



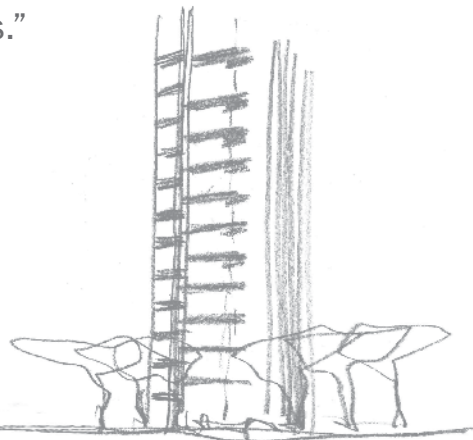


The Maestro

# *be/hind*

*The Masterpiece*

“At 3 Orchard By-The-Park, I have created a design experience that harmonises all the elements.”



*Antonio Citterio*

The Italian master, Antonio Citterio, an established architect and industrial designer, whose works has brilliantly stood the test of time and showcased in all corners of the globe, his worldwide success includes twenty 'Red dot' and 'Compasso d'Oro' awards. Now, his brilliance has been tapped to conceive a living work of art right in the heart of Orchard Road, 3 Orchard By-The-Park. The opportunity of a lifetime to own the work of a master recognised as the new standard of design excellence.

# A Partnership of Inspiring *Minds*



Tan Sri Francis Yeoh



Antonio Citterio

In YTL, design is much more than mere art form but also the subtle merging of great minds and innovative solutions to elevate the art of living every day. Individuality, of course, is paramount in the creation of a home and few developers consider this as carefully as Tan Sri Francis Yeoh does.

The Managing Director of YTL Corporation Berhad, Tan Sri Francis Yeoh took over the running of his family company in 1988 and grew it into a global infrastructure development conglomerate with core businesses in luxury property and hotel development, leisure travel, construction, power generation and utilities.

Ranked as one of “Asia’s 25 Most Powerful and Influential Personalities” by Fortune and Business Week, he advocates Godly stewardship of business. He is also on the Advisory Councils of London Business School, Wharton School and INSEAD. His numerous awards include the Commander of the Most Excellent Order of the British

Empire (CBE) by Her Majesty Queen Elizabeth II for his relentless support in environmental conservation and the Capri Legend Humanitarian Award for his philanthropic work in the arts.

Its property development arm, YTL Land & Development Berhad has built up an excellent award-winning portfolio of luxury projects that are “Designed by Masters, Built as Masterpieces”.





## A Landmark Above The Pulse Of A Global Metropolis

When location is everything, 3 Orchard By-The-Park puts you in the epicenter of cosmopolitan Singapore. Living within the ultra-luxury residential enclave that includes the prestigious Embassy Row, the prime address of District 10 is yours to call home. Just a mere few minutes stroll is the Orchard Boulevard MRT Station and the 82-hectare Singapore Botanic Gardens, a UNESCO World Heritage Site. With the city's luxury brand flagship stores, international hotels, medical centres, cafes and restaurants, and a botanic garden all within walking distance, the world does revolve around you.







Designed  
by Masters.  
Built as  
*Masterpieces.*



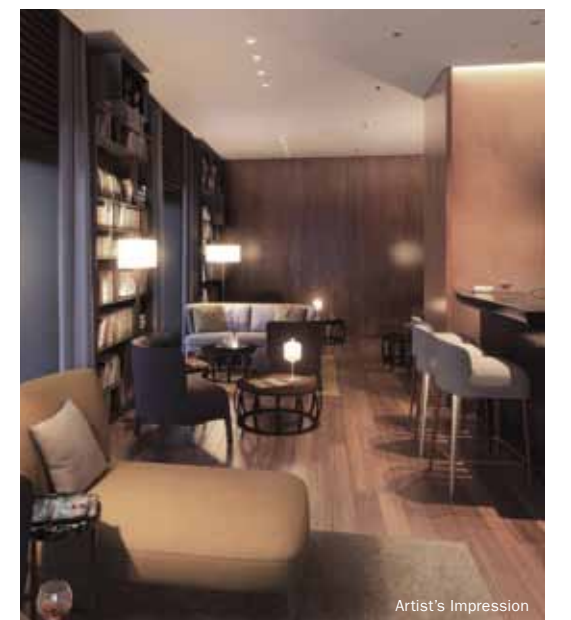


## The Best Comes As Standard

Imagine home is an Italian masterpiece, a bold sculptural statement by Antonio Citterio against a flourishing backdrop in the heart of Orchard Road. With only three 25-storey towers, 3 Orchard By-The-Park rises above the most celebrated shopping district. Like all avant-garde creations, they push the envelope of architectural design. The freehold development houses only 77 exclusive residences. The ultimate urban retreat set on a sprawling estate of lush greenery to dwell in intimacy.

A designer library lounge that combines relaxation with personal growth and is a reflection of Antonio Citterio's approach to elegance and style. Life at 3 Orchard By-The-Park is as much about the spaces and facilities outside your home as inside. Unified by Antonio Citterio's creative vision, living and communal spaces

connect seamlessly to timber-decked outdoor cabanas where lush landscaped environment rejuvenates body and mind. Nestled within one of the lower terraces, the outdoor lounge offers respite at day's end to wine and unwind. There's also an infinity edge pool that boasts an internal Jacuzzi to give those tired muscles a workout. Here, you'll appreciate a level of planning capturing the beauty of its surrounding – a world of picturesque calm that provides the perfect balm for all the senses.





# Stature In The Sky

# Every Inch A Masterpiece



This living work of art is a beacon to those seeking the pinnacle of design and craftsmanship. Each 'villa-in-the-sky' opens up to spectacular views of vibrant greenery and copious landscapes – wood, wilderness, parkland – to experience the cosmopolitan with a sense of calm. Antonio Citterio's masterpiece residences are characterised by interiors with generous

proportions and highly versatile layouts. Every step of each resident's journey, from the lobby to their own residences, is meticulously choreographed to achieve the most welcoming and gracious flow.



The signature touch of Antonio Citterio is everywhere. The elegance and simplicity of every creation belies the strength of its functionality. Rigorous selection of superior materials and premium fittings deliver quality and durability. Even the cabinetry and luxury kitchen timber boiserie panels are exquisitely handcrafted to bear the mark of excellence that can never be replicated.



# Site Plan

# Schematic Chart



- A Arrival Plaza
- B Orchid Garden
- C Management Office / Concierge
- D Library Lounge
- E Library Terrace
- F Gourmet Dining
- G Private Dining
- H Outdoor Terrace
- I Gym / Changing Room
- J Swimming Pool
- K Water Lounging Deck
- L Jacuzzi
- M Kid's Pool
- N Pavilion
- O Alfresco Dining
- P Poolside Kitchen
- Q Boardwalk
- R Relaxation Corner
- S Guard House
- T Entrance 1
- U Entrance 2

LOWER ROOF	Jacuzzi & Roof Terrace PH-AC (#25-01)		M&E Services B <sub>2</sub> -C (#25-02)		Pool & Roof Terrace PH-AB (#25-03)	LOWER ROOF
25th Storey		Pool + Balcony		Balcony		25th Storey
24th Storey	B <sub>1</sub> -a <sub>5</sub> (#23-01)		B <sub>2</sub> -a <sub>3</sub> (#24-02)	Balcony + Garden		24th Storey
23rd Storey	Balcony	C <sub>1</sub> -C <sub>4</sub> (#22-01)	B <sub>2</sub> -b <sub>3</sub> (#23-02)	Balcony	C <sub>2</sub> -b <sub>2</sub> (#23-03)	23rd Storey
22nd Storey	B <sub>1</sub> -a <sub>5</sub> (#21-01)	Pool + Balcony	B <sub>2</sub> -a <sub>3</sub> (#22-02)	Balcony + Garden	C <sub>2</sub> -b <sub>2</sub> (#22-03)	22nd Storey
21st Storey	Balcony	C <sub>1</sub> -C <sub>3</sub> (#20-01)	B <sub>2</sub> -b <sub>3</sub> (#21-02)	Balcony	C <sub>2</sub> -b <sub>2</sub> (#21-03)	21st Storey
20th Storey	B <sub>1</sub> -a <sub>5</sub> (#19-01)	Pool + Balcony	B <sub>2</sub> -a <sub>3</sub> (#20-02)	Balcony + Garden	C <sub>2</sub> -b <sub>2</sub> (#20-03)	20th Storey
19th Storey	Balcony	C <sub>1</sub> -C <sub>2</sub> (#18-01)	B <sub>2</sub> -b <sub>3</sub> (#19-02)	Balcony	C <sub>2</sub> -b <sub>2</sub> (#19-03)	19th Storey
18th Storey	B <sub>1</sub> -a <sub>4</sub> (#17-01)	Pool + Balcony	B <sub>2</sub> -a <sub>2</sub> (#18-02)	Balcony + Garden	C <sub>2</sub> -b <sub>1</sub> (#18-03)	18th Storey
17th Storey	Balcony	C <sub>1</sub> -C <sub>1</sub> (#16-01)	B <sub>2</sub> -b <sub>2</sub> (#17-02)	Balcony	C <sub>2</sub> -b <sub>1</sub> (#17-03)	17th Storey
16th Storey	B <sub>1</sub> -a <sub>4</sub> (#15-01)	Pool + Balcony	B <sub>2</sub> -a <sub>2</sub> (#16-02)	Balcony + Garden	C <sub>2</sub> -b <sub>1</sub> (#16-03)	16th Storey
15th Storey	Balcony	C <sub>1</sub> -b <sub>4</sub> (#14-01)	B <sub>2</sub> -b <sub>2</sub> (#15-02)	Balcony	C <sub>2</sub> -b <sub>1</sub> (#15-03)	15th Storey
14th Storey	B <sub>1</sub> -a <sub>3</sub> (#13-01)	Balcony	B <sub>2</sub> -a <sub>2</sub> (#14-02)	Balcony + Garden	C <sub>2</sub> -b <sub>1</sub> (#14-03)	14th Storey
13th Storey	Balcony	C <sub>1</sub> -b <sub>3</sub> (#12-01)	B <sub>2</sub> -b <sub>2</sub> (#13-02)	Balcony	C <sub>2</sub> -b <sub>1</sub> (#13-03)	13th Storey
12th Storey	B <sub>1</sub> -a <sub>3</sub> (#11-01)	Balcony	B <sub>2</sub> -a <sub>2</sub> (#12-02)	Balcony + Garden	C <sub>2</sub> -b <sub>1</sub> (#12-03)	12th Storey
11th Storey	Balcony	C <sub>1</sub> -b <sub>3</sub> (#10-01)	B <sub>2</sub> -b <sub>2</sub> (#11-02)	Balcony	C <sub>2</sub> -b <sub>1</sub> (#11-03)	11th Storey
10th Storey	B <sub>1</sub> -a <sub>2</sub> (#09-01)	Balcony	B <sub>2</sub> -a <sub>2</sub> (#10-02)	Balcony + Garden	C <sub>2</sub> -b <sub>1</sub> (#10-03)	10th Storey
9th Storey	Balcony	C <sub>1</sub> -b <sub>2</sub> (#08-01)	B <sub>2</sub> -b <sub>2</sub> (#09-02)	Balcony	C <sub>2</sub> -a (#09-03)	9th Storey
8th Storey	B <sub>1</sub> -a <sub>1</sub> (#07-01)	Balcony	B <sub>2</sub> -a <sub>1</sub> (#08-02)	Balcony + Garden	A <sub>1</sub> (#08-04)   A <sub>2</sub> -c (#08-03)	8th Storey
7th Storey	Balcony	C <sub>1</sub> -b <sub>1</sub> (#06-01)	B <sub>2</sub> -b <sub>1</sub> (#07-02)	Balcony	A <sub>1</sub> (#07-04)   A <sub>2</sub> -b (#07-03)	7th Storey
6th Storey	B <sub>1</sub> -a <sub>1</sub> (#05-01)	Balcony	B <sub>2</sub> -a <sub>1</sub> (#06-02)	Balcony + Garden	A <sub>1</sub> (#06-04)   A <sub>2</sub> -c (#06-03)	6th Storey
5th Storey	Balcony	C <sub>1</sub> -b <sub>1</sub> (#04-01)	B <sub>2</sub> -b <sub>1</sub> (#05-02)	Balcony	A <sub>1</sub> (#05-04)   A <sub>2</sub> -b (#05-03)	5th Storey
4th Storey	B <sub>1</sub> -a <sub>1</sub> (#03-01)	Balcony	B <sub>1</sub> -a <sub>1</sub> (#04-02)	Balcony + Garden	A <sub>1</sub> (#04-04)   A <sub>2</sub> -c (#04-03)	4th Storey
3rd Storey		C <sub>1</sub> -a (#02-01)	(Void)		A <sub>1</sub> (#03-04)   A <sub>2</sub> -b (#03-03)	3rd Storey
2nd Storey		G <sub>1</sub> (#01-01)	G <sub>2</sub> (#01-02)	Pool	A <sub>1</sub> (#02-04)   A <sub>2</sub> -a (#02-03)	2nd Storey
1st Storey					Library Lounge	1st Storey

WATER TOWER

WILDERNESS TOWER

WOOD TOWER





# A Cultivated Air



Discover a haven of botanical vibrancy at the Wilderness Tower zone. A rich and evolving tapestry of pathways, vistas and enclosures in a landscaped environment of manicured greenery and watery cascades. Here, two rare and exquisite Vanda orchids named 'Vanda YTL' and 'Vanda Andrea Bocelli', presented by the Singapore Botanic Gardens in honour of YTL's outstanding contribution, thrive lushly in enchantment. Find your breathing space in a secret garden that truly captures the prestige of a home in a botanical garden.



# WILDERNESS

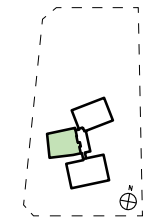
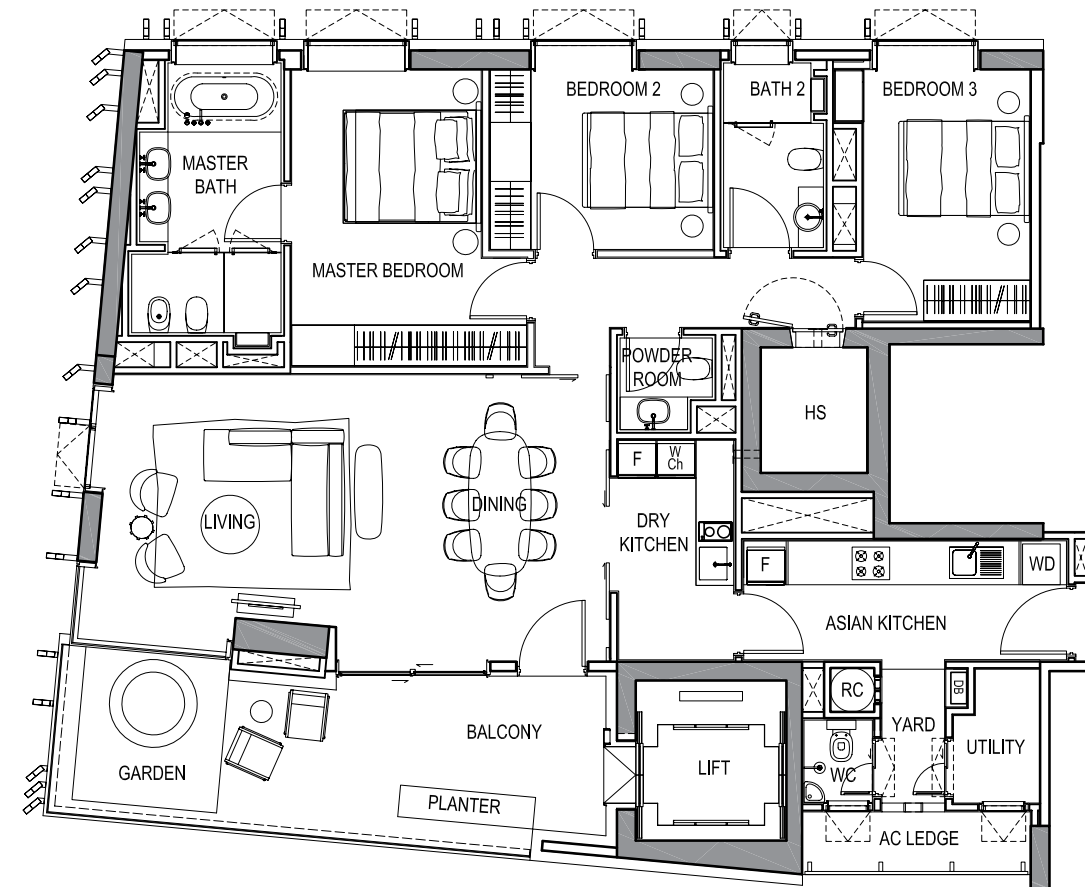
Your entrance is a private lift lobby that opens out into a manicured landscaped terrace. Yield yourself to nature's caress. Here the levels of the residences become viewing platforms to panoramas of verdant trees rising above a colourful array of flowering plants. Bathed in natural light, the living and dining areas flow with a heightened feeling of space. The Wilderness Tower defines new standards of extraordinary living.

## 3-Bedroom

### Type B2-a1 (Garden)

Area: 173 sq m / 1,862 sq ft

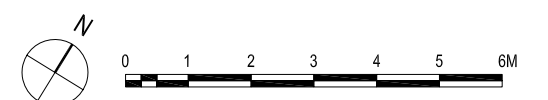
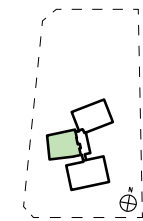
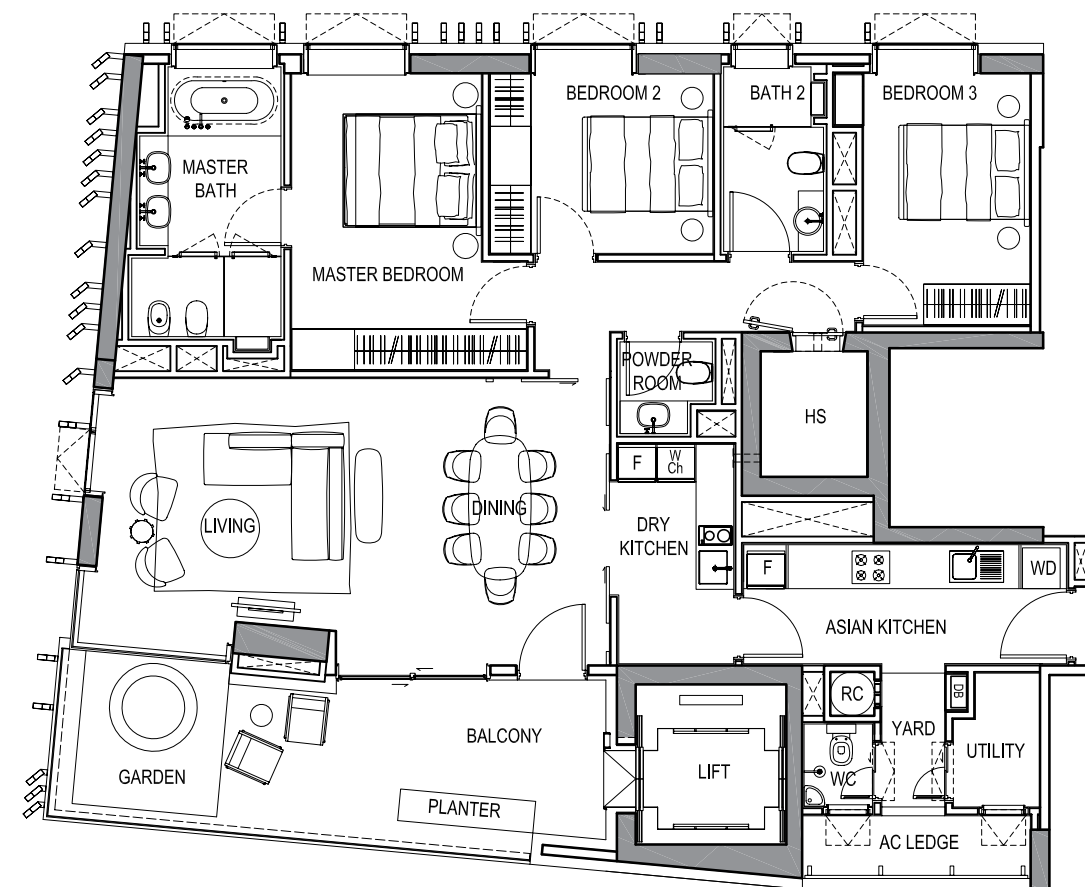
#04-02, #06-02, #08-02



### Type B2-a2 (Garden)

Area: 173 sq m / 1,862 sq ft

#10-02, #12-02, #14-02  
#16-02, #18-02



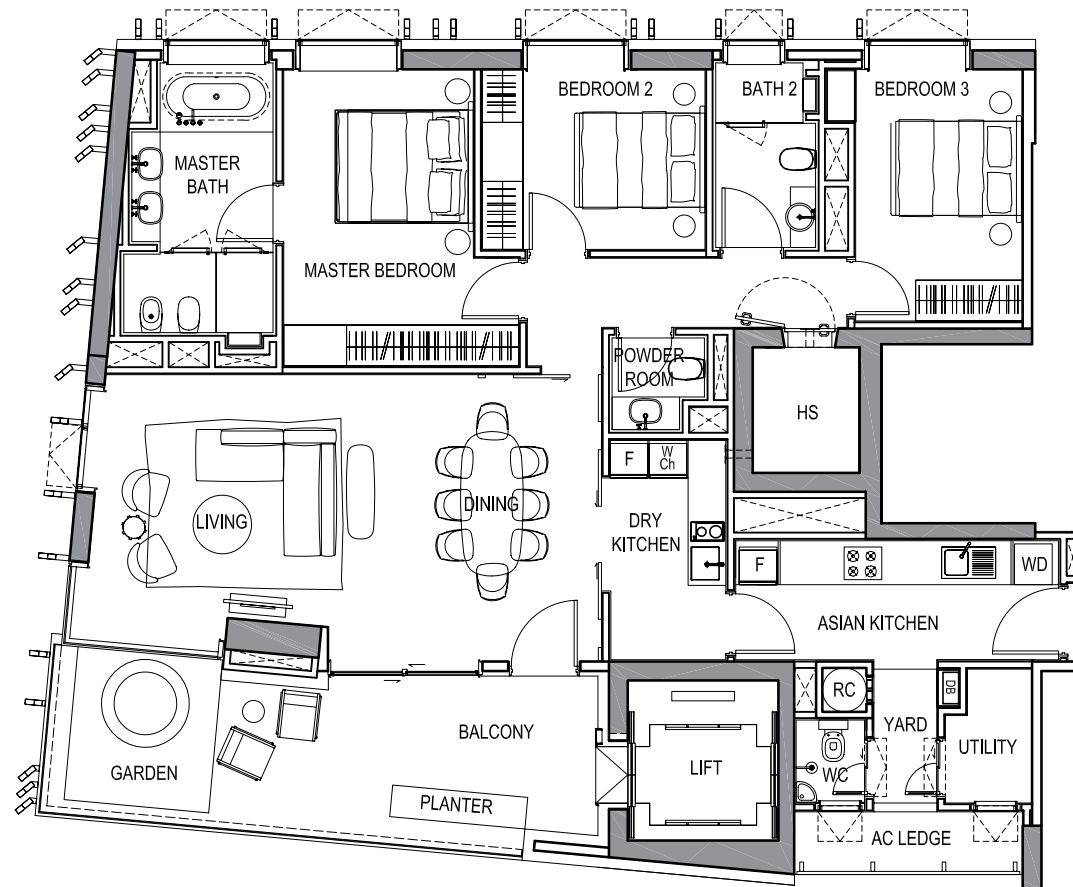
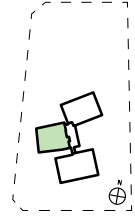


# 3-Bedroom

## Type B2-a3 (Garden)

Area: 173 sq m / 1,862 sq ft

#20-02, #22-02, #24-02



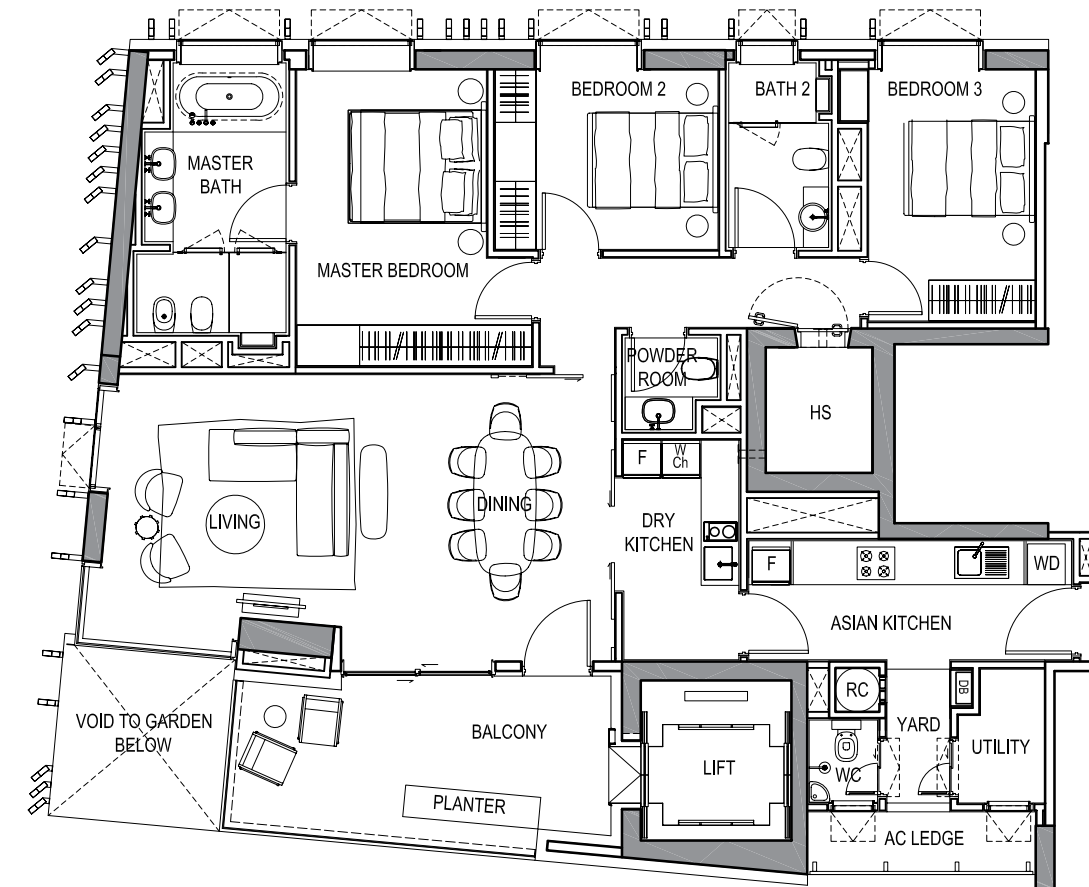
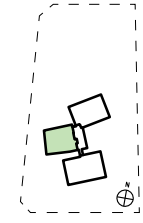
# 3-Bedroom

## Type B2-b2 (Balcony)

165 sq m / 1,776 sq ft

#09-02, #11-02, #13-02,

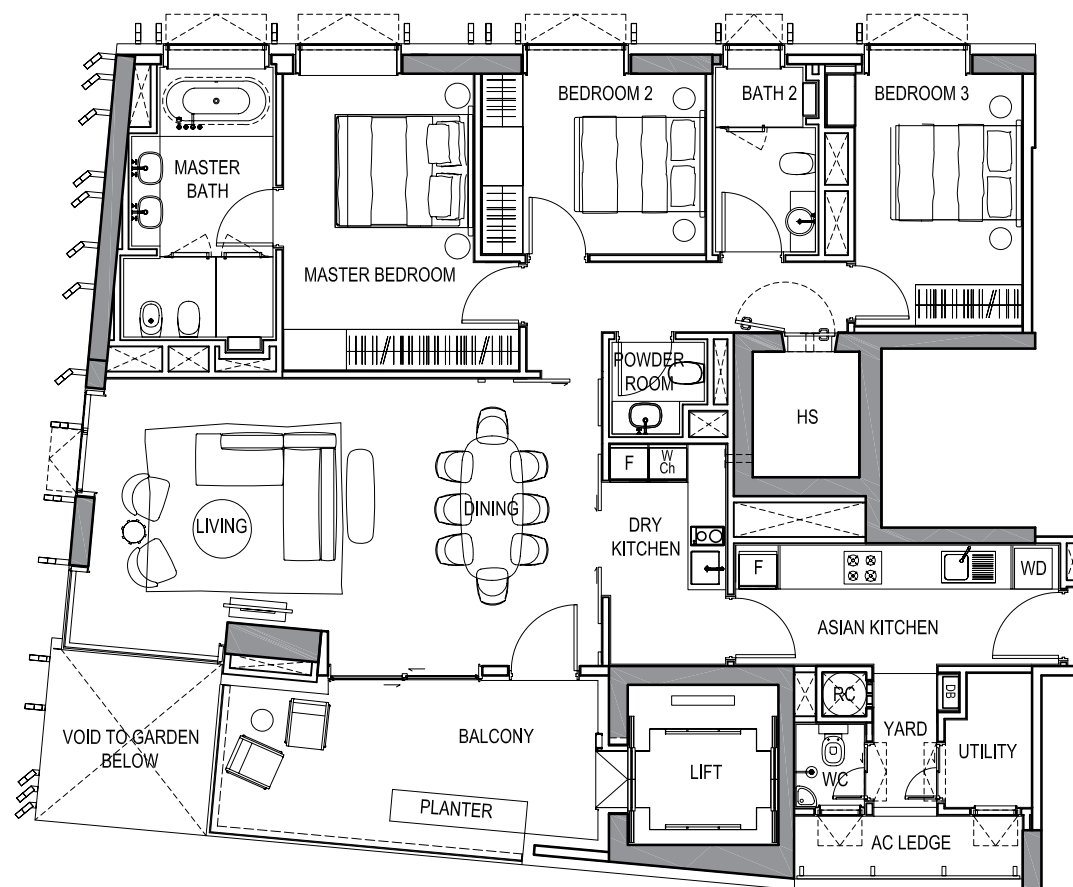
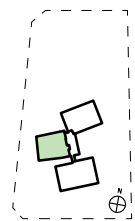
#15-02, #17-02



## Type B2-b1 (Balcony)

Area: 165 sq m / 1,776 sq ft

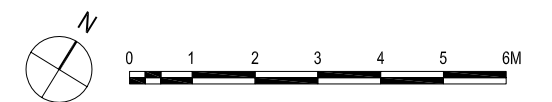
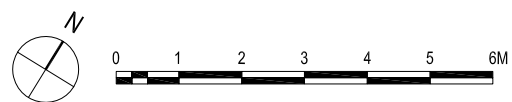
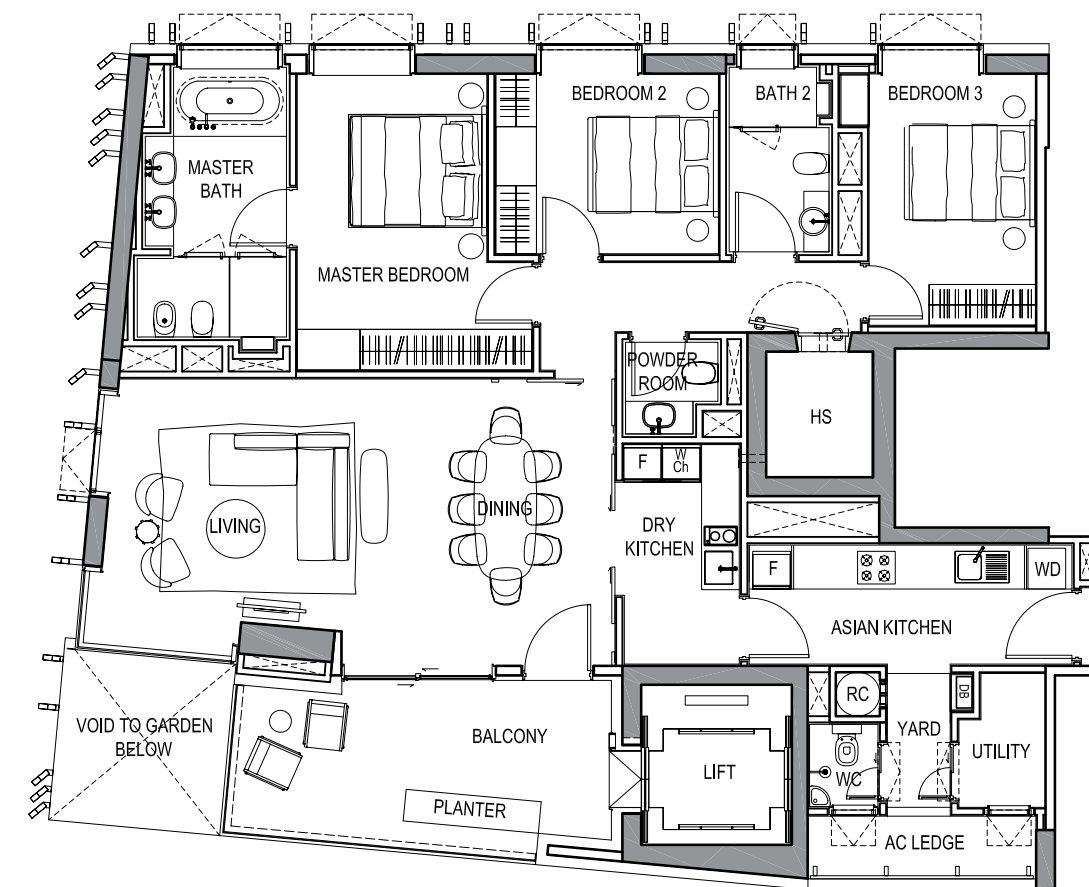
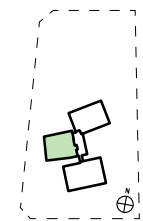
#05-02, #07-02



## Type B2-b3 (Balcony)

165 sq m / 1,776 sq ft

#19-02, #21-02, #23-02





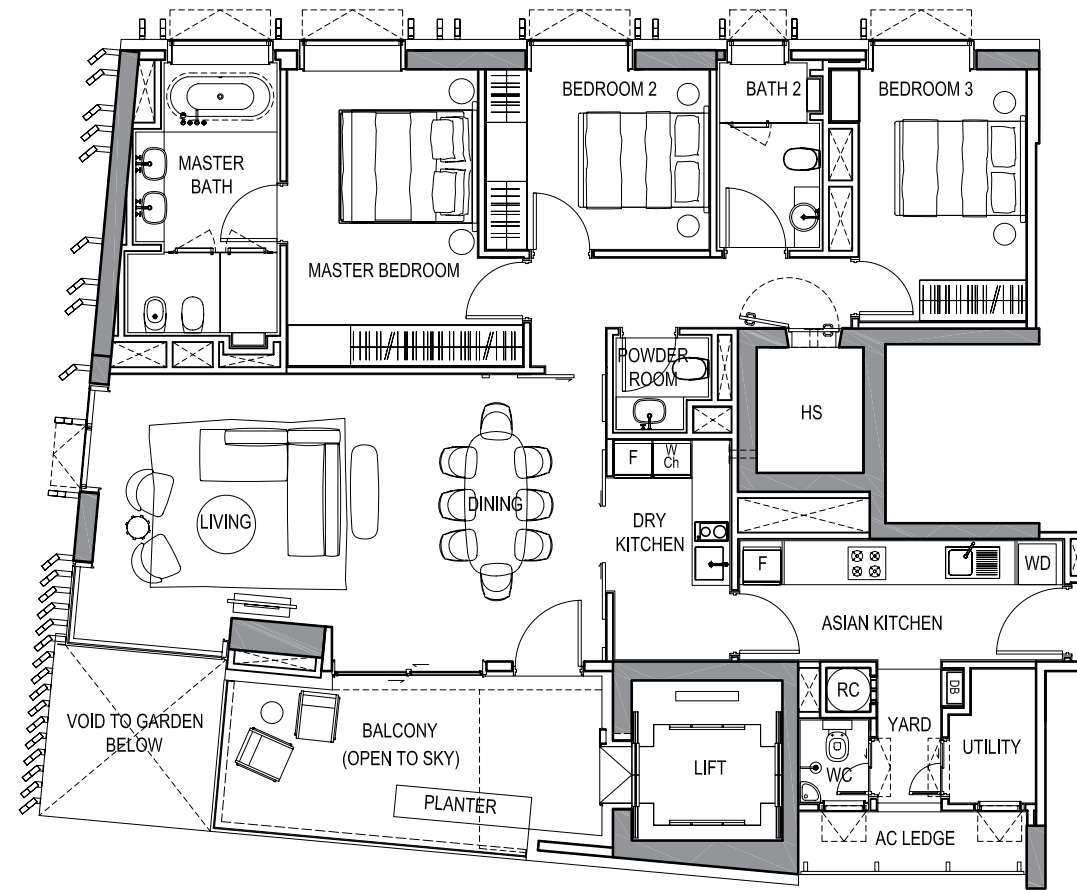
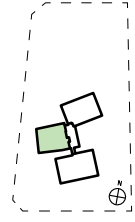
# 3-Bedroom

# Garden Suites

## Type B2-c (Balcony)

Area: 165 sq m / 1,776 sq ft

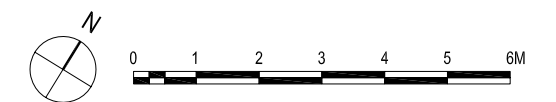
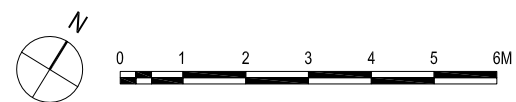
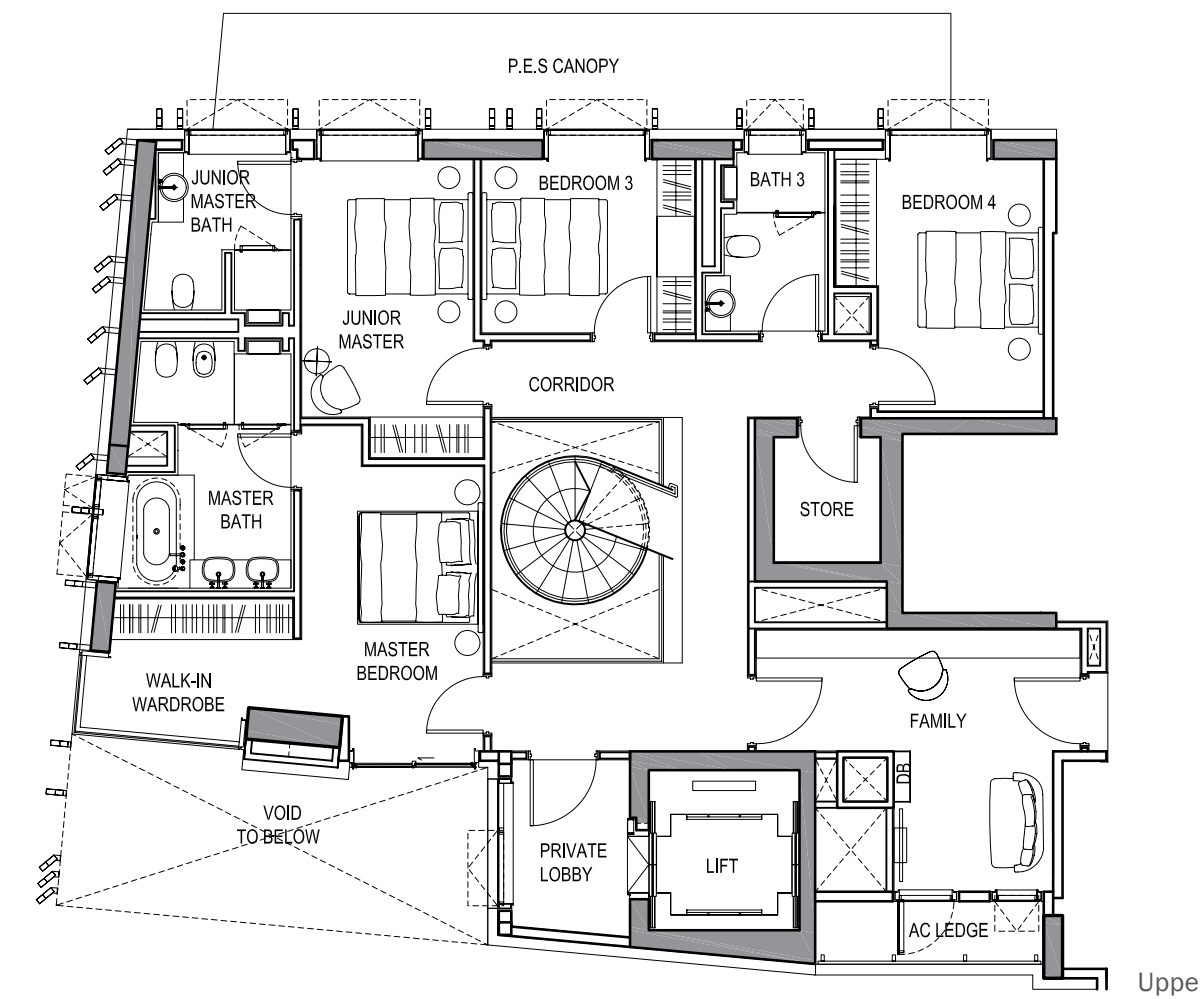
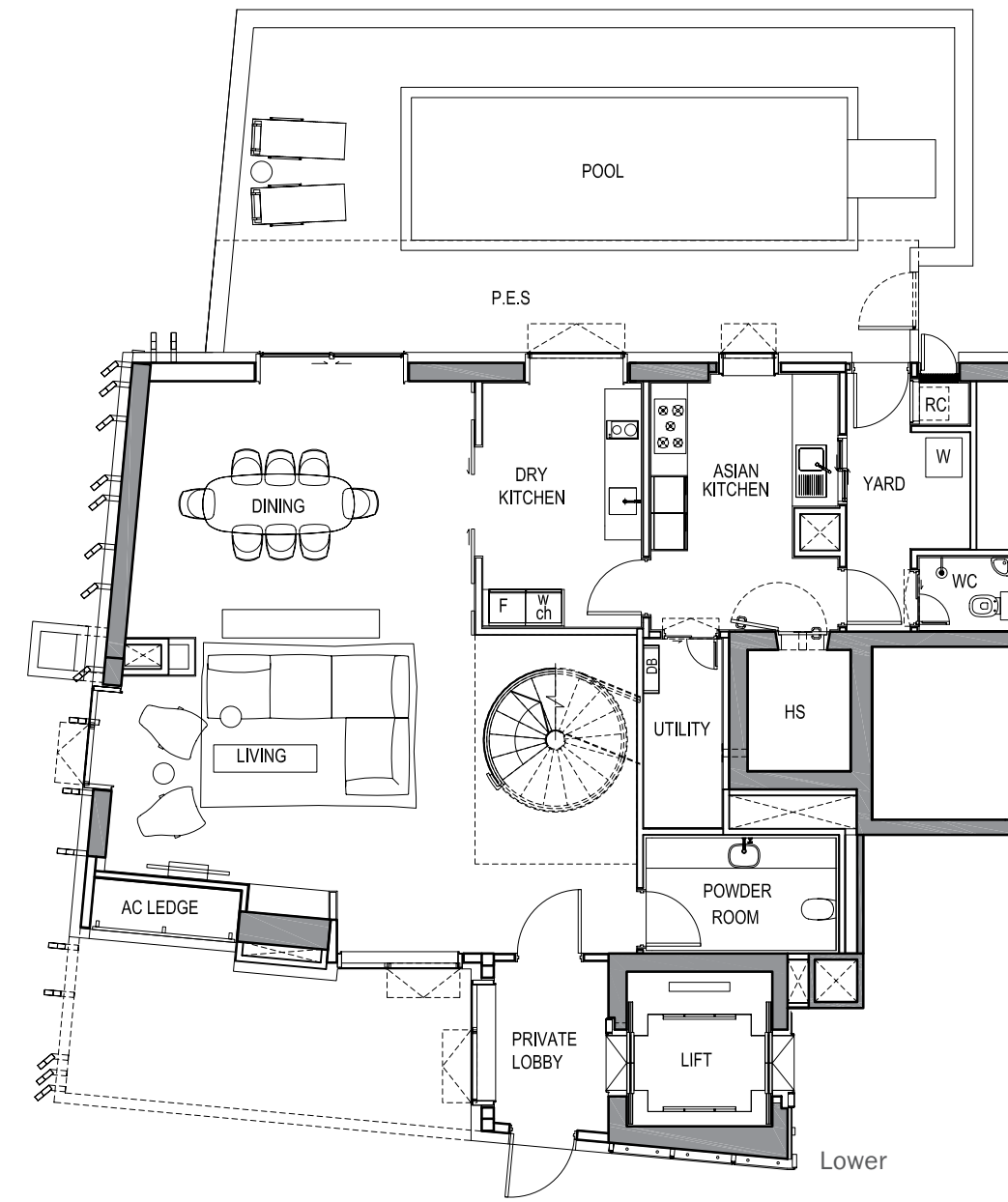
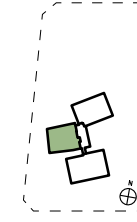
#25-02



## Type G2

Area: 353 sq m / 3,800 sq ft

#01-02

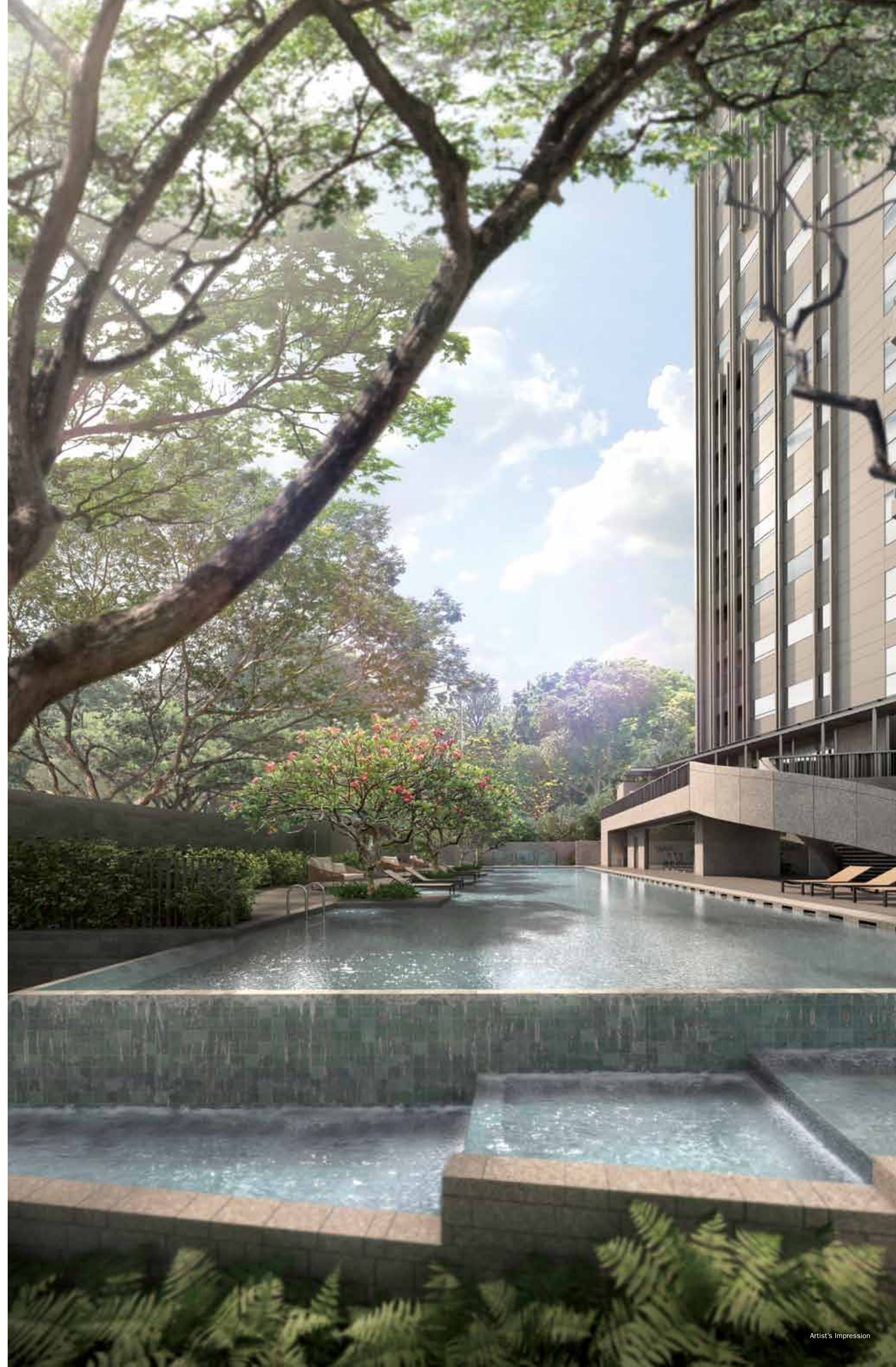




# Immerse In Pure Luxury



For the select few with the most discerning of tastes, luxuriate in the Water Tower's hallmark double volume living space, where you may experience the duality of loft living. Intimate and stylish, the upper and lower levels of the interior are separated by a sculptural winding staircase, which is no doubt the greatest work of art, to add an artistic note to the space. In selected units, the luxury of having a private pool within significantly raises the bar for bespoke living.



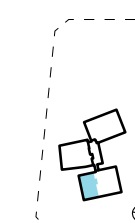
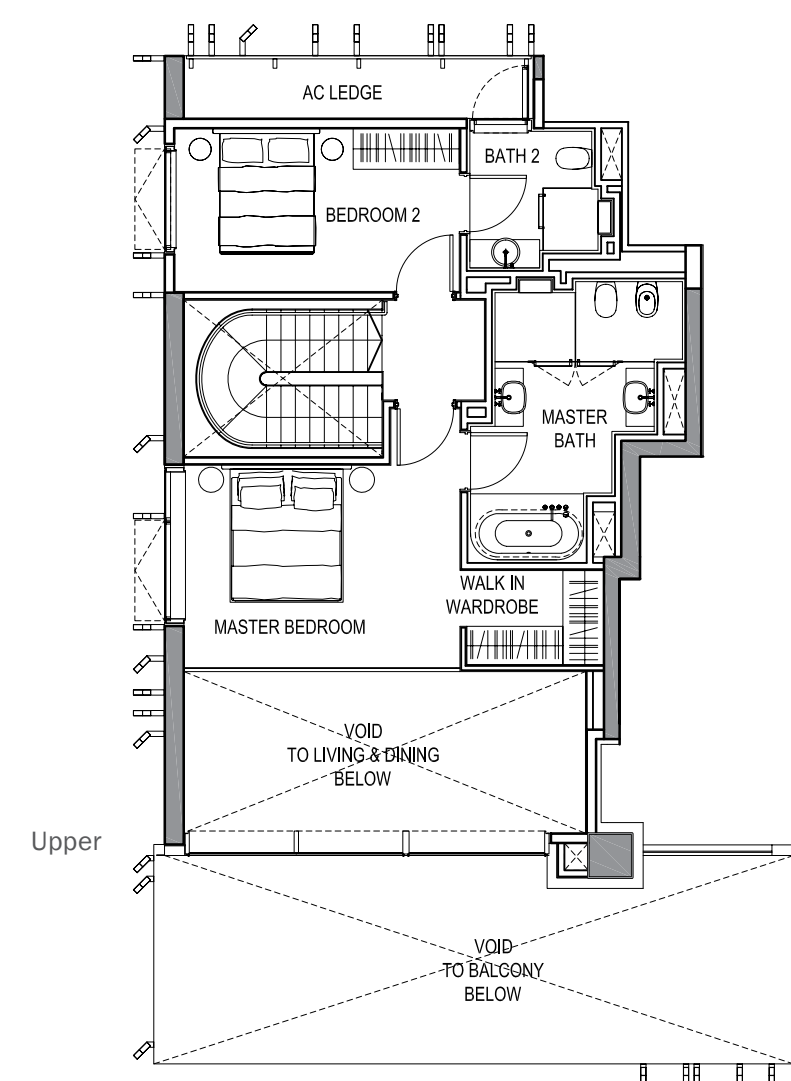
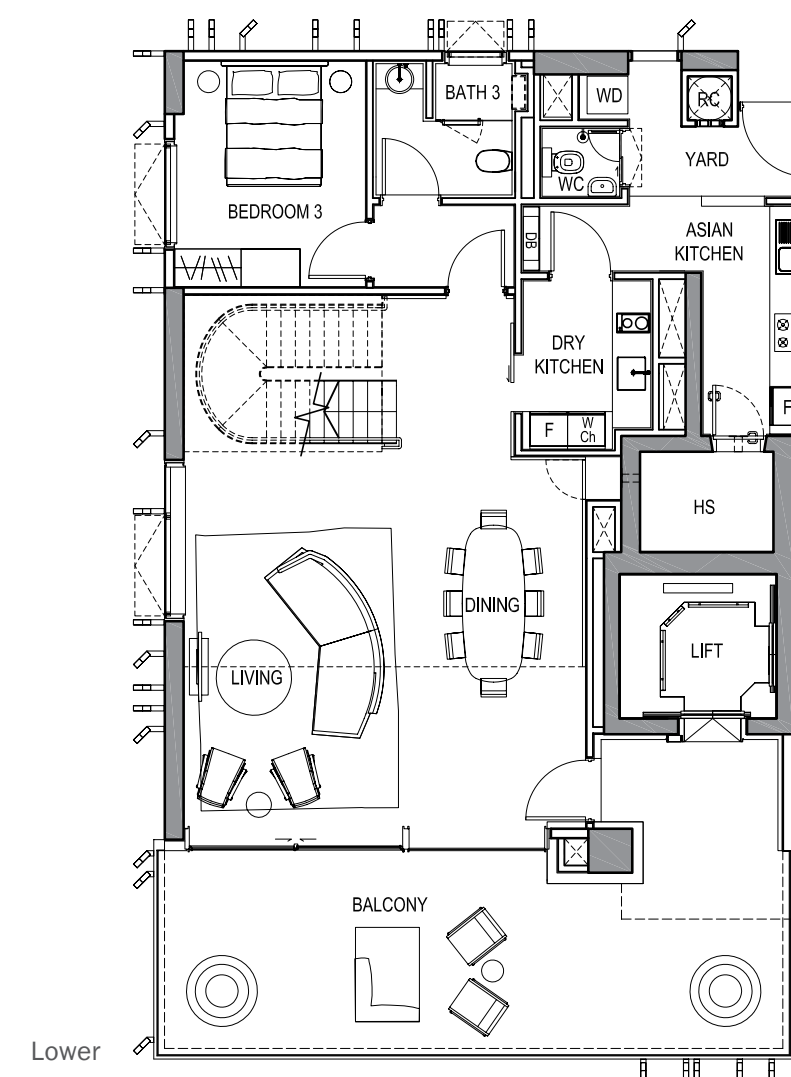
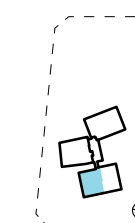


# 3-Bedroom

## Type B1-a1 (Loft)

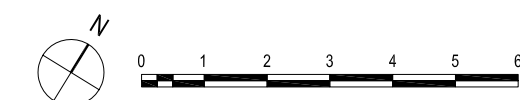
Area: 240 sq m / 2,583 sq ft

#03-01, #05-01, #07-01



## WATER

Thoughtfully worked into the design of the Water Tower are two distinctive water features, along the driveway and at the sculpted entrance courtyard. Adding a splash of magnificence are plants sculpted into wavy patterns to create a unique relationship with the environment. Fluid, flowing, it rejuvenates and renews your spirit. The Water Tower houses double-volume units that elevate functional living space into grand and elegant oasis.



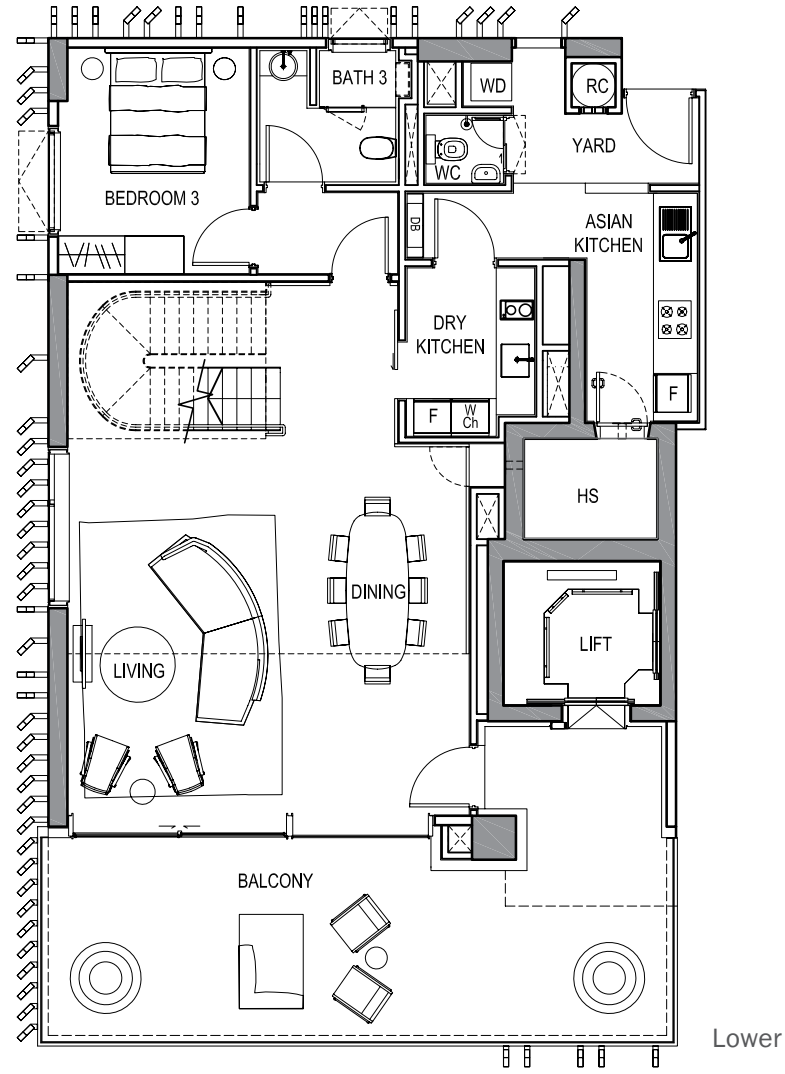
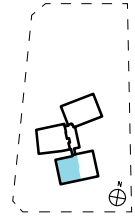


# 3-Bedroom

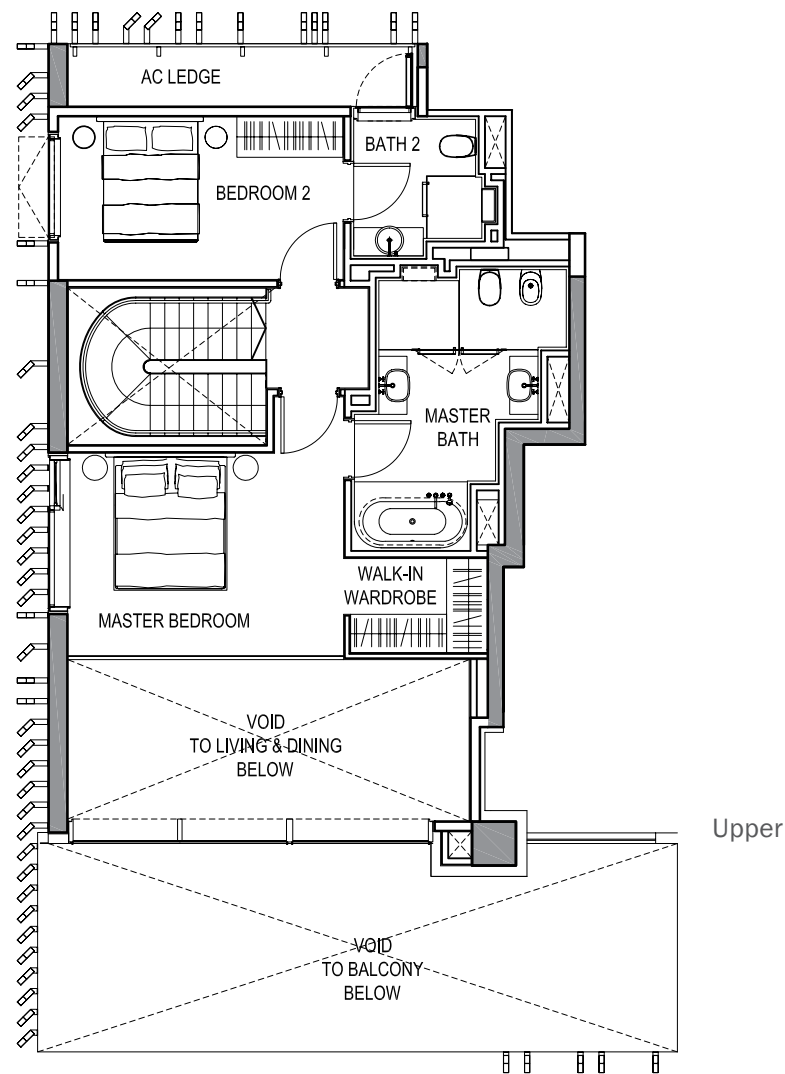
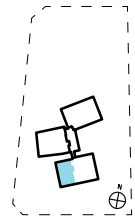
## Type B1-a2

Area: 240 sq m / 2,583 sq ft

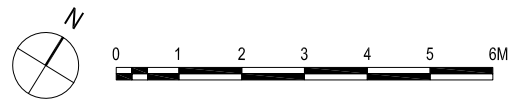
#09-01



Lower



Upper

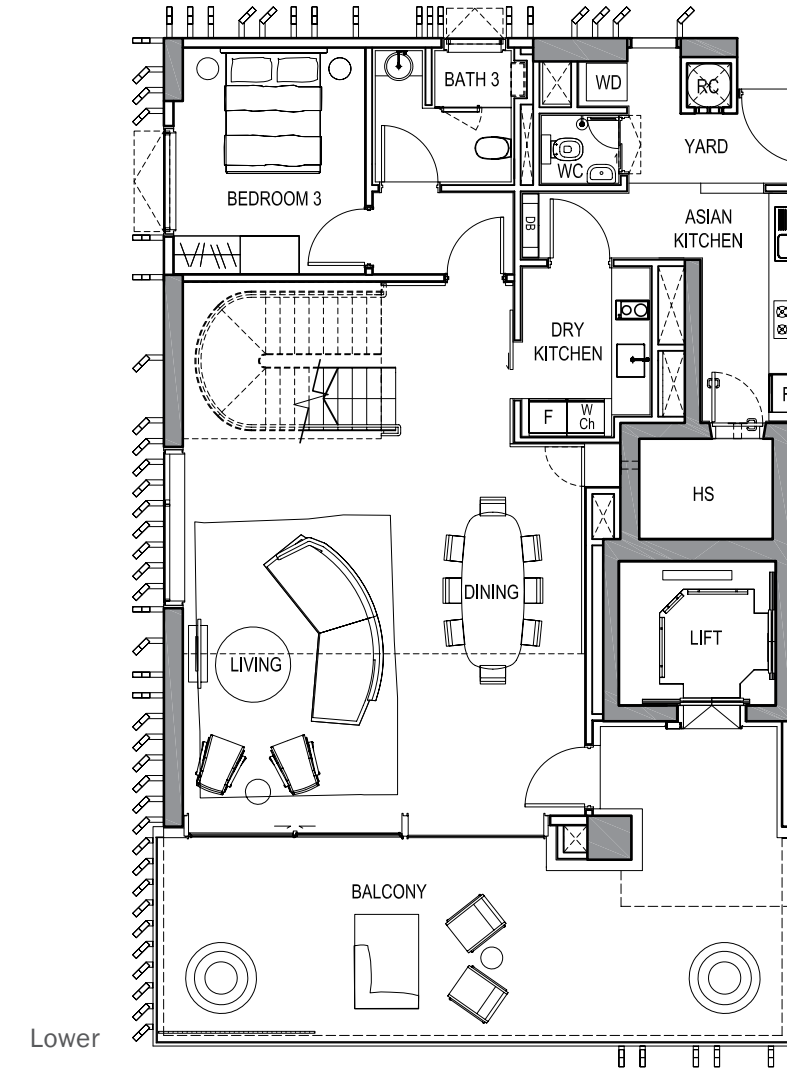
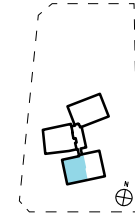


# 3-Bedroom

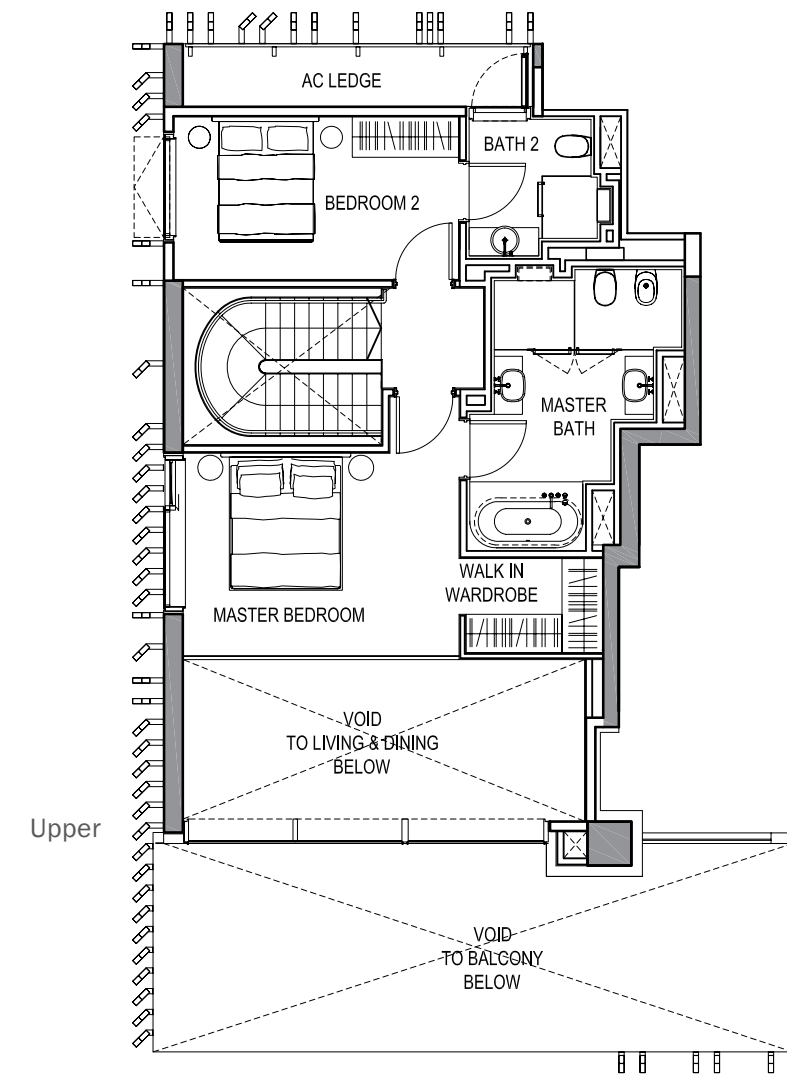
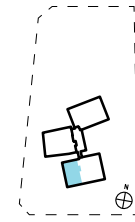
## Type B1-a3

Area: 240 sq m / 2,583 sq ft

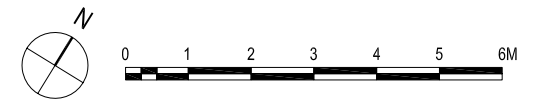
#11-01, #13-01



Lower



Upper



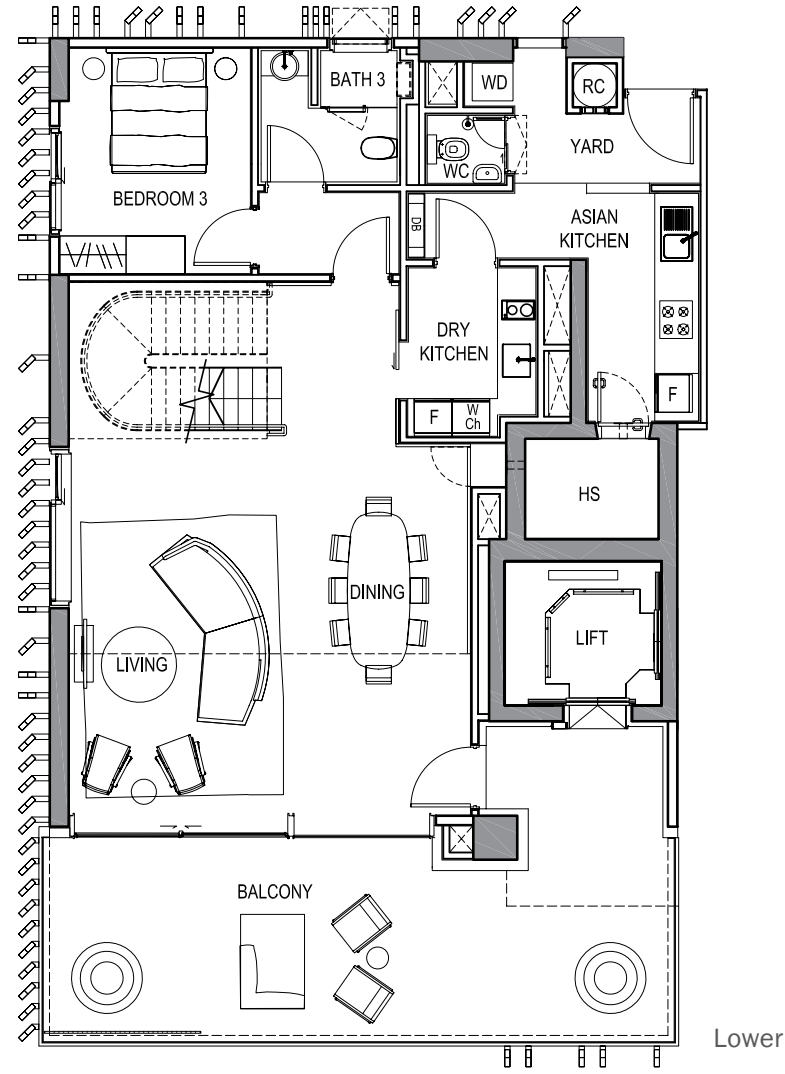
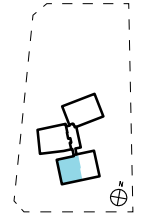


# 3-Bedroom

## Type B1-a4

Area: 240 sq m / 2,583 sq ft

#15-01, #17-01

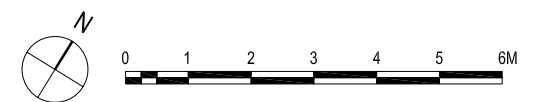
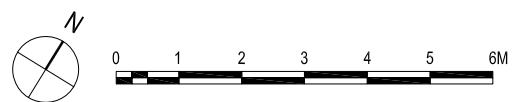
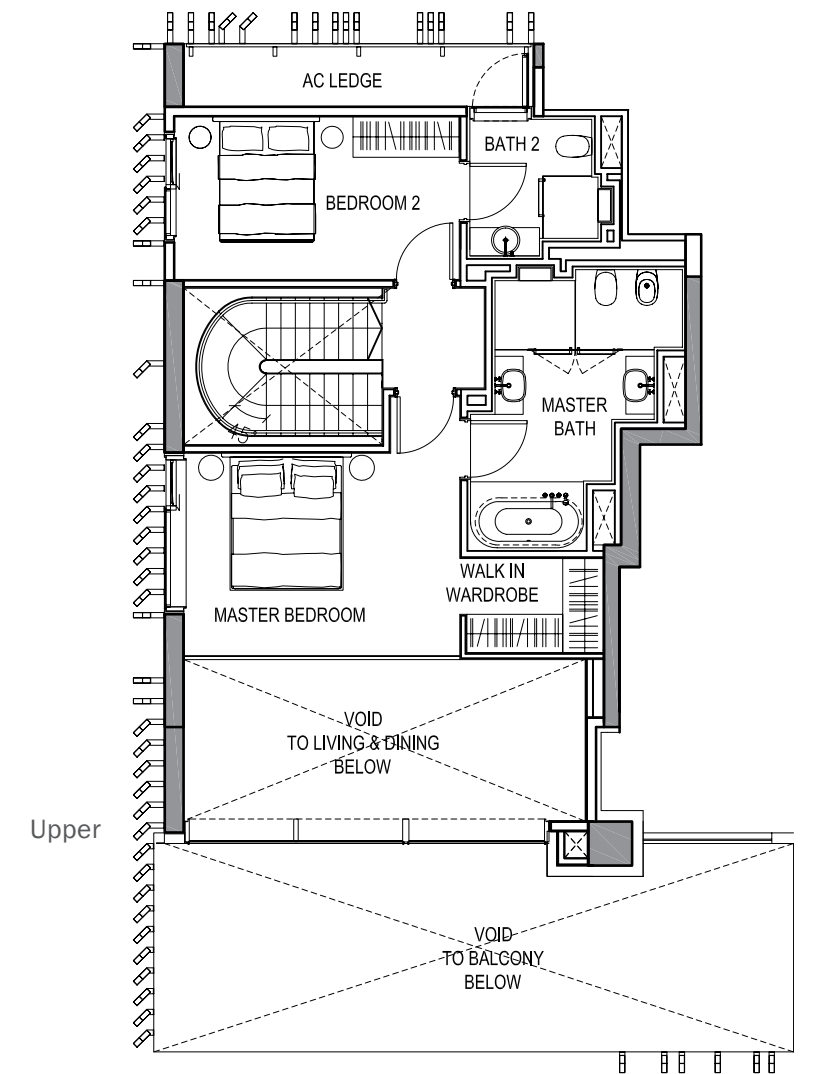
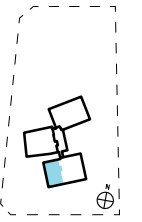
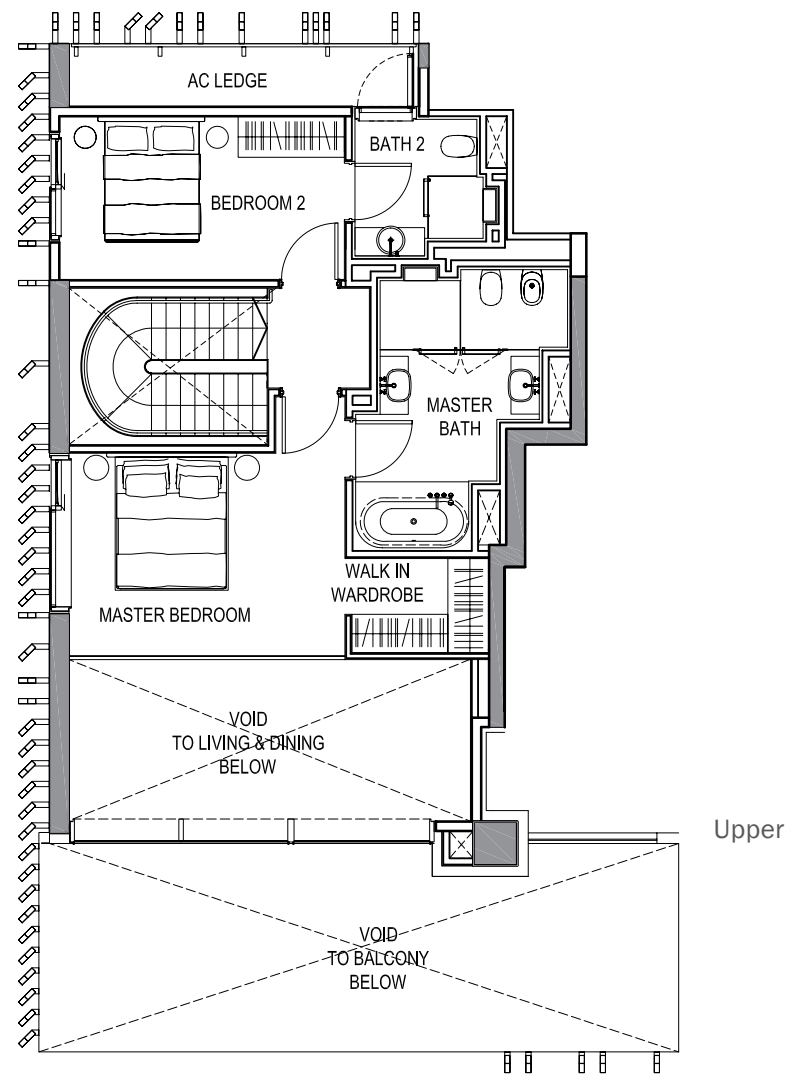
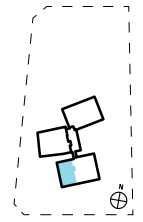
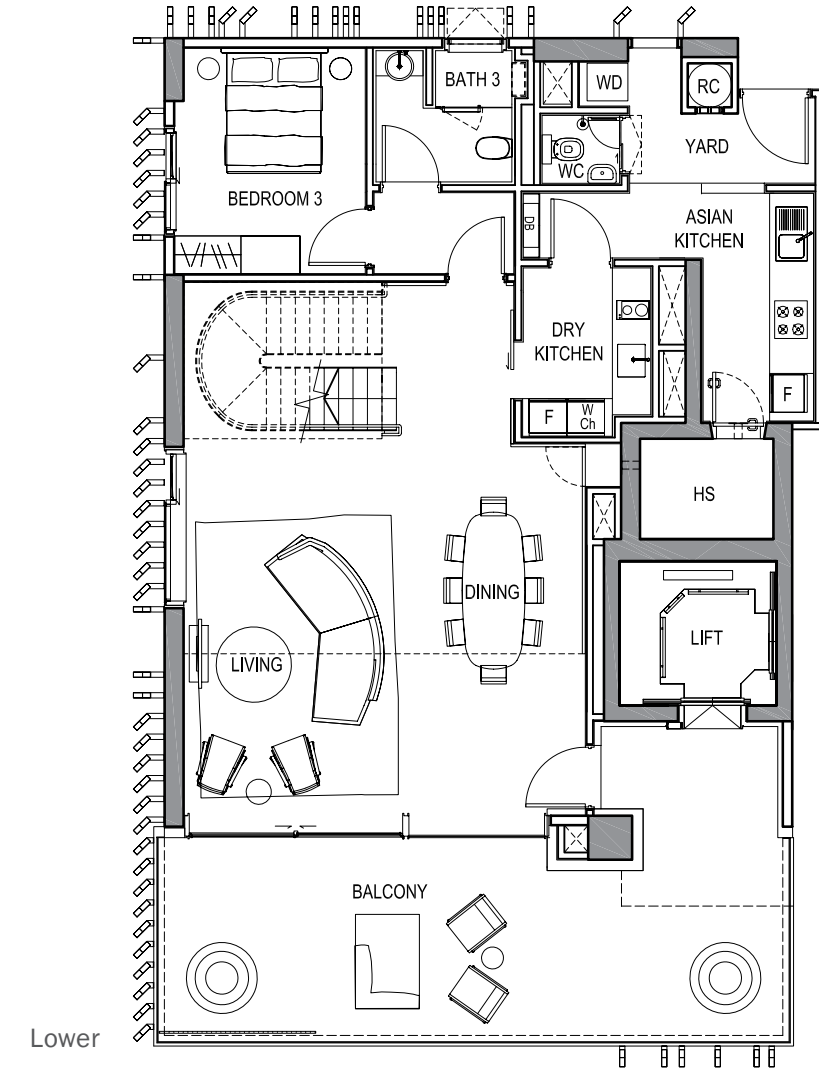
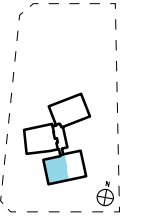


# 3-Bedroom

## Type B1-a5

Area: 240 sq m / 2,583 sq ft

#19-01, #21-01, #23-01



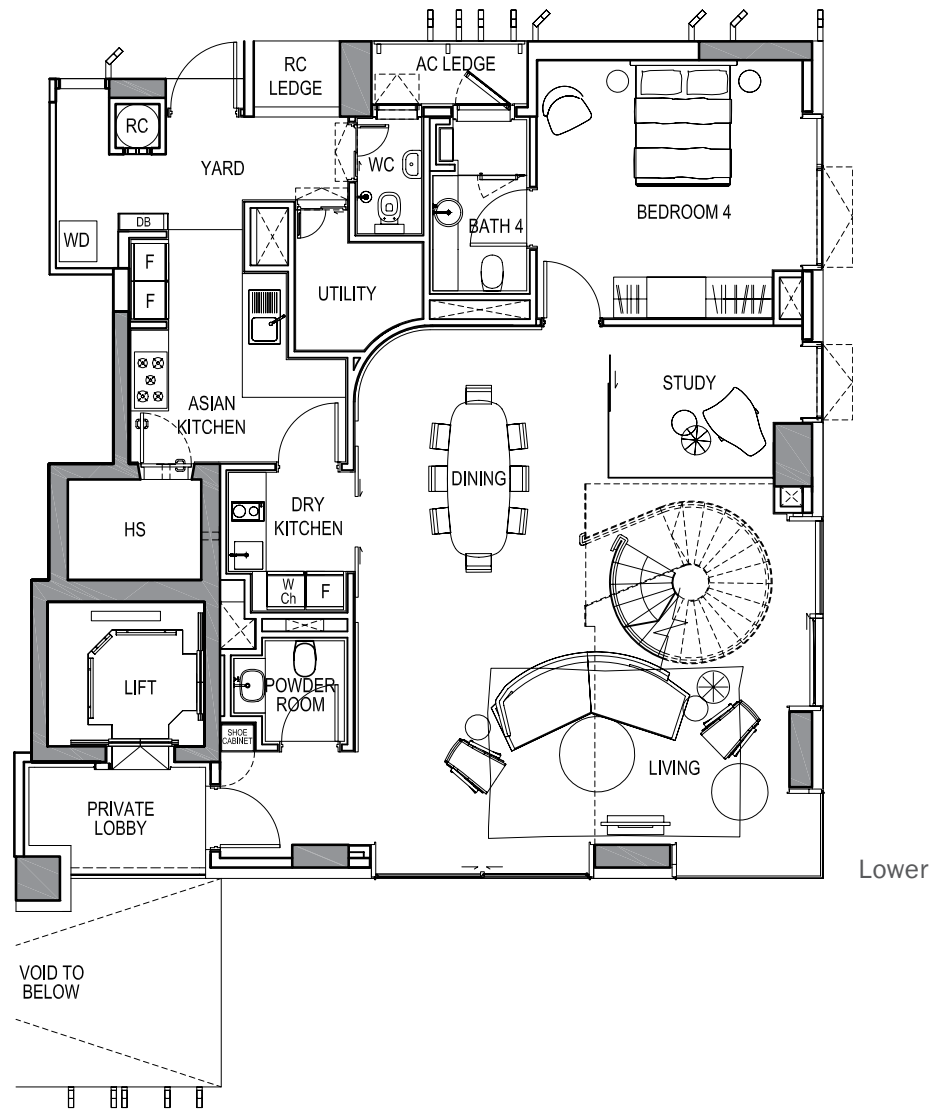
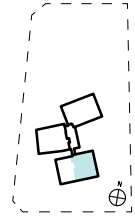


# 4-Bedroom

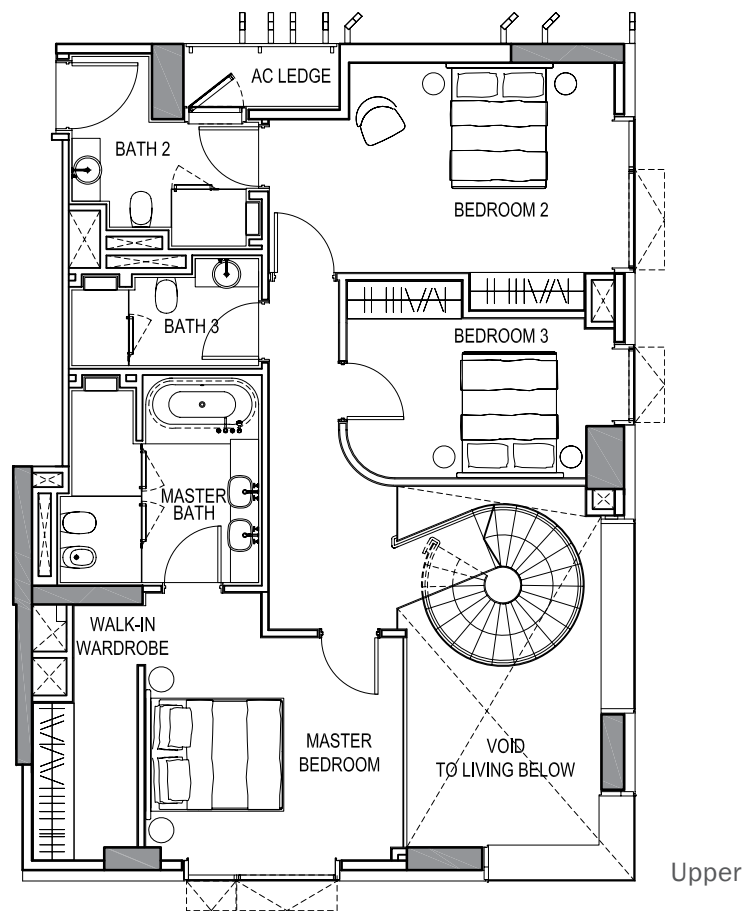
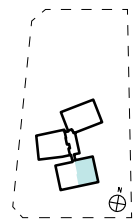
## Type C1-a

Area: 263 sq m / 2,831 sq ft

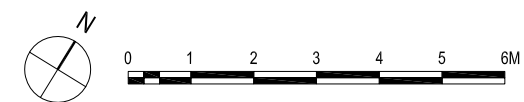
#02-01



Lower



Upper

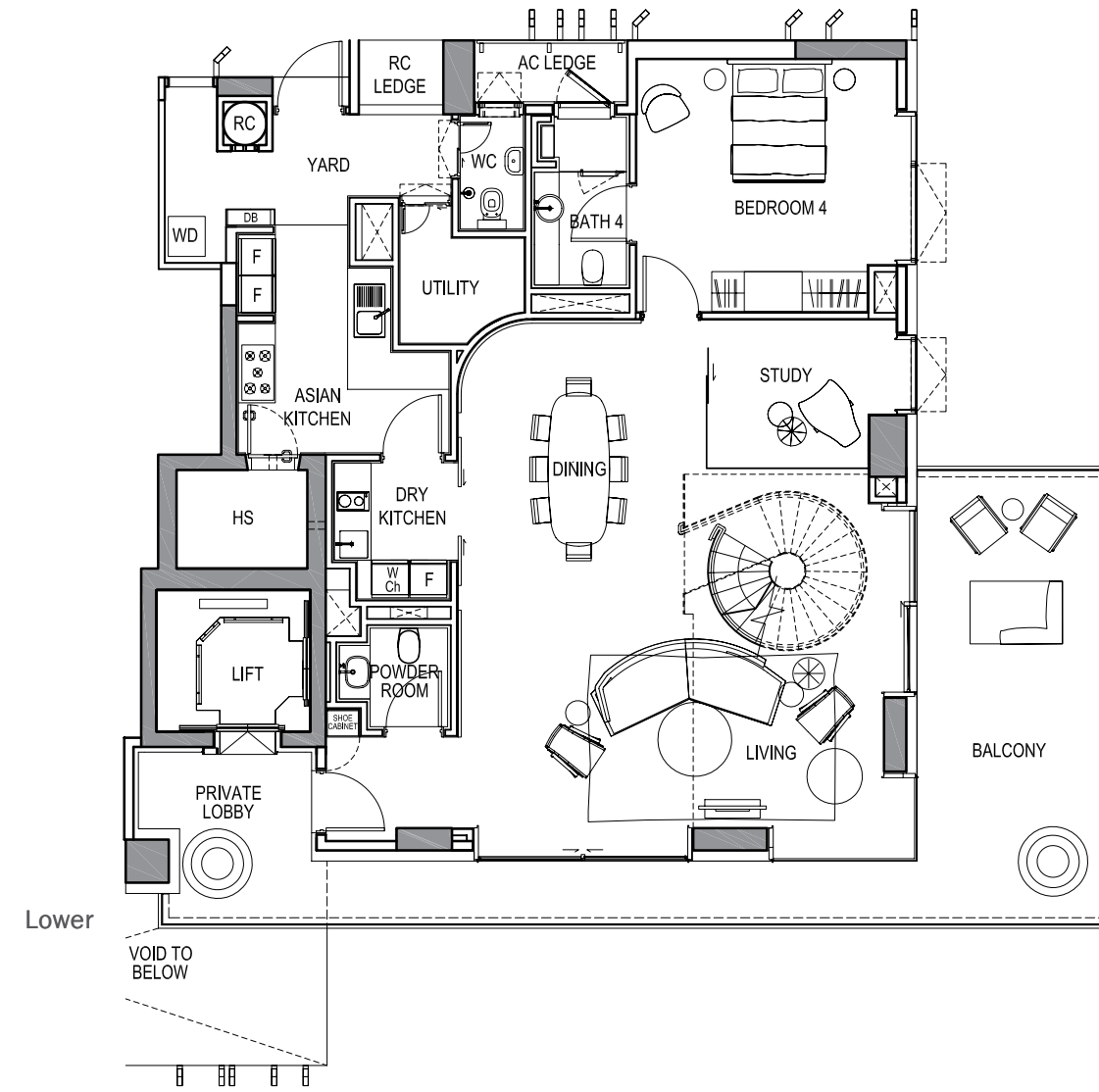
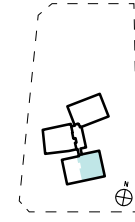


# 4-Bedroom

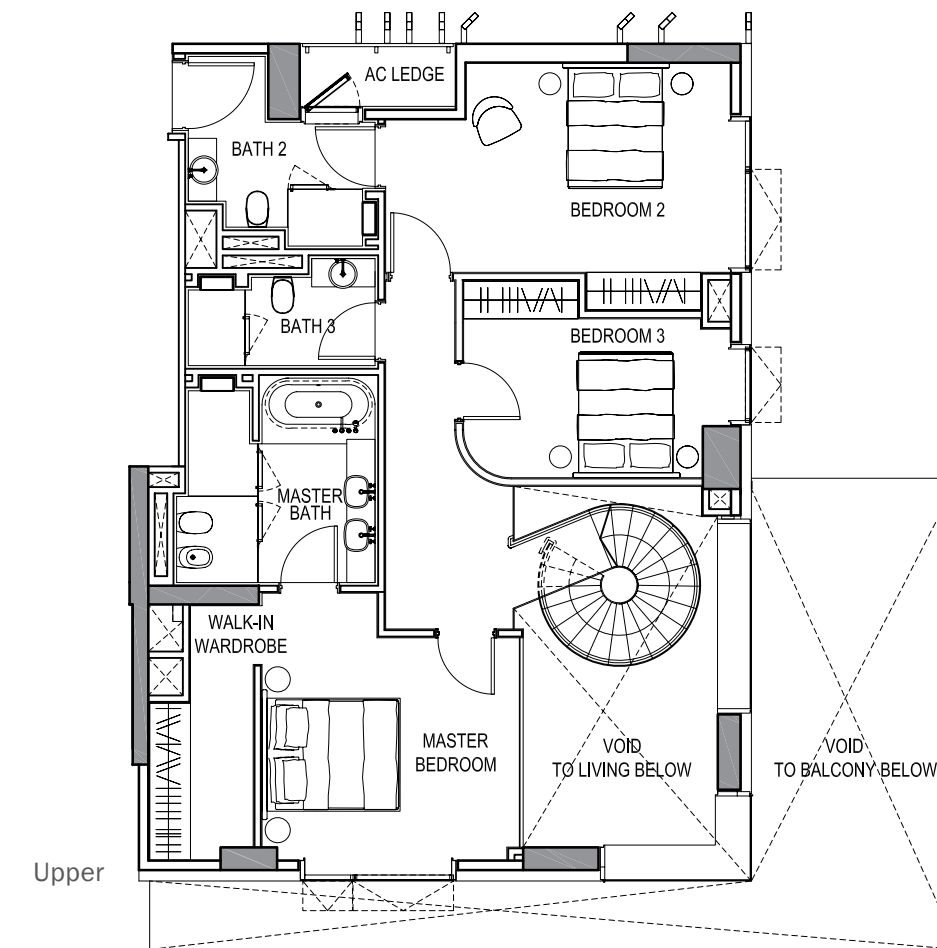
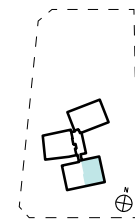
## Type C1-b1

Area: 302 sq m / 3,251 sq ft

#04-01, #06-01



Lower



Upper



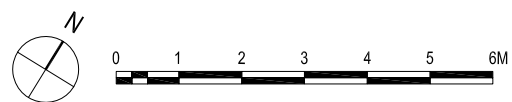
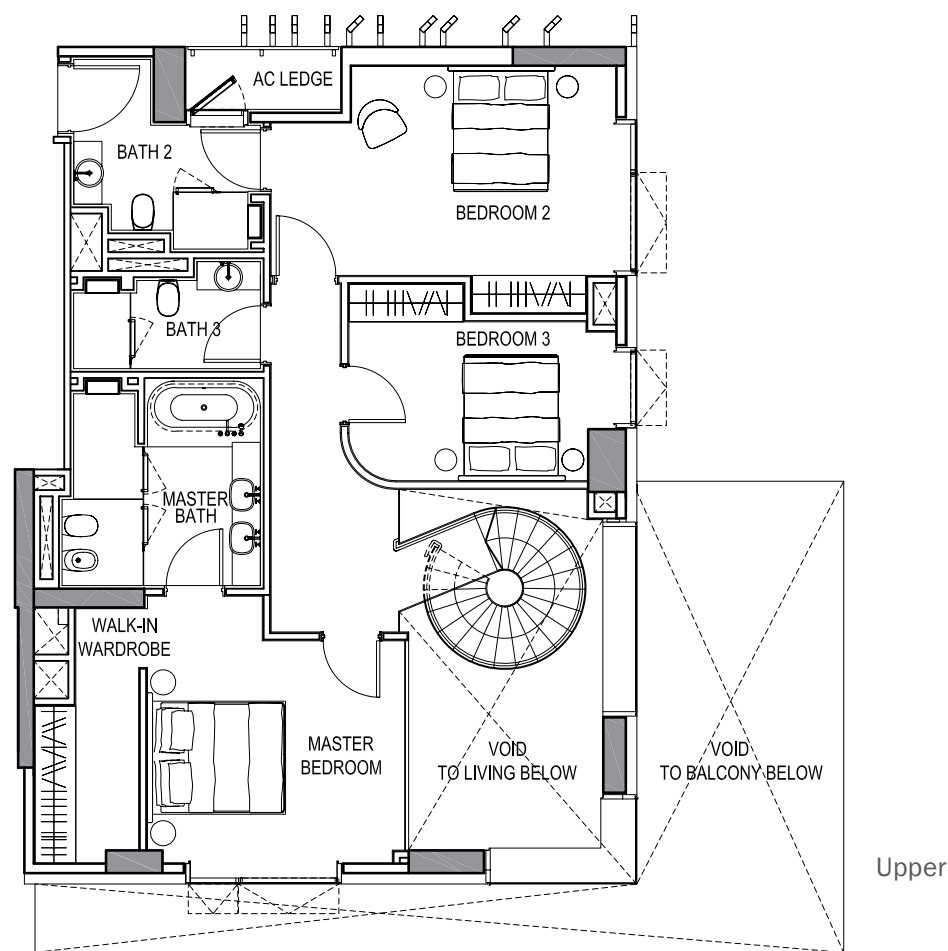
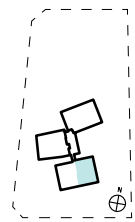
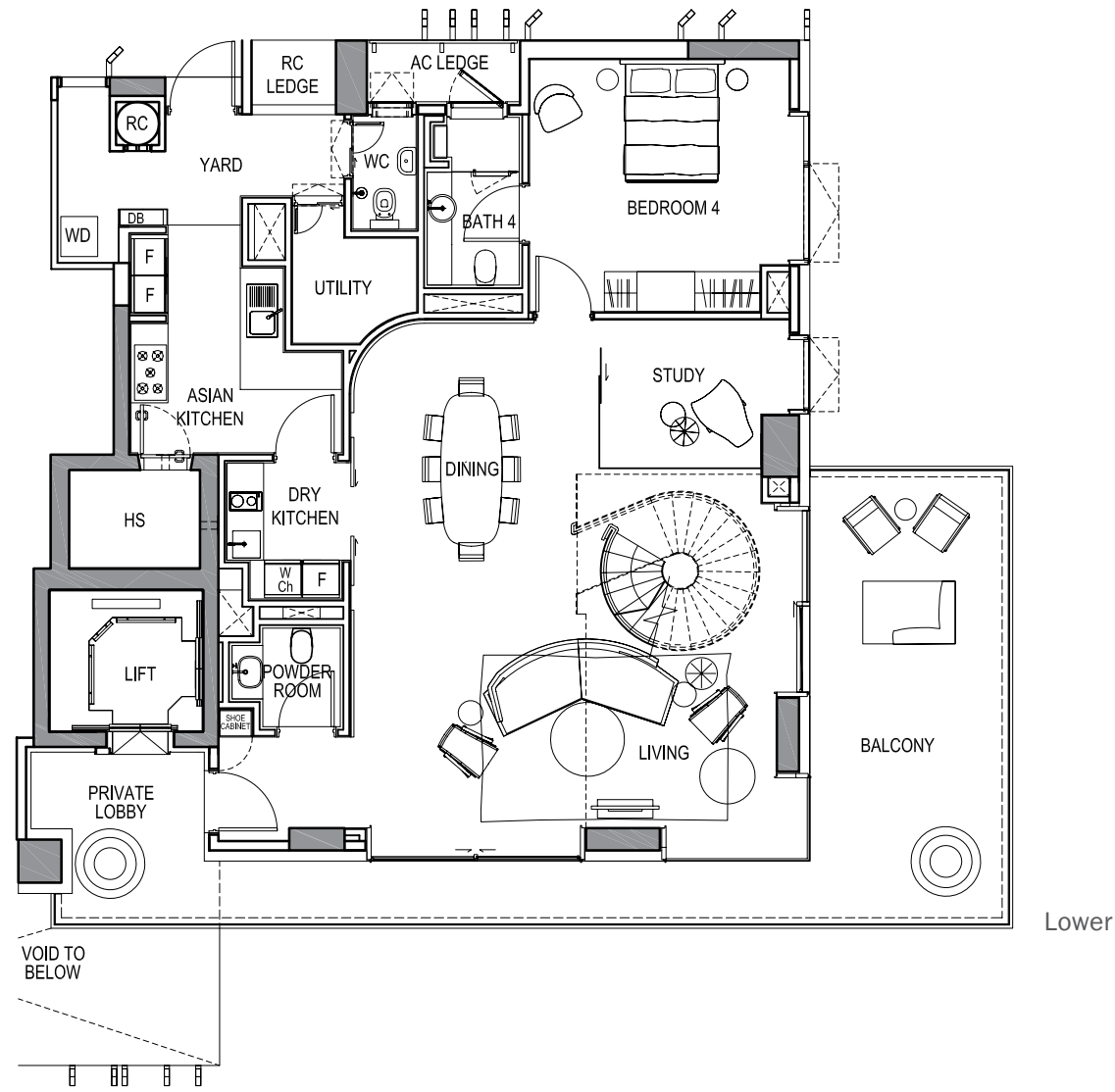
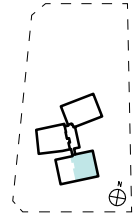


# 4-Bedroom

## Type C1-b2

Area: 302 sq m / 3,251 sq ft

#08-01

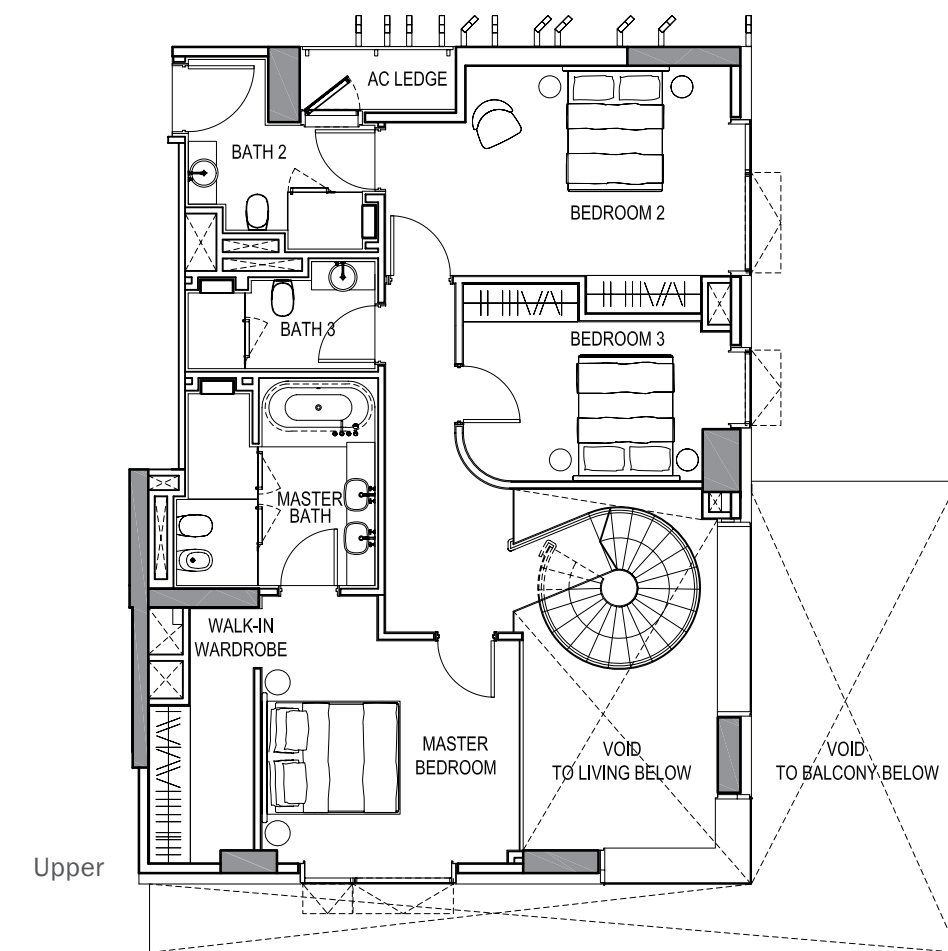
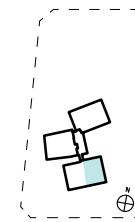
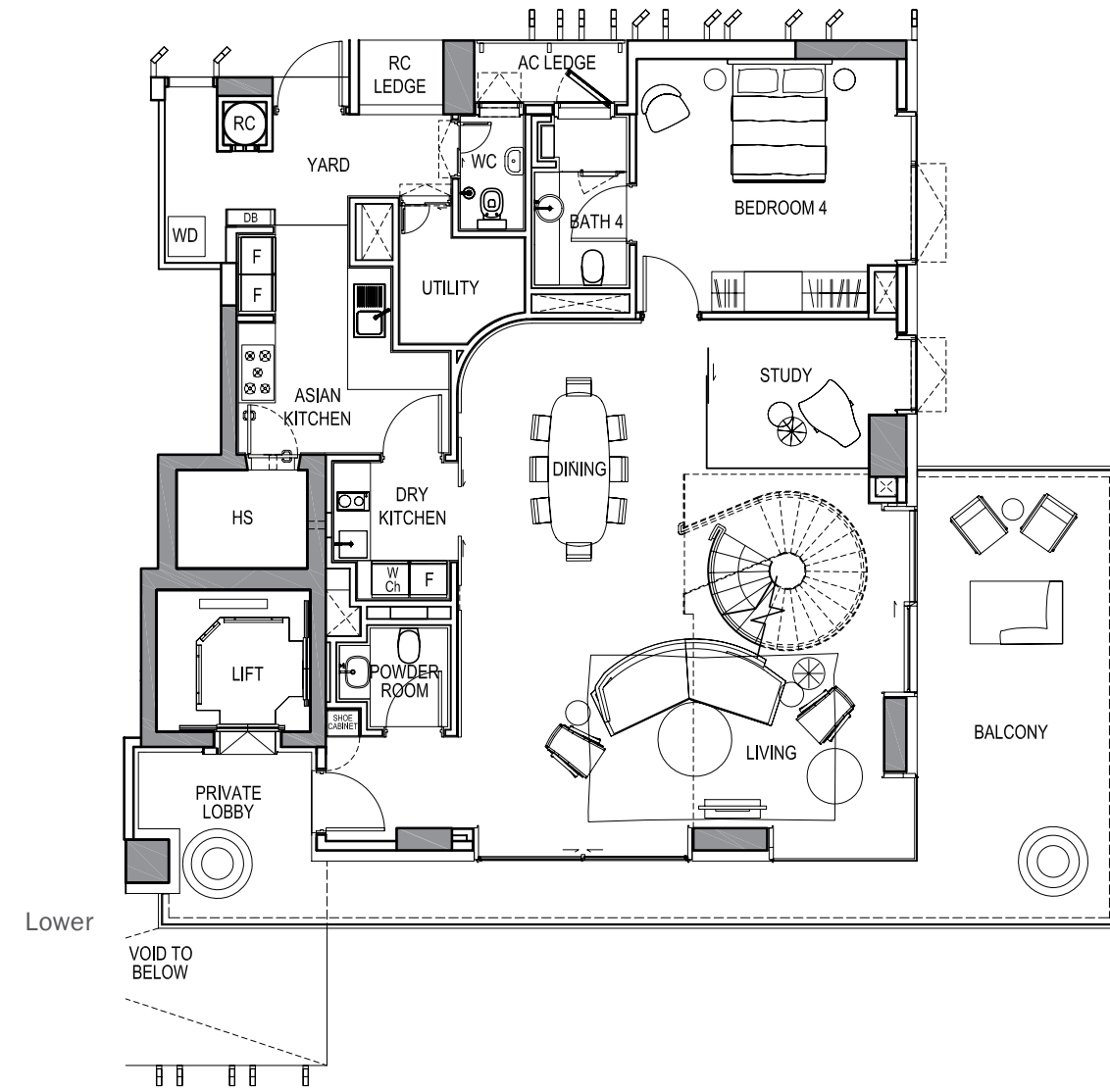
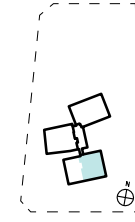


# 4-Bedroom

## Type C1-b3

Area: 302 sq m / 3,251 sq ft

#10-01, #12-01



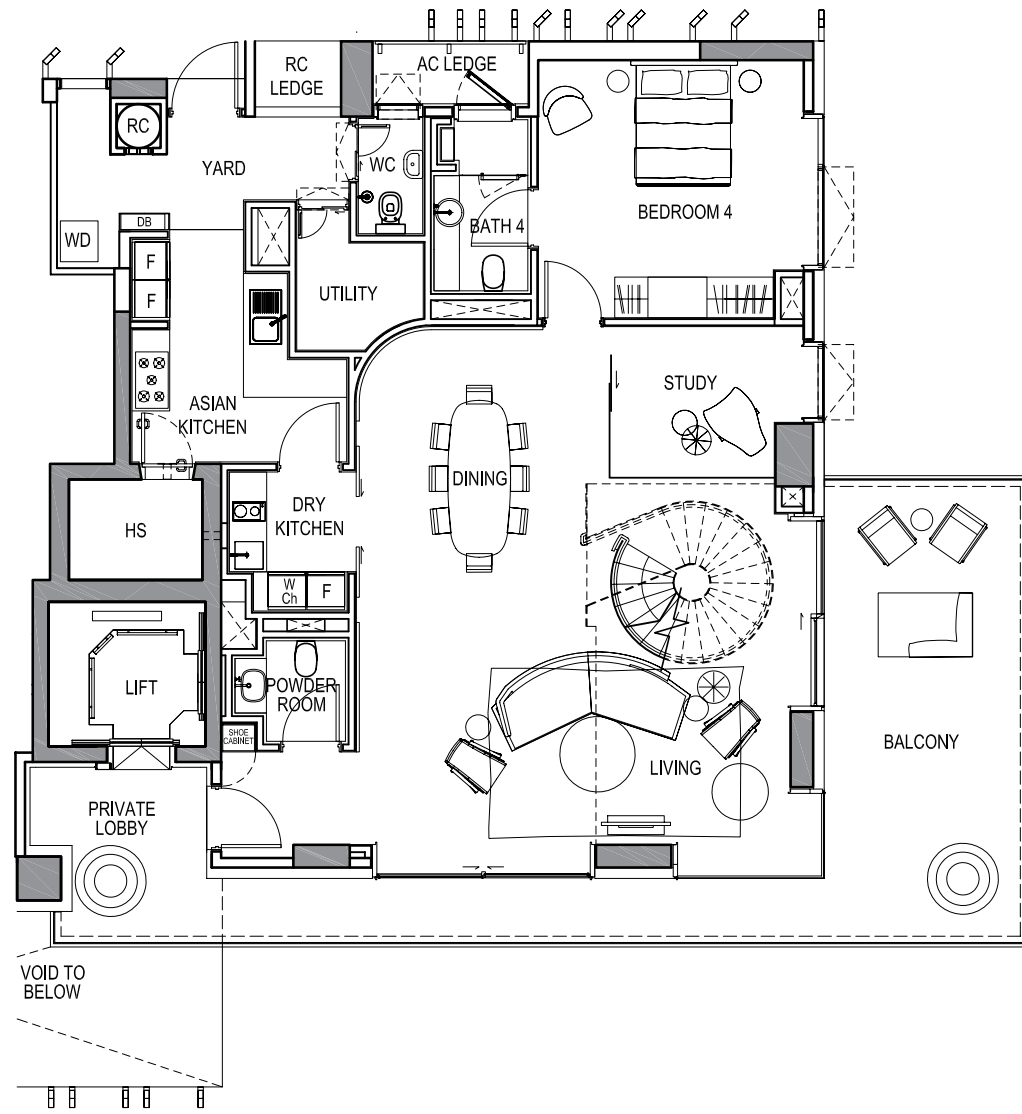
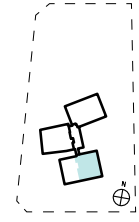


# 4-Bedroom

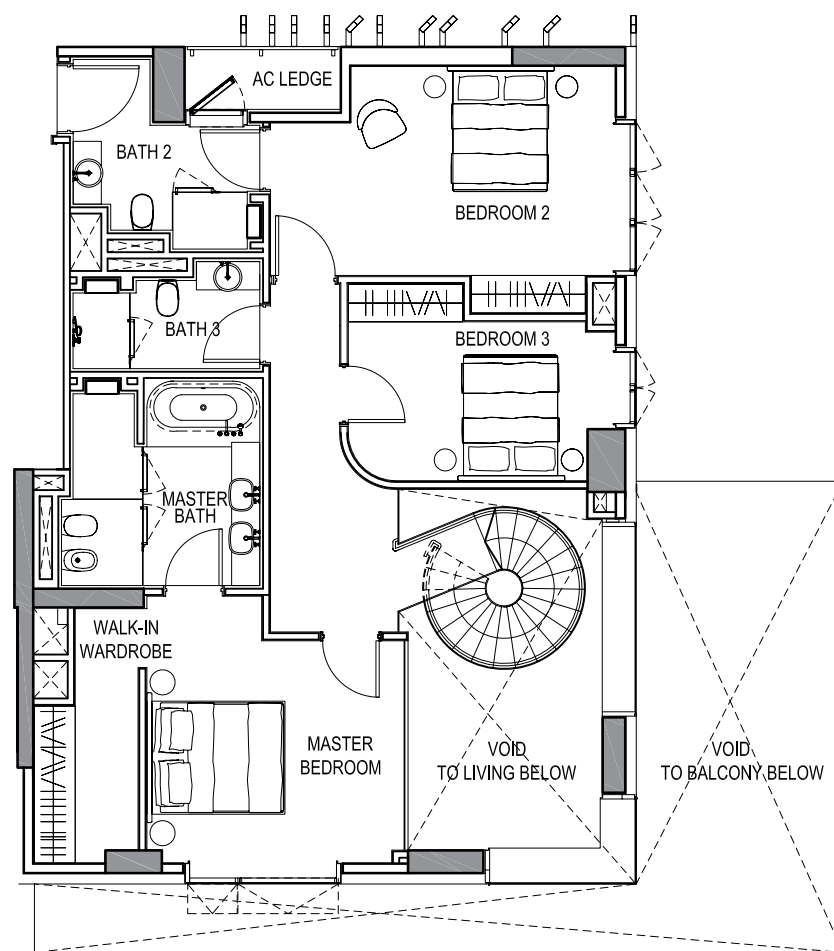
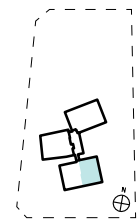
## Type C1-b4

Area: 302 sq m / 3,251 sq ft

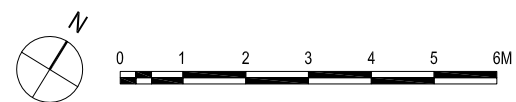
#14-01



Lower



Upper

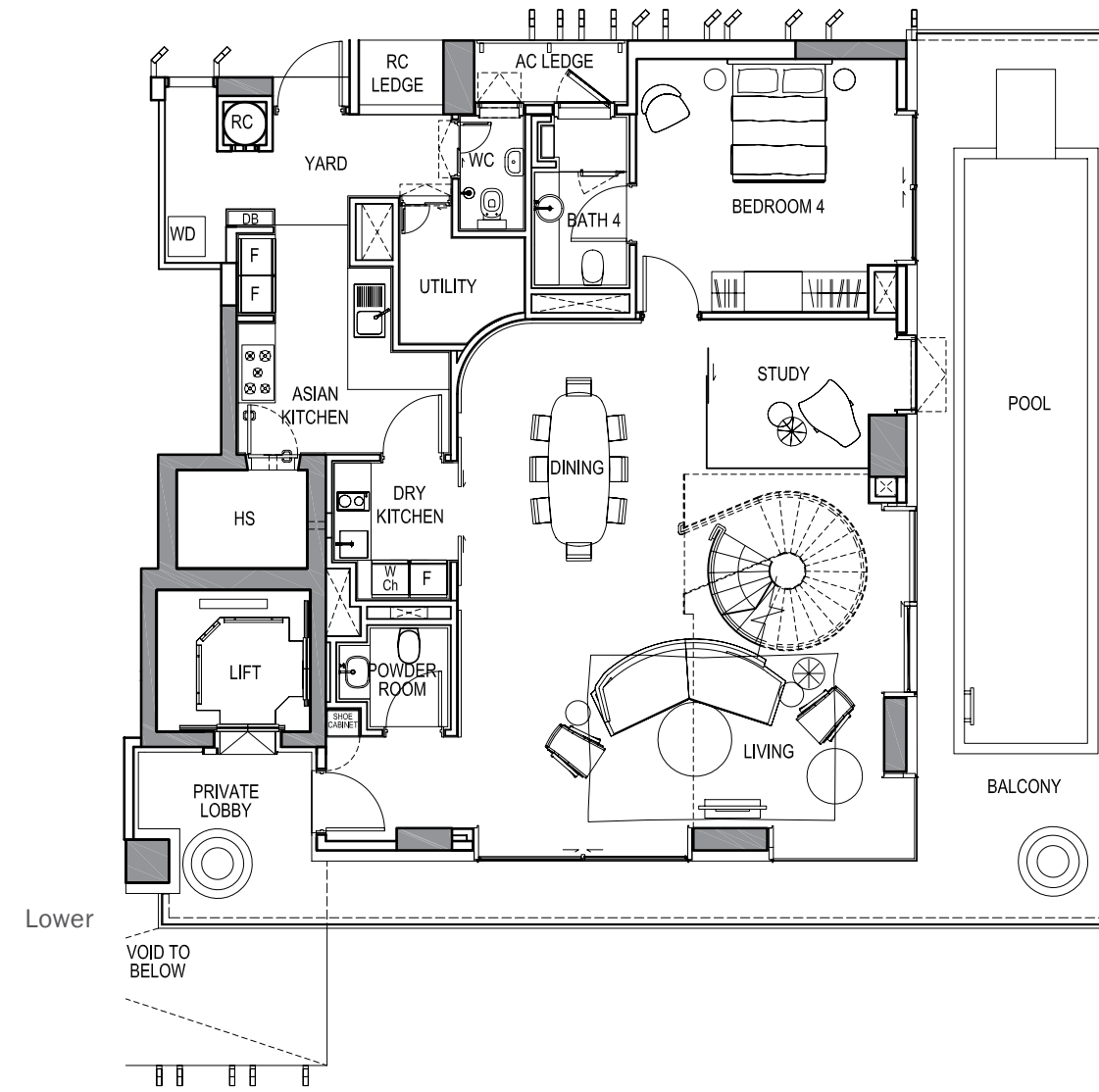
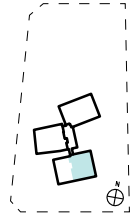


# 4-Bedroom

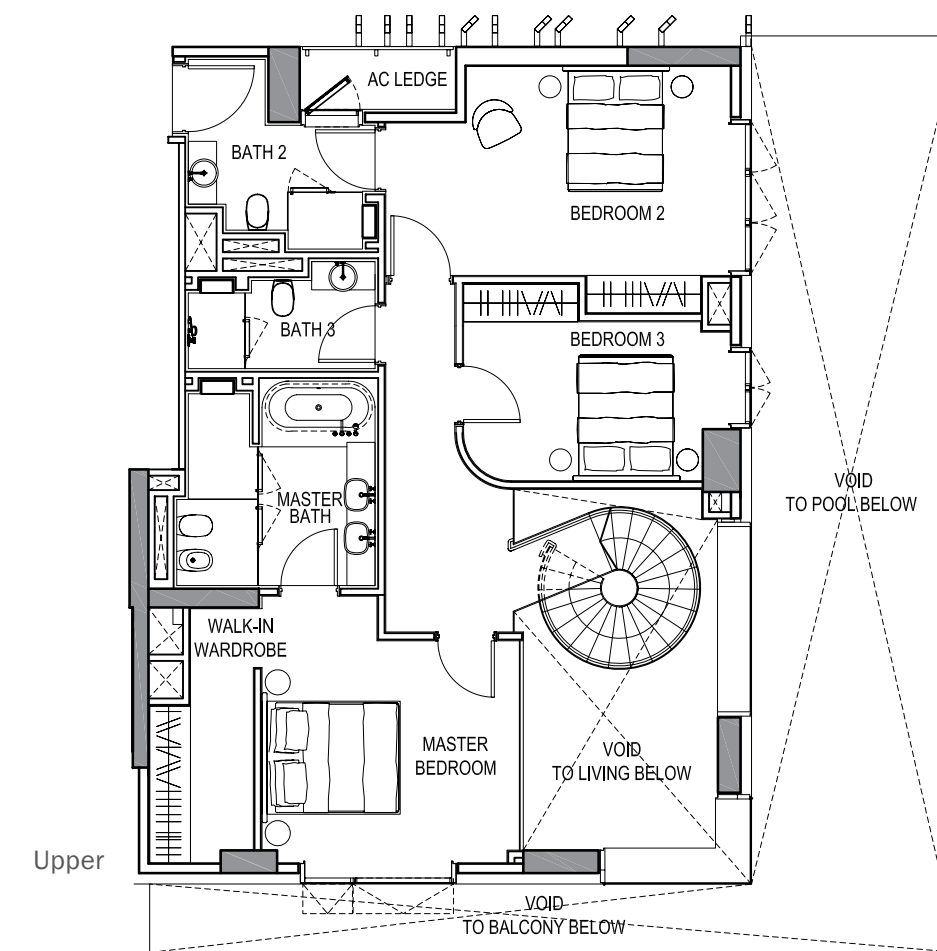
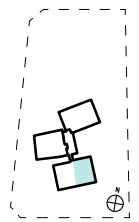
## Type C1-c1

Area: 326 sq m / 3,509 sq ft

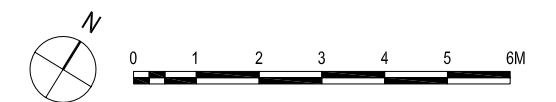
#16-01



Lower



Upper



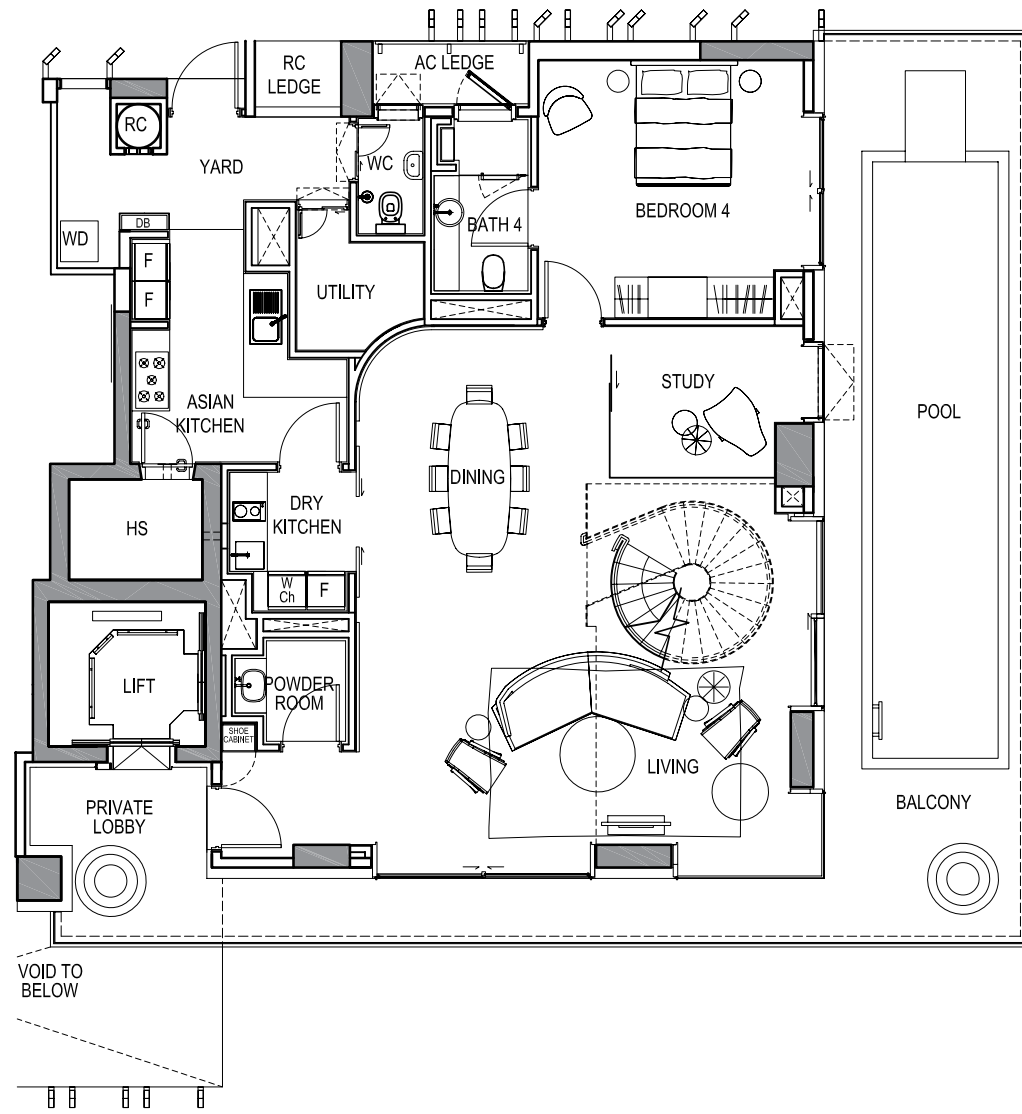
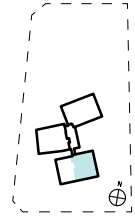


# 4-Bedroom

## Type C1-c2

Area: 326 sq m / 3,509 sq ft

#18-01



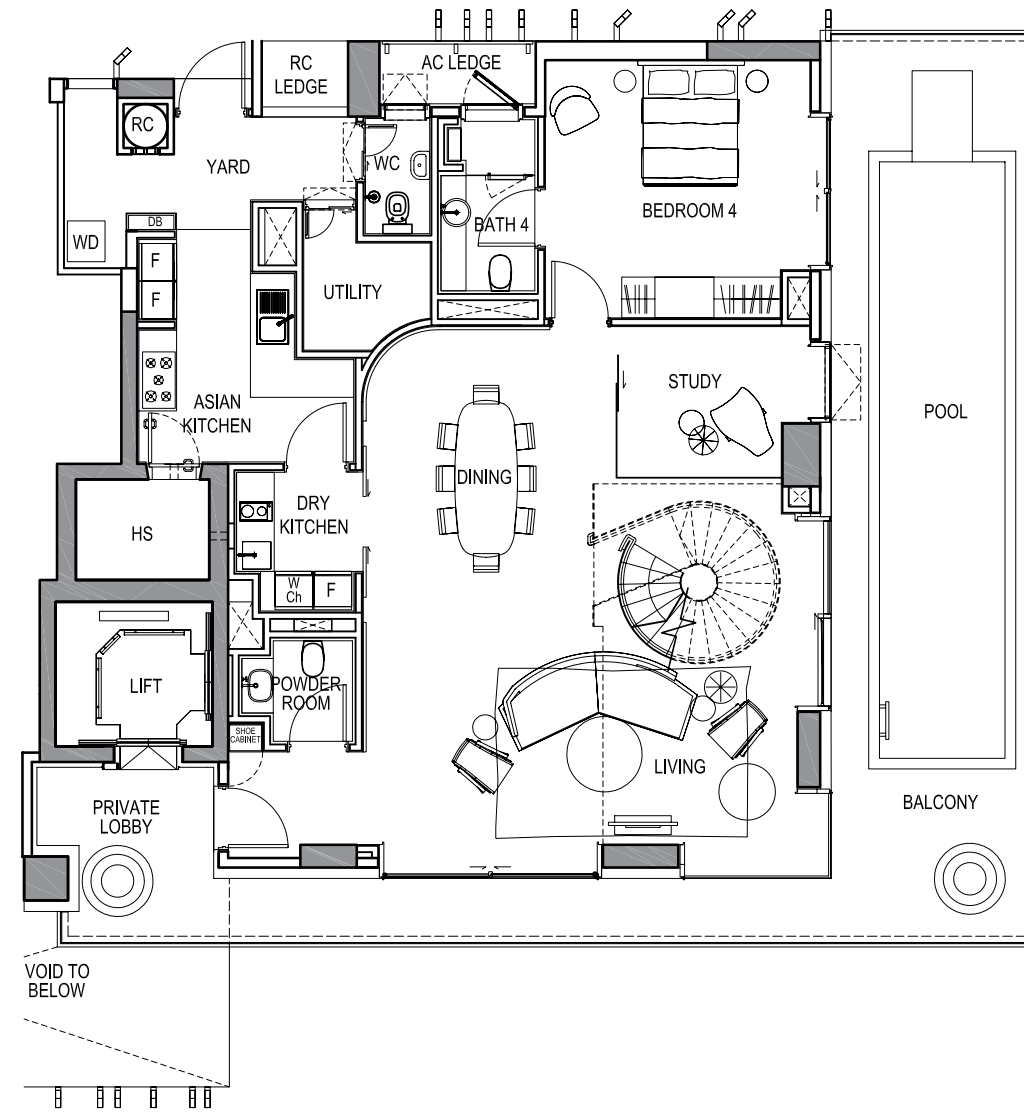
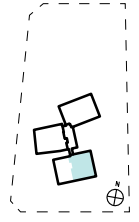
Lower

# 4-Bedroom

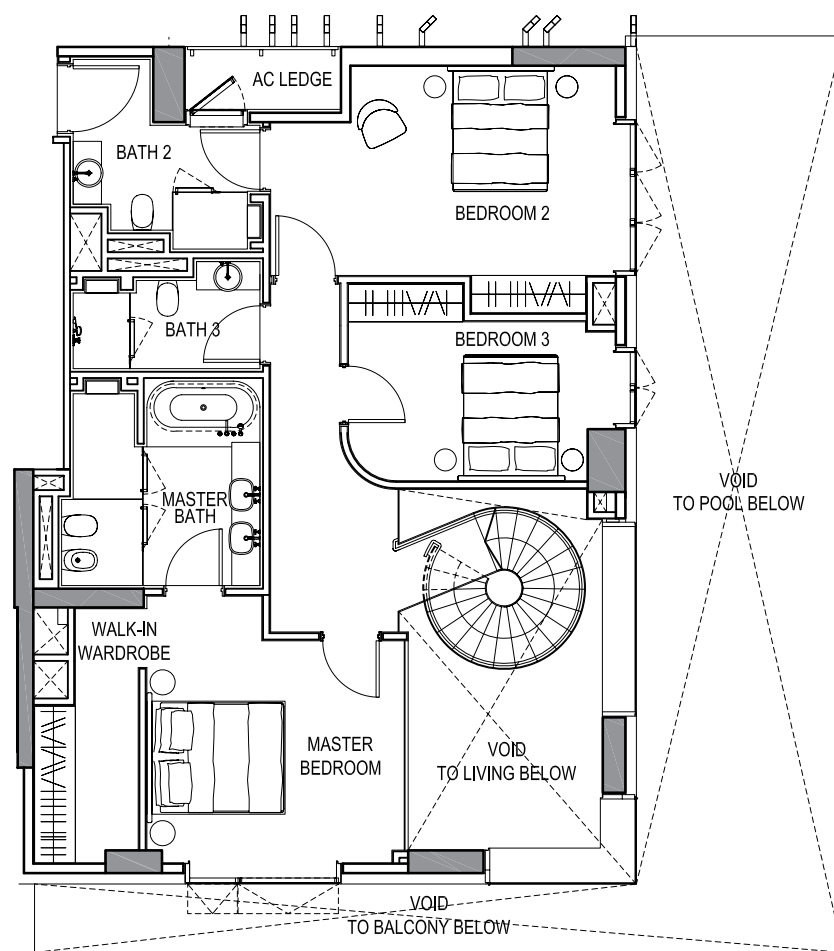
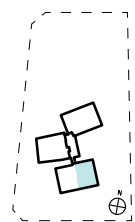
## Type C1-c3

Area: 326 sq m / 3,509 sq ft

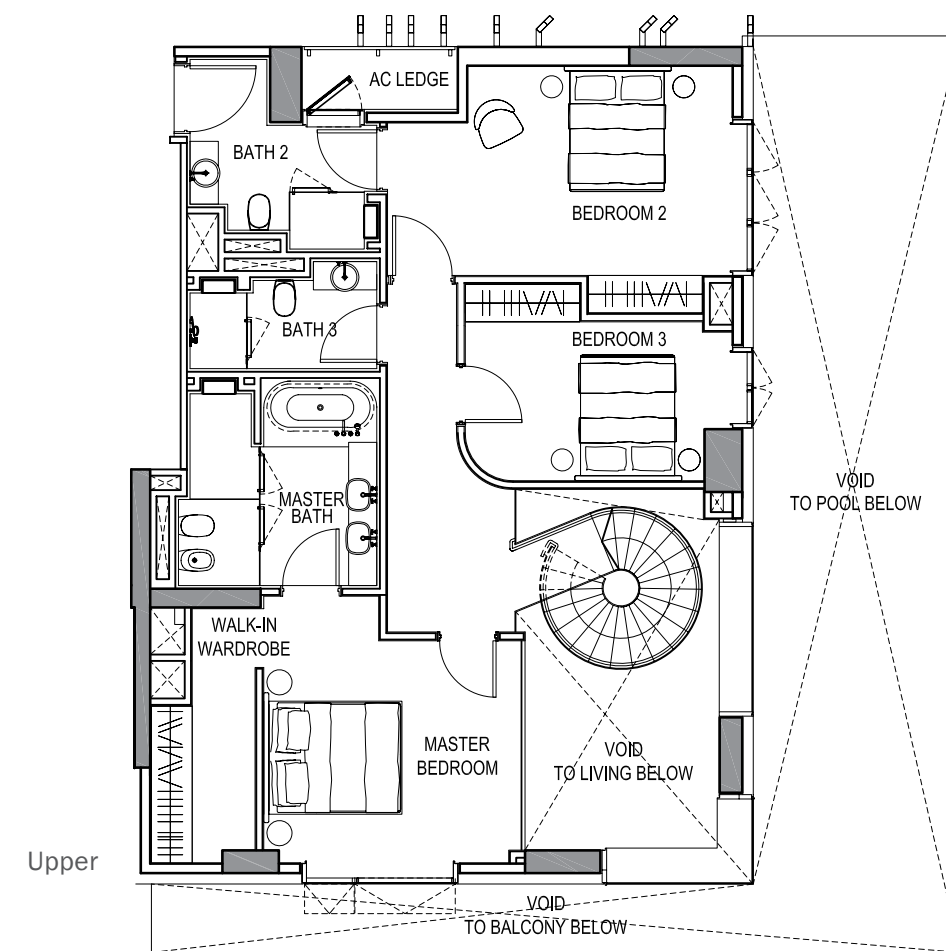
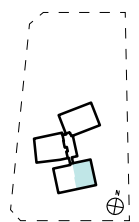
#20-01



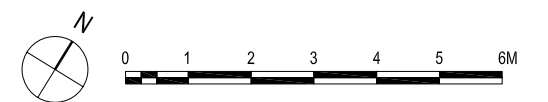
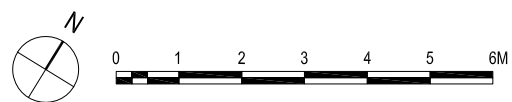
Lower



Upper



Upper





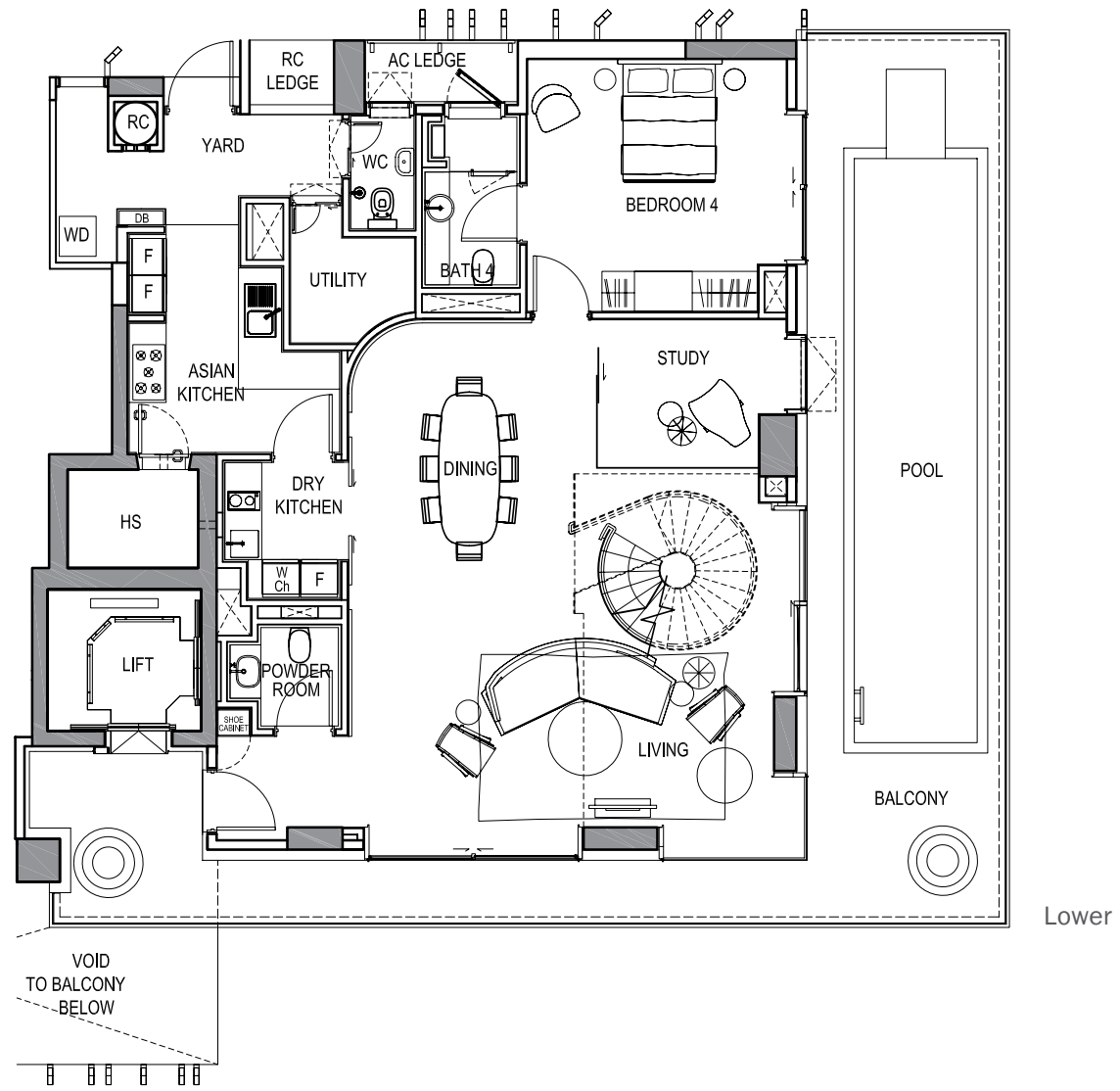
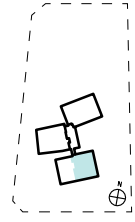
# 4-Bedroom

# Garden Suites

## Type C1-c4

Area: 326 sq m / 3,509 sq ft

#22-01

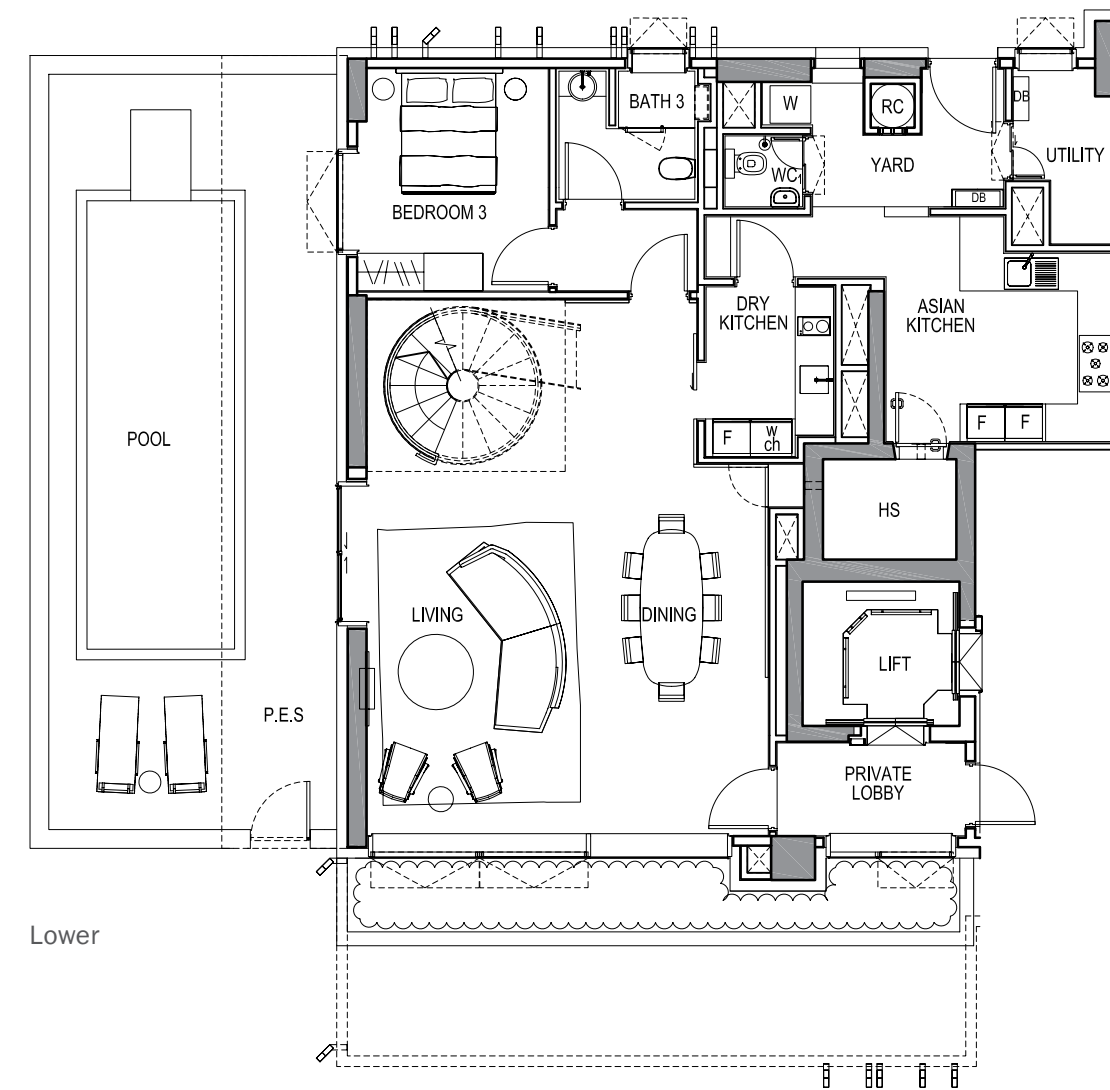
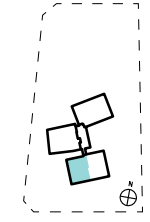


Lower

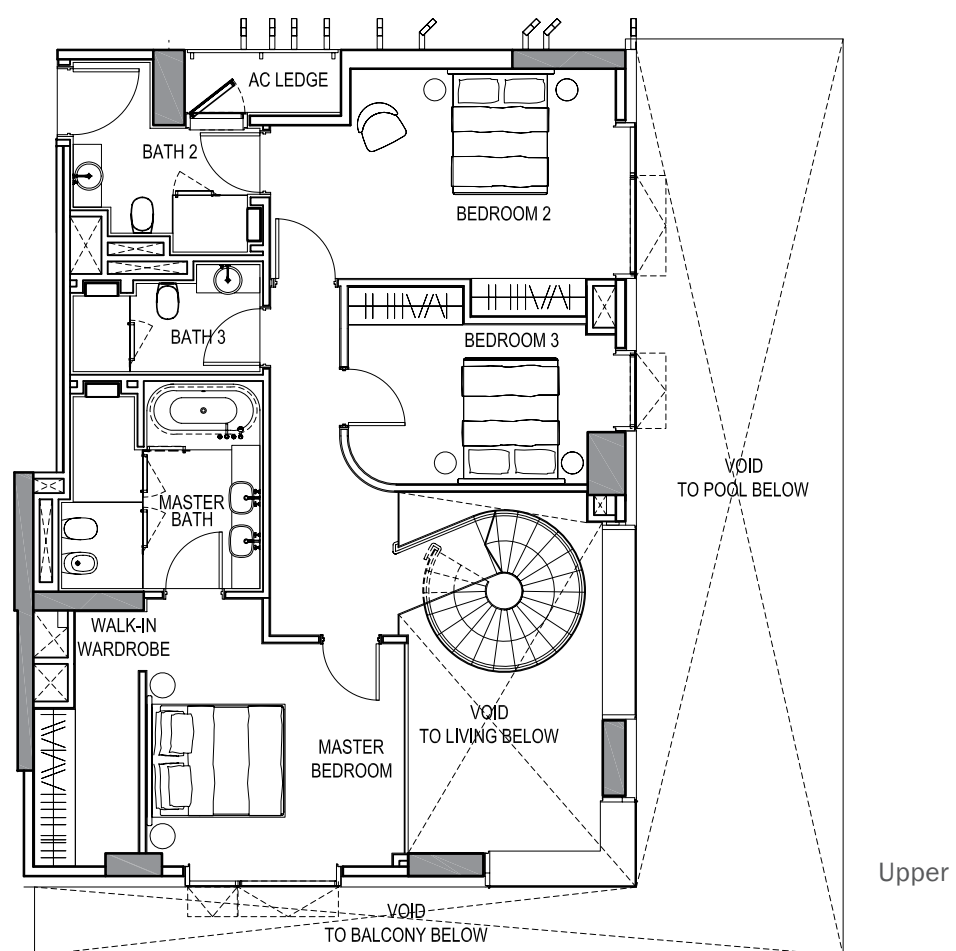
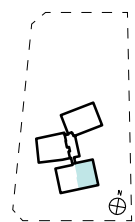
## Type G1

Area: 280 sq m / 3,014 sq ft

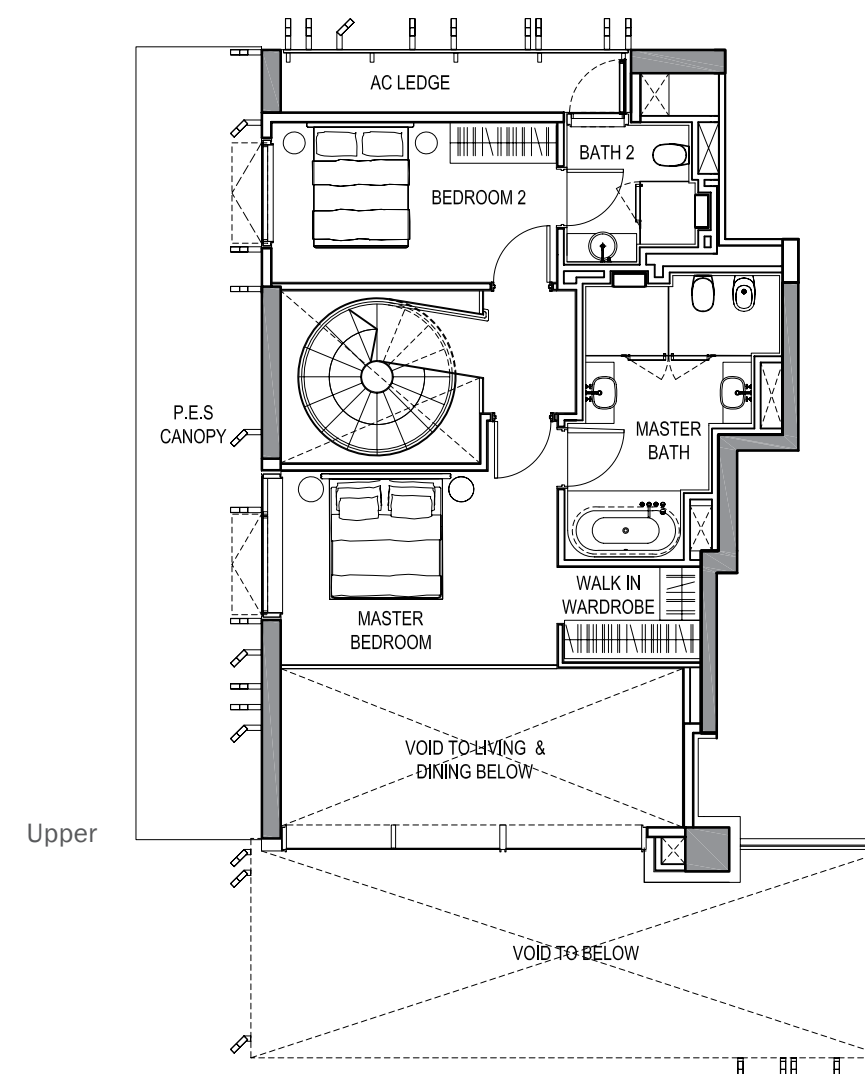
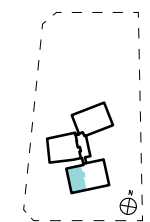
#01-01



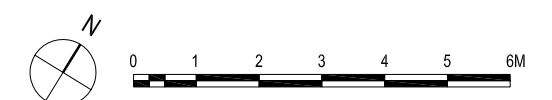
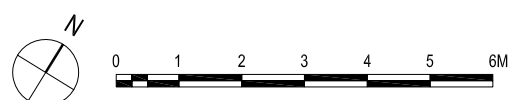
Lower



Upper



Upper





The background of the entire page is a close-up photograph of a light-colored, possibly beige or cream, marble surface. The marble has a complex, organic pattern of veins and swirls in shades of light brown, tan, and off-white. The texture appears smooth but with natural variations in color and pattern. Overlaid on the left side of this background is a solid, medium-tan rectangular box. Inside this box, the title 'THE PENTHOUSE COLLECTION' is written in a dark brown, serif, all-caps font. Below the title, there is a paragraph of text in a smaller, dark brown, sans-serif font.

## THE PENTHOUSE COLLECTION

Siting atop this timeless architecture are two rare, elegant and luxurious penthouses bringing you a life of unsurpassed comfort and prestige. Unique and spectacular, each penthouse provides beautiful inspiring spaces accompanied with picturesque views of the Orchard skyline, a private pool, five bedrooms and your very own private lift, making this your masterpiece home like no other.

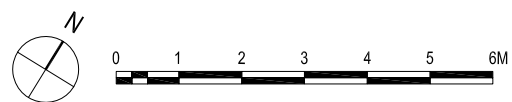
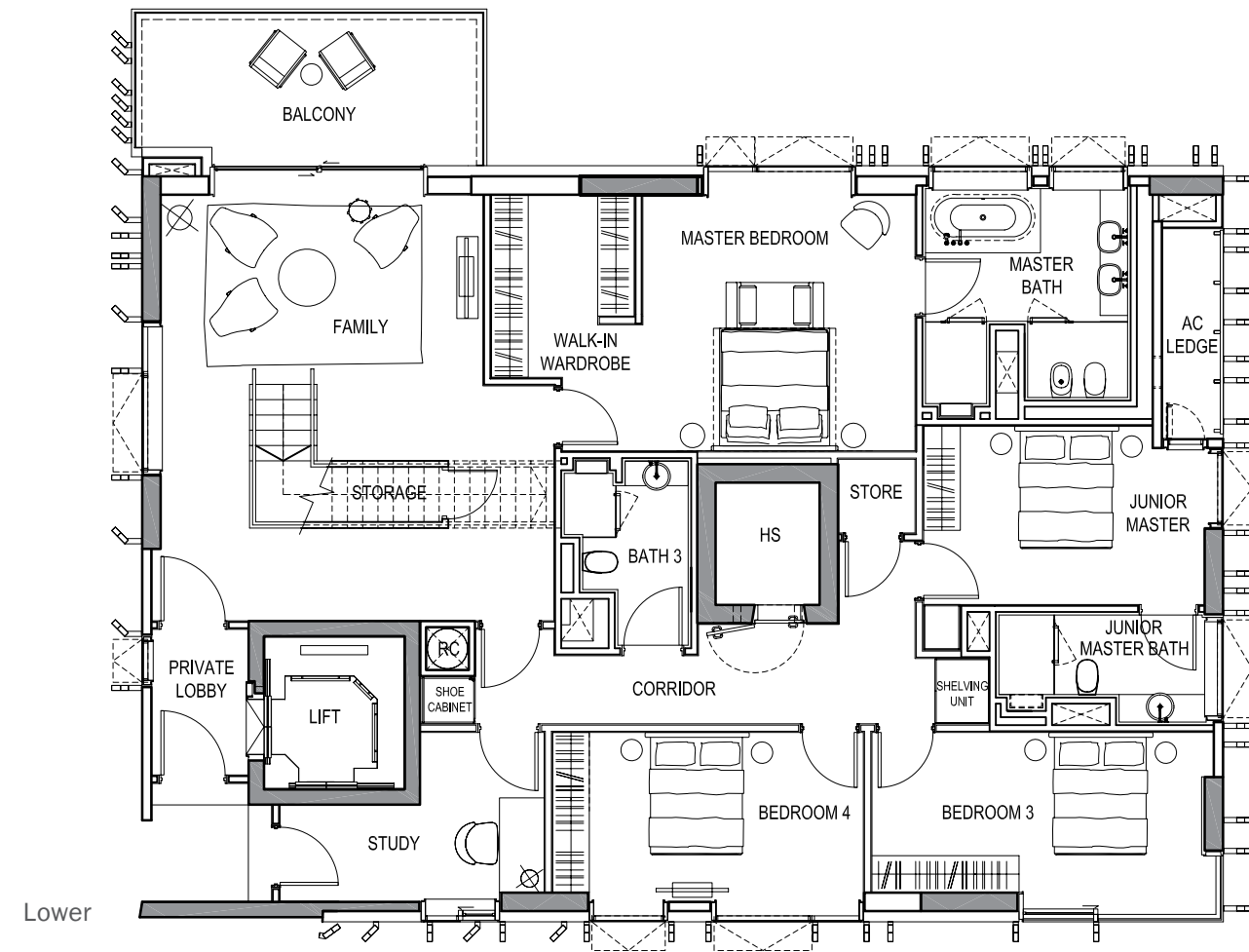
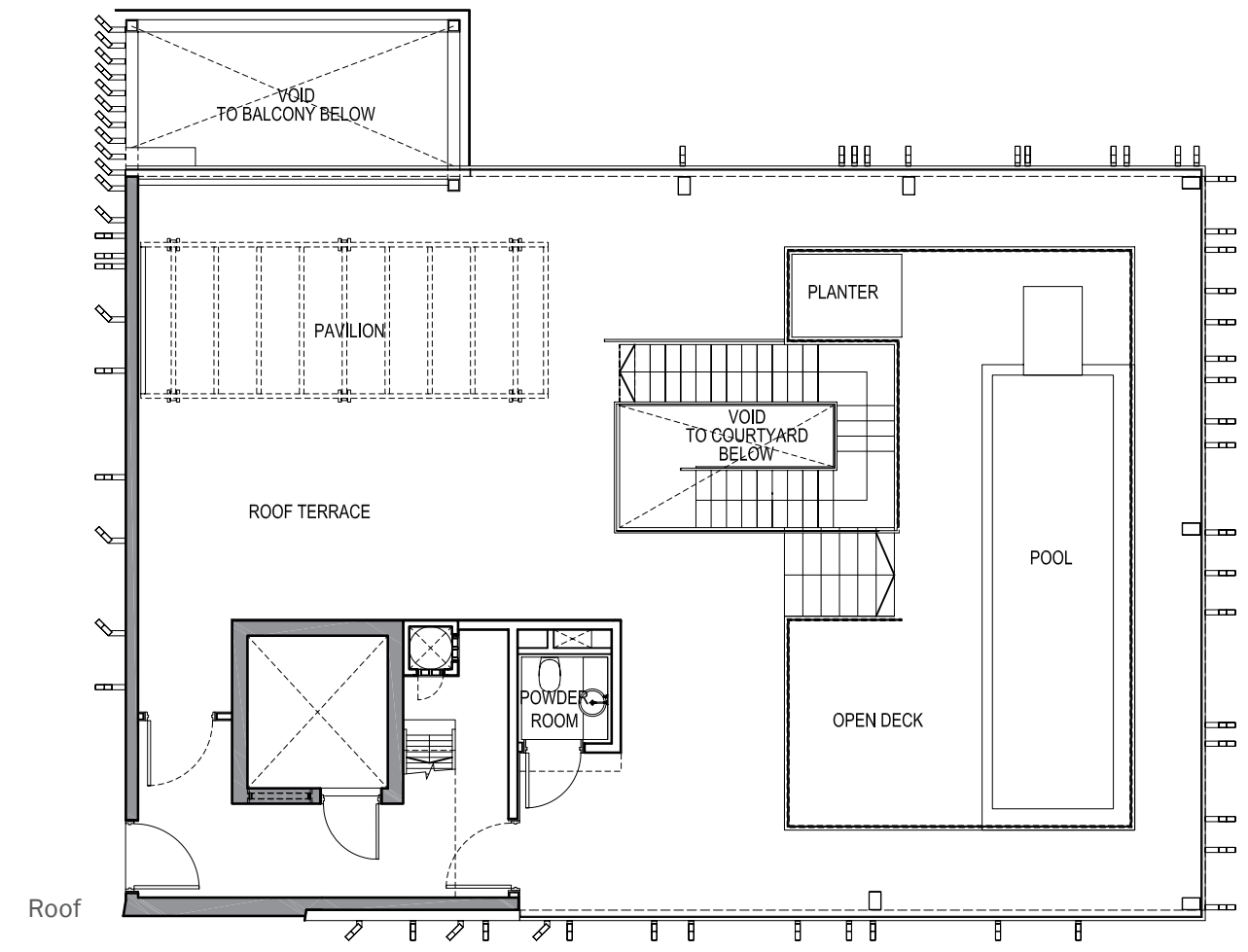
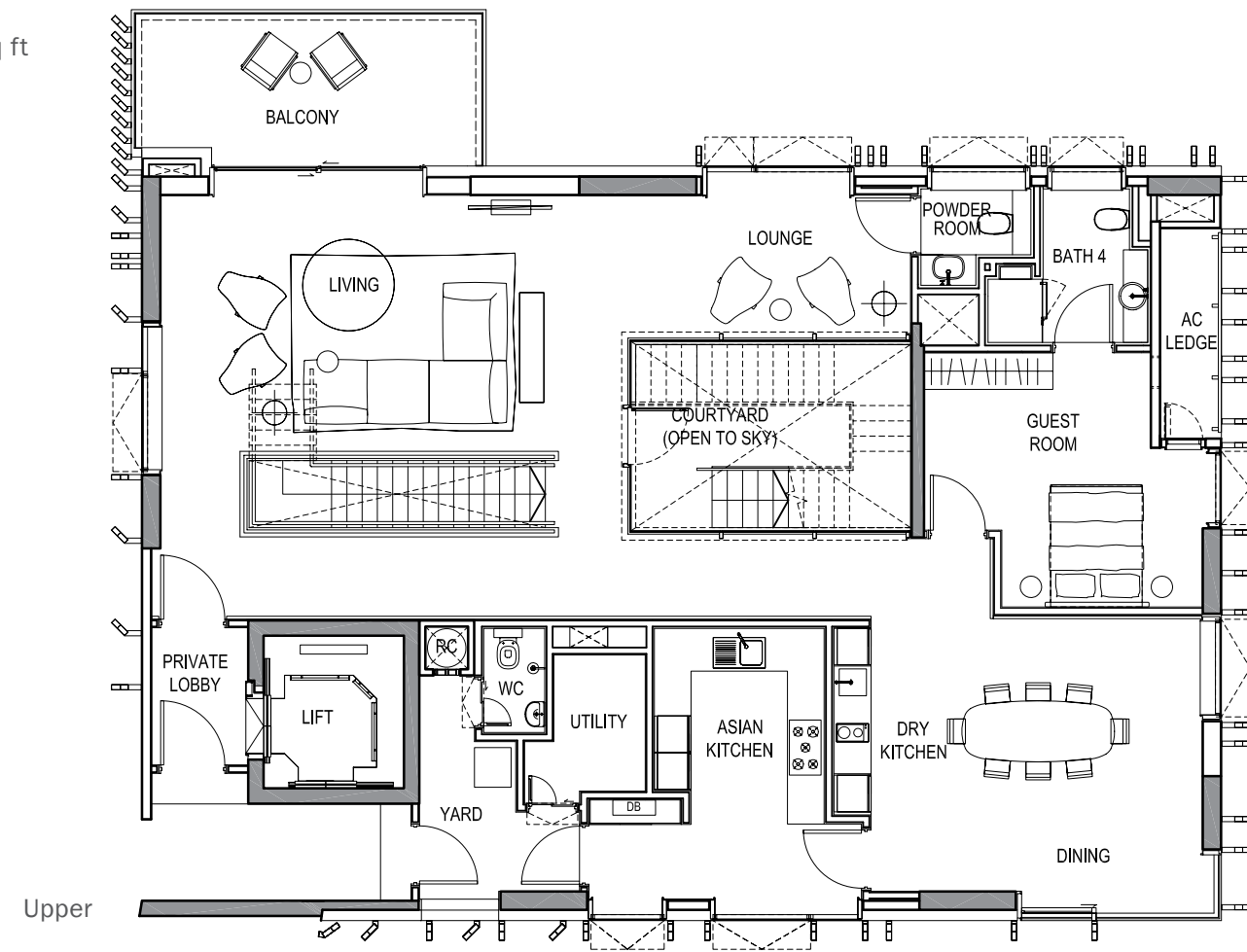
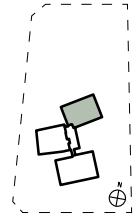


# Penthouse

## Wood Tower Type PH-AB

Area: 609 sq m / 6,555 sq ft

#25-03



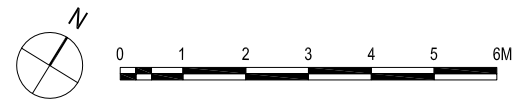
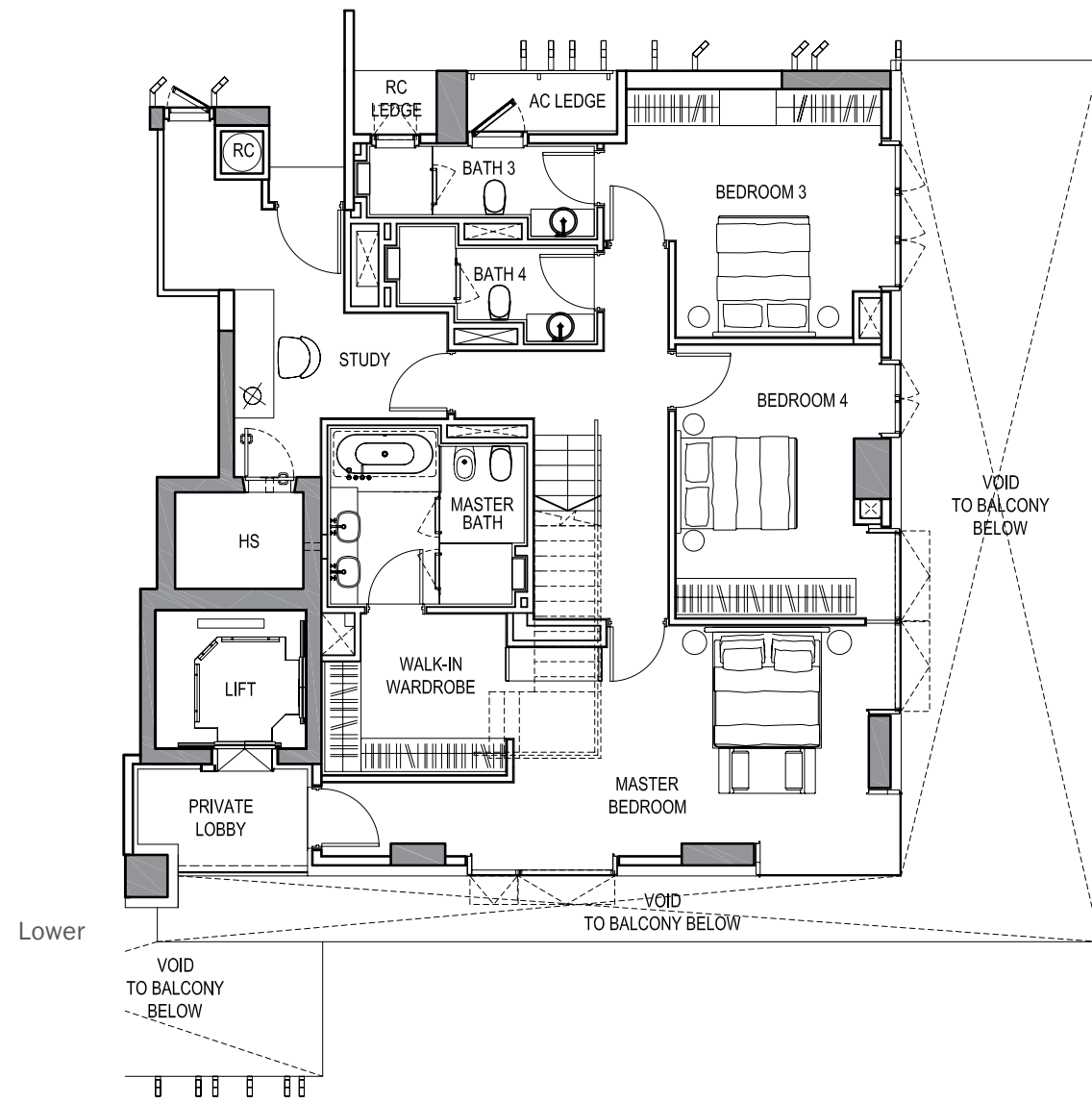
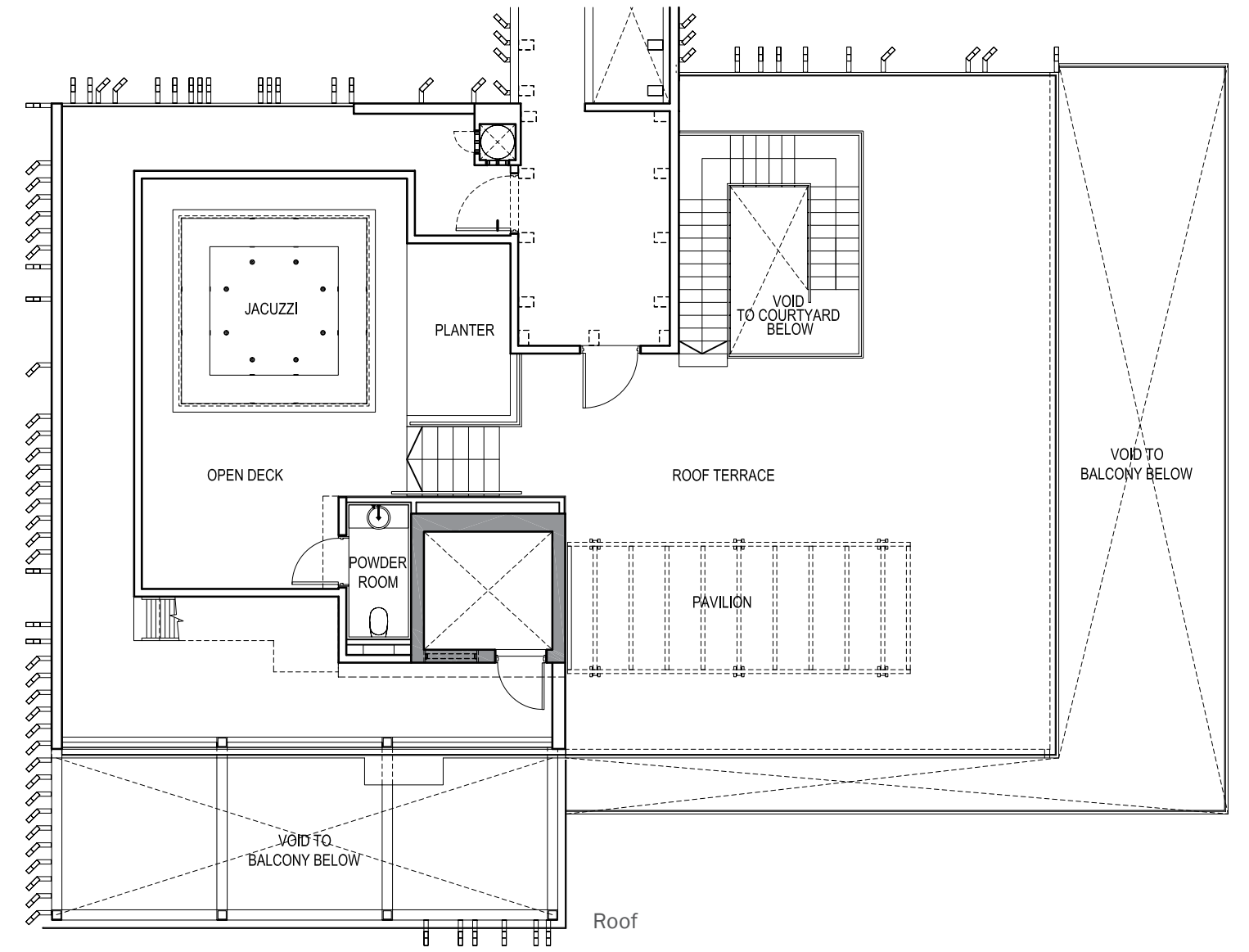
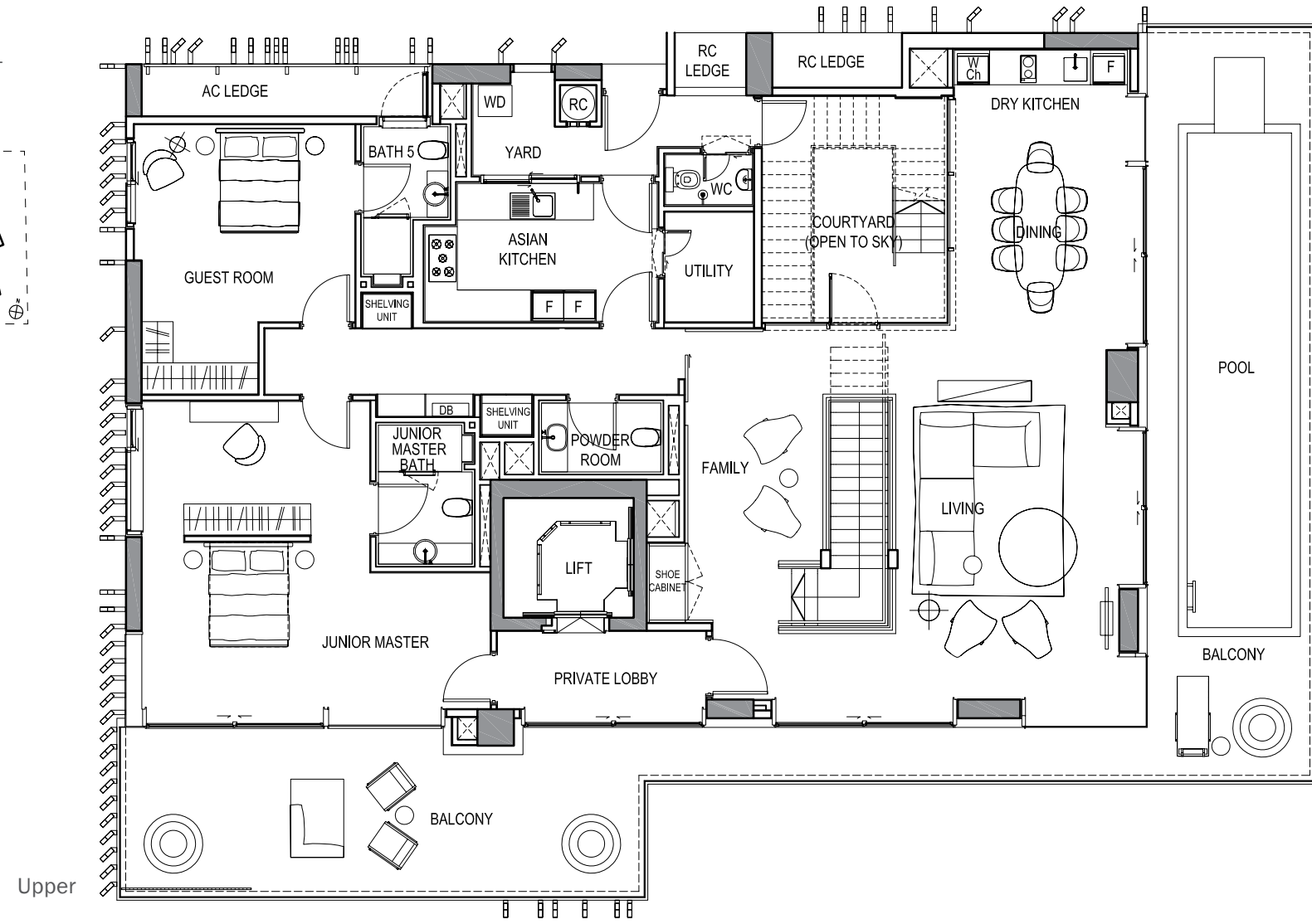
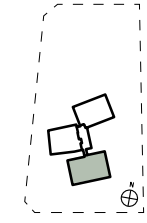


# Penthouse

## Water Tower Type PH-AC

Area: 641 sq m / 6,900 sq ft

#25-01





# The Mark Of Sustainable Luxury Living

Sustainability has always been a cornerstone of the YTL Group to improve the natural environment for future generations.

3 Orchard By-The-Park, has embraced sustainability with green technologies that redefine eco-luxury living to achieve the BCA Green Mark Gold<sup>PLUS</sup> Award, making it truly the mark of a masterpiece.



## Green Urban Design

- Good Thermal Performance
- Sun shading and good ventilation to reduce energy consumption



## Energy Efficiency

- Energy efficient air-conditioning systems provided to all residences
- Built-in motion sensors at staircases, common toilets and lift lobbies
- Lifts equipped with a Variable Voltage Variable Frequency (VVVF) drive and “sleep mode function”
- Provision of Energy Monitoring Meters and ecoplugs to all units
- Energy saving lightings in all common areas
- Use of ductless fans and CO sensors for carpark



## Water Efficiency

- The use of water-saving fixtures within the development
- Water efficient washing machines provided to all residences
- Provision of private water meters to monitor water usage for swimming pools and common areas
- Automatic drip irrigation system with rain sensor to at least 50% of landscaped area



## Environmental Protection

- Use of Green Cement and Recycled Aggregate Concrete (RCA) for structural elements
- Use of sustainable products (certified by local certification bodies such as Singapore Green Building Council and Singapore Environment Council) including:
  - Waterproofing
  - Engineered external wood decking
  - Recycled ceiling boards
  - Drywall partitions
  - Landscaped drainage cells
  - Exterior wall paints
  - Precast concrete panels
  - Use of low Volatile Organic Compound (VOC) paints for internal walls



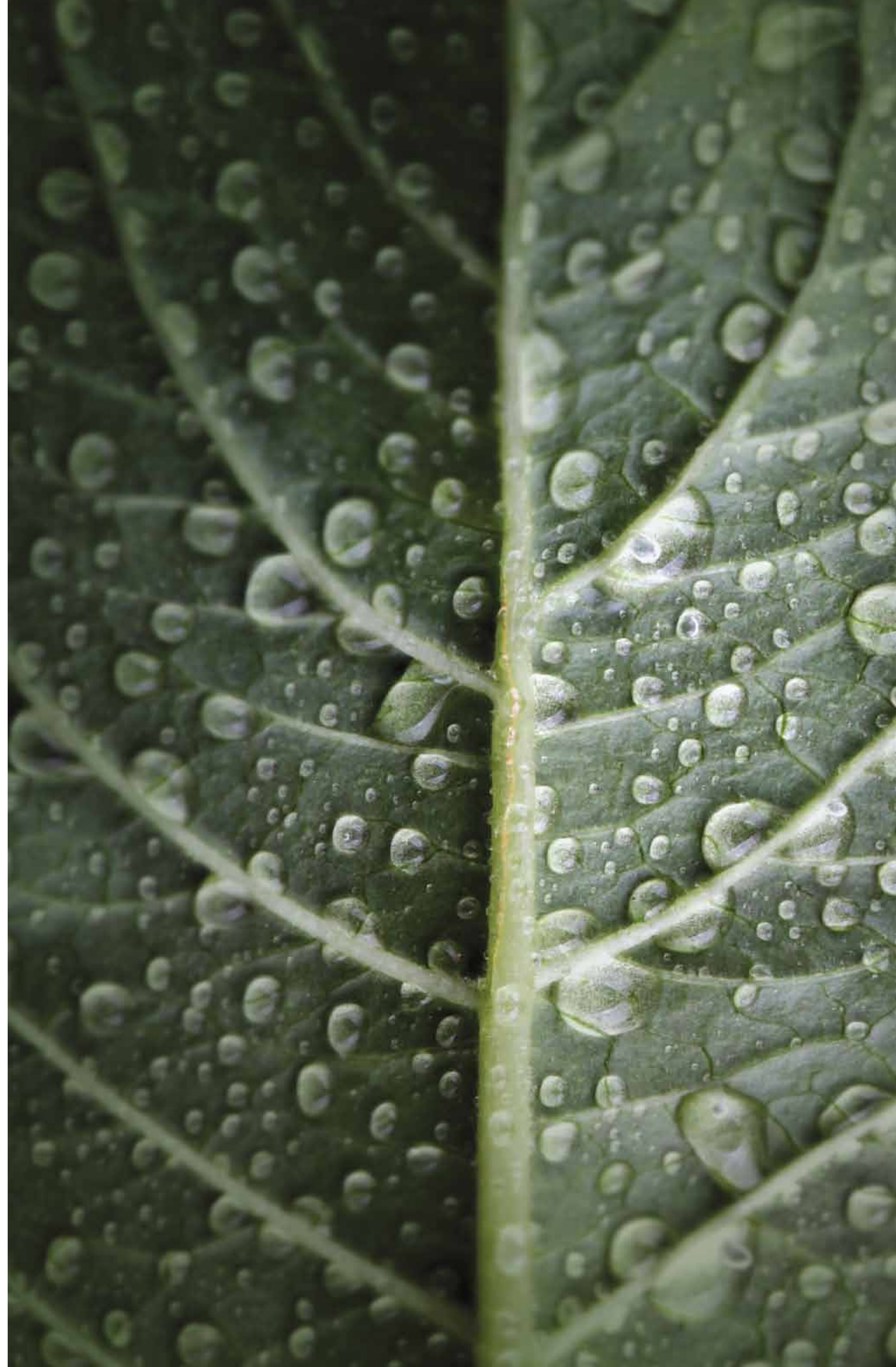
## Waste Management

- Use of compost recycled from horticulture waste for landscaped areas
- Provision of recycling bins



## Other Green Features

- Provision of Green Lot with vehicle charging station
- Provision of sheltered bicycle parking lots
- Extensive landscaped area and conservation of trees within the development





# Shaping Cityscapes, Globally.

YTL Corporation Berhad, incorporated in 1955 and today, is a conglomerate with a diversified portfolio of businesses spanning a large range of industries – utilities, construction and cement, telecommunications and transport infrastructure, real estate and luxury hospitality. Serving 12 million customers across Asia, Australia and Europe, it has been listed on Bursa Malaysia since 1985.

With a combined market capitalisation of about US\$6.5 billion, it is one of the largest diversified groups listed on the Bursa Malaysia, and the first non-Japanese Asian company to be listed on the Tokyo Stock Exchange.

YTL Corporation's residential property development activities are undertaken through YTL Land & Development Berhad (YTL Land).

Having won multiple regional and international awards including the FIABCI Prix d'Excellence Award, YTL Land has built up an excellent track record of building high quality houses, condominiums and mixed-use properties with attractive and innovative designs. As a leader in sustainability practices, the company incorporates green designs into the engineering and architecture of their developments, promotes environmental renewal and cultivates sustainable ideas and habits within their communities.

With a growing land bank of more than 2,000 acres across Malaysia, YTL Land's celebrated portfolio includes the high-profile masterplan of the 294 acre Sentul in Kuala Lumpur, Malaysia, as well as the award-winning Sandy Island and Kasara, the Lake villa collections in Sentosa Cove, Singapore's exclusive gated marina community.

YTL Hotels, the hospitality arm of YTL Corporation, has an impressive portfolio of 30 luxury hotels and resorts in 8 countries, including the highly acclaimed Pangkor Laut Resort, The Majestic Kuala Lumpur, Ritz Carlton Kuala Lumpur and JW Marriott Hotel Kuala Lumpur in Malaysia; Spa Village Resort Tembok, Bali in Indonesia; Sydney Harbour Marriott Hotel in Australia and MUSE Saint Tropez in France.

YTL's illustrious track record also extends to the world-class ski resort, Niseko Village, in Hokkaido (which won Best Ski Resort in Japan) and the recent additions of The Gainsborough Bath Spa, set in the heart of Bath, a World Heritage Site; The Glasshouse

Hotel; Monkey Island and The Academy Hotel. More upcoming luxury projects in the pipeline include The Ritz Carlton Hotel in Koh Samui, The Ritz Carlton Reserve, W and Edition Hotels in Niseko.

In the premium lifestyle arena, YTL owns the luxurious Starhill Gallery in Kuala Lumpur, housing 70 of the world's best luxury brands in its seven storey retail mall and the highly-acclaimed Eastern & Oriental Express train, which runs from Singapore up through the length of peninsular Malaysia and southern Thailand to Bangkok.





**ENQUIRIES**

**YTL Westwood Properties Pte Ltd**

435 Orchard Road  
#14-01 Wisma Atria  
Singapore 238877

+65 6578 9020

enquiries@ytl.com.sg

www.ytlland.com  
www.3orchardbythepark.com.sg



The Ritz Carlton Hotel, Koh Samui, Thailand



Pangkor Laut Resort, Pangkor, Malaysia



MUSE, Hotel De Luxe, St. Tropez, France



Swatch Art Peace Hotel, Shanghai, China



Starhill Gallery, Kuala Lumpur, Malaysia

**DISCLAIMER**  
While all reasonable care has been taken in preparing this brochure, the developer and its agent(s) shall not be held responsible for any inaccuracies or omissions. All statements are believed to be correct at time of print. They shall not be regarded as statements or representations of facts and are not intended to form any part of the contract for the sale of the units. Visual representations including models, drawings, illustrations, photographs, videos and renderings portrayed are artistic impressions only and are not to be taken as representations of fact. Floor areas and measurements are approximate only and are subject to final survey at the absolute discretion of the developer or if required under the law. All information, plans and specifications are current at the time of print and are subject to changes as may be required or approved by the developer and/or the relevant authorities.



