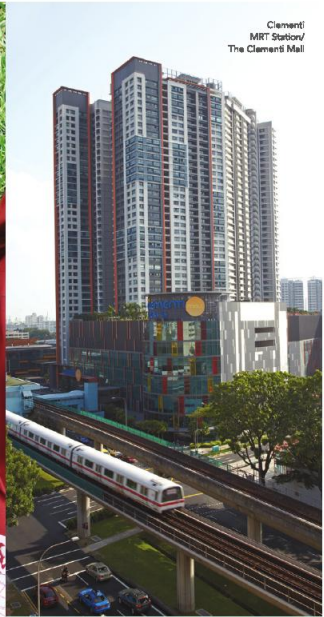


THE  
triling  
御品居



**WHERE HOME IS THE SUM OF LIFE'S BEST CHOICES.**

For a truly personal experience, The Triling comes with three enticing lifestyle zones to complement your own approach to living. Equally compelling is its distinctive design language – full of contemporary lines blended with touches of green. For someone used to making the right decisions, it is simply a natural choice.



Your family matters, of course. With the prestigious Nan Hua Primary School just next door and a whole list of well-regarded educational institutions, from pre-schools to institutes of higher learning, a short distance away, the education needs of your loved ones will be truly well taken care of.



## THREE DISTINCTIVE LIFESTYLE EXPERIENCES TO PIQUE YOUR INTEREST.

The Triling features three distinct blocks, each with its own integral activity zone, designed to cater to the different preferences and lifestyles of residents. Named VANTAGE, OASIS and ACTIVA, they offer a varied set of options for you to enjoy, but retain a cohesive theme that you will instantly identify with The Triling.



VANTAGE

OASIS

ACTIVA

Artist's Impression

Artist's Impression

Artist's Impression

## SITE PLAN



## LEGEND

### THE ENTRANCE

- 1 Drop-Off
- 2 Water Plaza
- 3 Guard House
- 4 Secondary Vehicular Exit
- 5 Side Entrance

### OASIS ZONE

- 6 Reflective Waters (The Oasis)
- 7 Floating Pavilion
- 8 Pine Forest Trail
- 9 Tea House
- 10 Oasis Spa
- 11 Contemplative Maze
- 12 Rockery Fernery
- 13 Green Pod

### ACTIVA ZONE

- 14 Lap Pool (40m length)
- 15 Fitness Zone
- 16 Contemplative Pavilion
- 17 Garden Plaza
- 18 Tennis Court
- 19 Children Clubland
- 20 Activa Pavilion (BBQ/Grill)

### THE CENTRAL

- 21 Crystal Pool (50m length)
- 22 Clubhouse
  - a. Function Rooms
  - b. Indoor Gym
  - c. Changing Rooms
- 23 The Jogging Trail
- 24 Grill Gardens (BBQ)
- 25 Club Pavilion
- 26 Pool Cabana
- 27 Crater Spa
- 28 Water Play
- 29 Children Wading Pool
- 30 Pool Pavilion
- 31 Green Island
- 32 Outdoor Lounge

### VANTAGE ZONE

- 33 Party Pool
- 34 Water Garden Haven
- 35 Party Lawn
- 36 Vantage Pavilion (BBQ/Grill)
- 37 Water Cascade

### SKY TERRACES

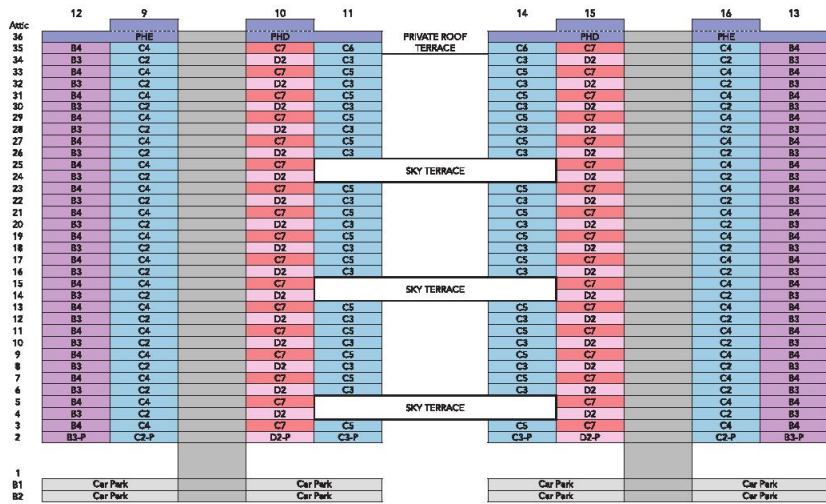
- 38 Vantage Tower (4th / 14th / 24th Storey)
- 39 Activa Tower (4th / 14th / 24th Storey)
- 40 Oasis Tower (14th / 24th Storey)

# UNIT DISTRIBUTION CHART

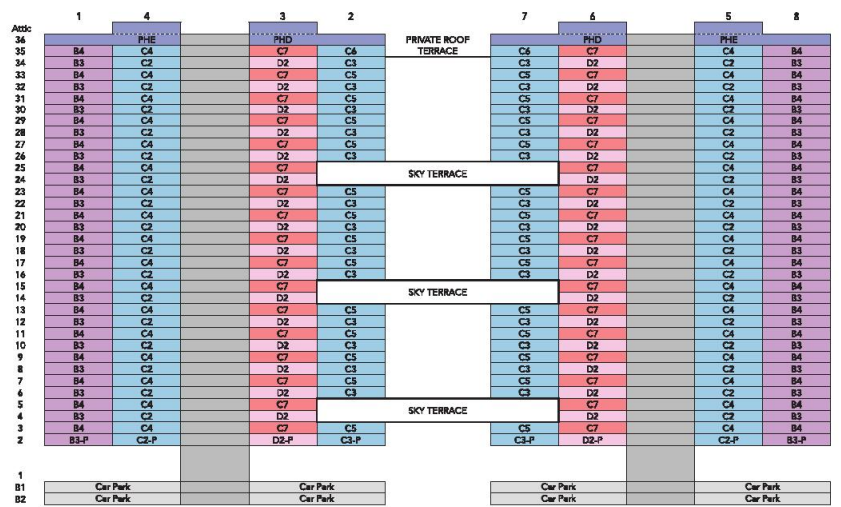
## LEGEND

- 1-BEDROOM
- 2-BEDROOM
- 3-BEDROOM
- 3-BEDROOM + STUDY
- 4-BEDROOM
- PENTHOUSE

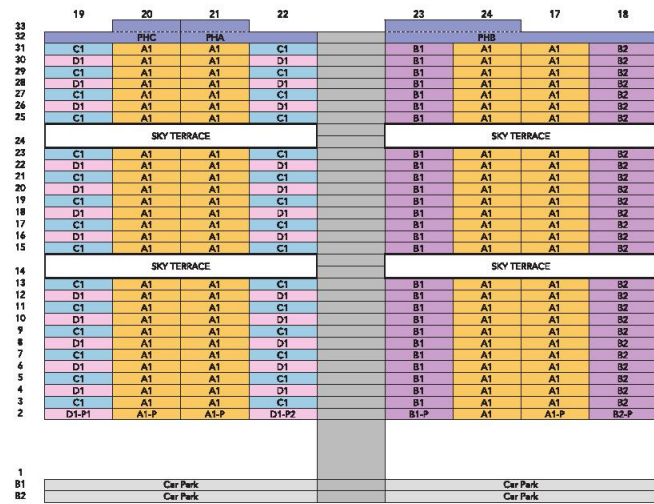
### ACTIVA 28A Jalan Lempeng S(128808)



### VANTAGE 28 Jalan Lempeng S(128807)



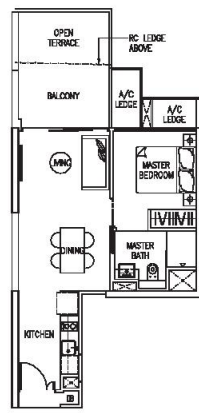
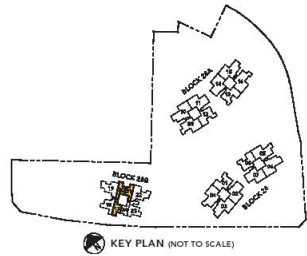
### OASIS 28B Jalan Lempeng S(128809)



## 1-BEDROOM - TYPE A1-P

56 sq m / 603 sq ft

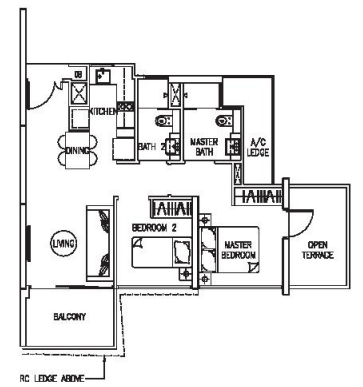
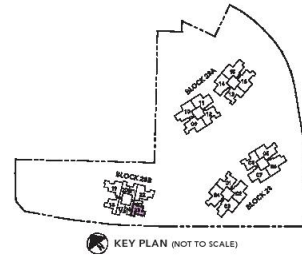
UNIT (MIRROR)	UNIT	UNIT (MIRROR)
#02-17	#02-20	#02-21



## 2-BEDROOM - TYPE B1-P

72 sq m / 775 sq ft

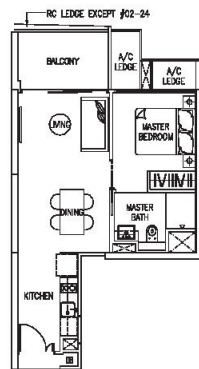
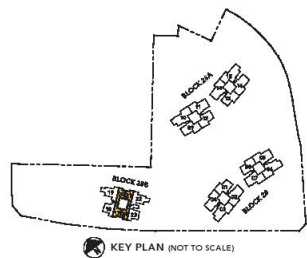
UNIT  
#02-23



## 1-BEDROOM - TYPE A1

50 sq m / 538 sq ft

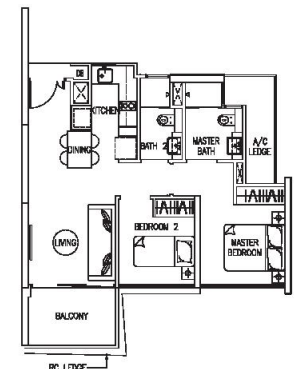
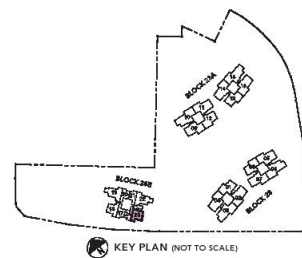
UNIT (MIRROR)	UNIT	UNIT (MIRROR)	UNIT
#03-17 to #13-17, #15-17 to #23-17, #25-17 to #31-17.	#03-20 to #13-20, #15-20 to #23-20, #25-20 to #31-20.	#03-21 to #13-21, #15-21 to #23-21, #25-21 to #31-21.	#02-24 to #13-24, #15-24 to #23-24, #25-24 to #31-24.



## 2-BEDROOM - TYPE B1

65 sq m / 700 sq ft

UNIT  
#03-23 to #13-23,  
#15-23 to #23-23,  
#25-23 to #31-23.



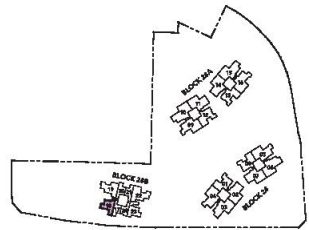
Plans are subject to any amendment as may be approved by the relevant authorities. All floor areas are approximate and are subject to final survey.

Plans are subject to any amendment as may be approved by the relevant authorities. All floor areas are approximate and are subject to final survey.

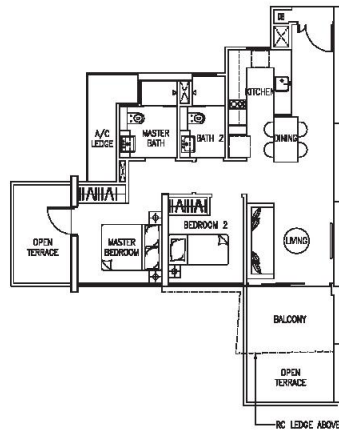
## 2-BEDROOM - TYPE B2-P

83 sq m / 893 sq ft

UNIT  
#02-18



KEY PLAN (NOT TO SCALE)



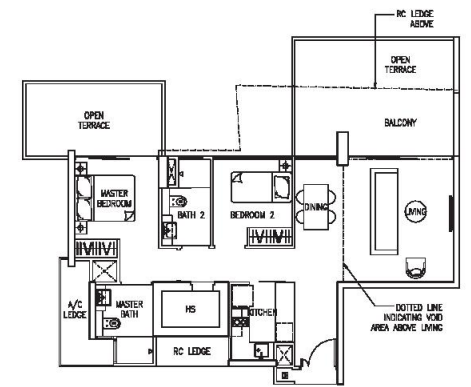
## 2-BEDROOM - TYPE B3-P

124 sq m / 1,335 sq ft

UNIT (MIRROR) UNIT UNIT UNIT (MIRROR)  
#02-01 #02-08 #02-12 #02-13



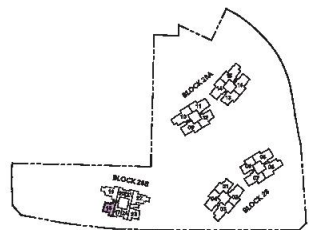
KEY PLAN (NOT TO SCALE)



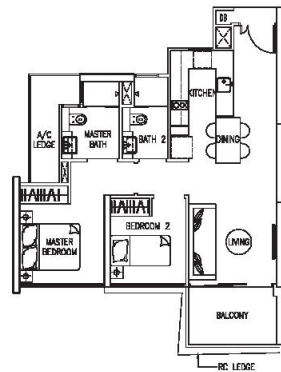
## 2-BEDROOM - TYPE B2

70 sq m / 753 sq ft

UNIT  
#03-18 to #13-18,  
#15-18 to #23-18,  
#25-18 to #31-18.



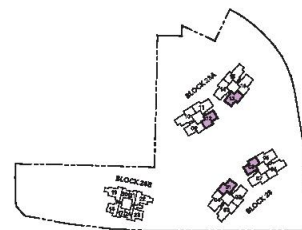
KEY PLAN (NOT TO SCALE)



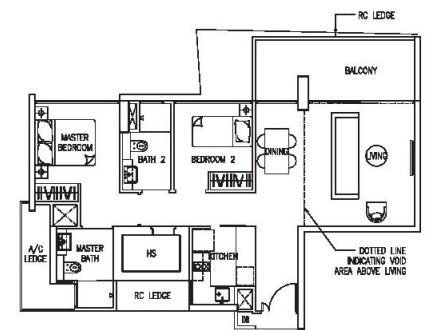
## 2-BEDROOM - TYPE B3

103 sq m / 1,109 sq ft

UNIT (MIRROR) UNIT UNIT UNIT (MIRROR)  
#04-01 #20-01 #04-08 #20-08 #04-12 #20-12 #04-13 #20-13  
#06-01 #22-01 #06-08 #22-08 #06-12 #22-12 #06-13 #22-13  
#08-01 #24-01 #08-08 #24-08 #08-12 #24-12 #08-13 #24-13  
#10-01 #26-01 #10-08 #26-08 #10-12 #26-12 #10-13 #26-13  
#12-01 #28-01 #12-08 #28-08 #12-12 #28-12 #12-13 #28-13  
#14-01 #30-01 #14-08 #30-08 #14-12 #30-12 #14-13 #30-13  
#16-01 #32-01 #16-08 #32-08 #16-12 #32-12 #16-13 #32-13  
#18-01 #34-01 #18-08 #34-08 #18-12 #34-12 #18-13 #34-13



KEY PLAN (NOT TO SCALE)



Plans are subject to any amendment as may be approved by the relevant authorities. All floor areas are approximate and are subject to final survey.

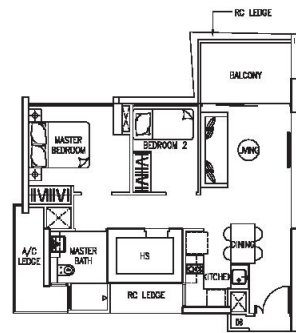
Plans are subject to any amendment as may be approved by the relevant authorities. All floor areas are approximate and are subject to final survey.



## 2-BEDROOM - TYPE B4

66 sq m / 710 sq ft

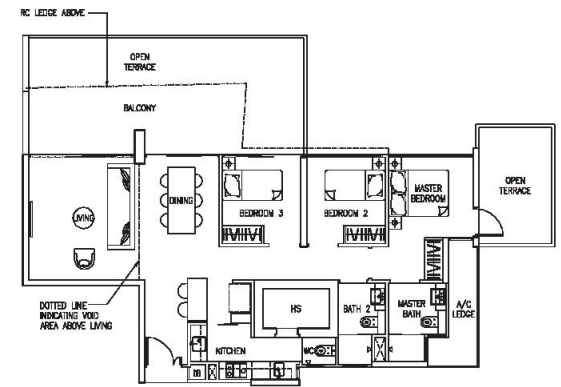
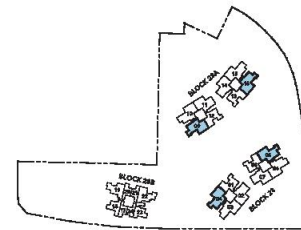
UNIT (MIRROR)	UNIT	UNIT	UNIT (MIRROR)
#03-01	#21-01	#03-08	#21-08
#03-01	#23-01	#05-08	#23-08
#07-01	#25-01	#07-08	#25-08
#09-01	#27-01	#09-08	#27-08
#11-01	#29-01	#11-08	#29-08
#13-01	#31-01	#13-08	#31-08
#15-01	#33-01	#15-08	#33-08
#17-01	#35-01	#17-08	#35-08
#19-01		#19-08	#19-12
			#19-13



## 3-BEDROOM - TYPE C2-P

158 sq m / 1,701 sq ft

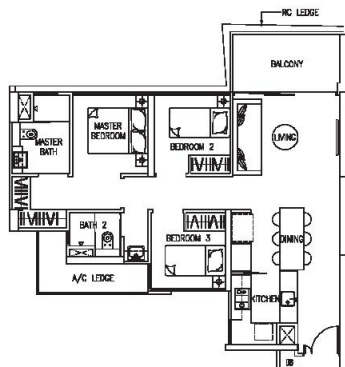
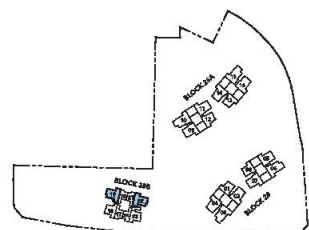
UNIT (MIRROR)	UNIT	UNIT	UNIT (MIRROR)
#02-04	#02-05	#02-09	#02-16



## 3-BEDROOM - TYPE C1

85 sq m / 915 sq ft

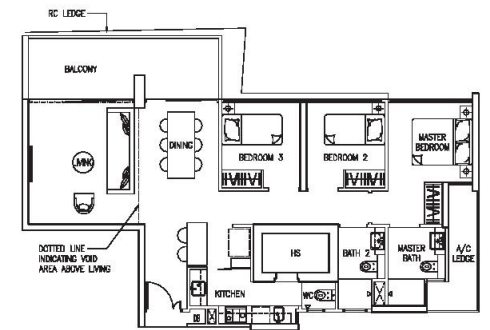
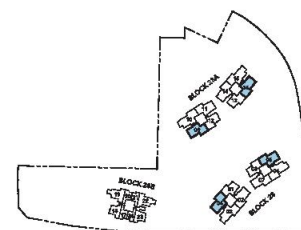
UNIT	UNIT (MIRROR)
#03-19	#19-19
#05-19	#21-19
#07-19	#23-19
#09-19	#25-19
#11-19	#27-19
#13-19	#29-19
#15-19	#31-19
#17-19	



## 3-BEDROOM - TYPE C2

125 sq m / 1,346 sq ft

UNIT (MIRROR)	UNIT	UNIT	UNIT (MIRROR)
#04-04	#20-04	#04-05	#20-05
#06-04	#22-04	#06-05	#22-05
#08-04	#24-04	#08-05	#24-05
#10-04	#26-04	#10-05	#26-05
#12-04	#28-04	#12-05	#28-05
#14-04	#30-04	#14-05	#30-05
#16-04	#32-04	#16-05	#32-05
#18-04	#34-04	#18-05	#34-05



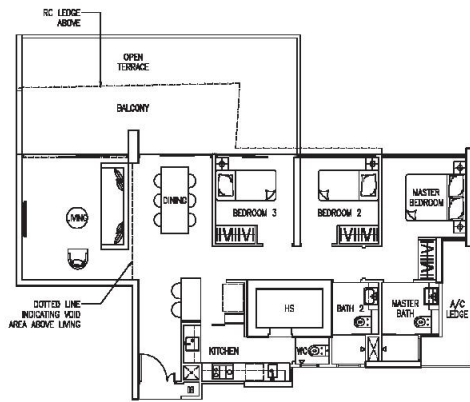
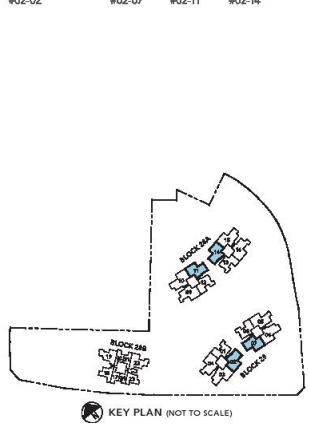
Plans are subject to any amendment as may be approved by the relevant authorities. All floor areas are approximate and are subject to final survey.

Plans are subject to any amendment as may be approved by the relevant authorities. All floor areas are approximate and are subject to final survey.

### 3-BEDROOM - TYPE C3-P

149 sq m / 1,604 sq ft

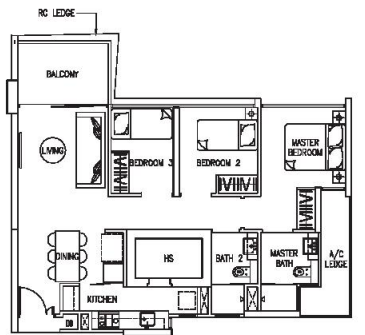
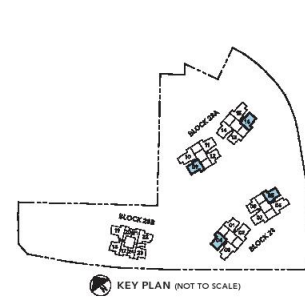
UNIT (MIRROR)	UNIT	UNIT	UNIT (MIRROR)
#02-02	#02-07	#02-11	#02-14



### 3-BEDROOM - TYPE C4

85 sq m / 915 sq ft

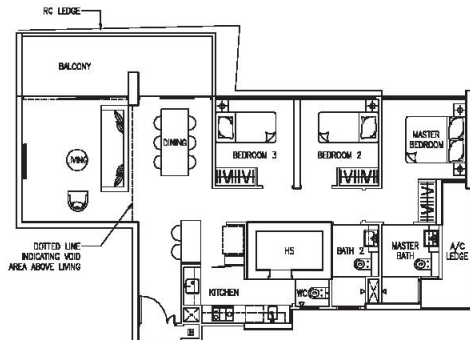
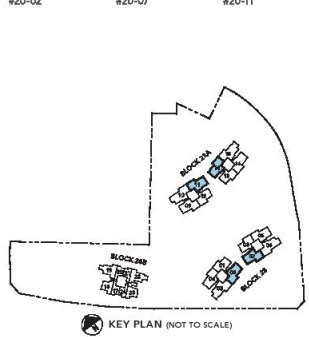
UNIT (MIRROR)	UNIT	UNIT	UNIT (MIRROR)
#03-04	#21-04	#03-05	#21-05
#05-04	#23-04	#05-05	#23-05
#07-04	#25-04	#07-05	#25-05
#09-04	#27-04	#09-05	#27-05
#11-04	#29-04	#11-05	#29-05
#13-04	#31-04	#13-05	#31-05
#15-04	#33-04	#15-05	#33-05
#17-04	#35-04	#17-05	#35-05
#19-04		#19-05	
		#03-09	#21-09
		#05-09	#23-09
		#07-09	#25-09
		#09-09	#27-09
		#11-09	#29-09
		#13-09	#31-09
		#15-09	#33-09
		#17-09	#35-09
		#19-09	
			#03-16
			#05-16
			#07-16
			#09-16
			#11-16
			#13-16
			#15-16
			#17-16
			#19-16



### 3-BEDROOM - TYPE C3

126 sq m / 1,356 sq ft

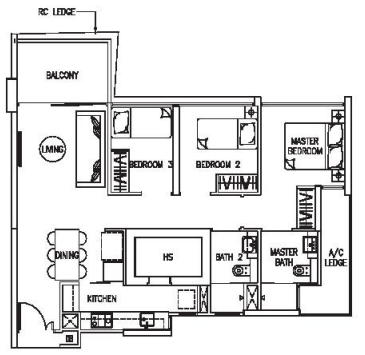
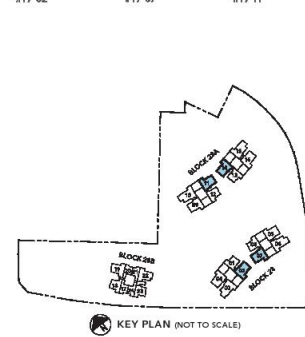
UNIT (MIRROR)	UNIT	UNIT	UNIT (MIRROR)
#06-02	#22-02	#06-07	#22-07
#08-02	#24-02	#08-07	#24-07
#10-02	#26-02	#10-07	#26-07
#12-02	#28-02	#12-07	#28-07
#14-02	#30-02	#14-07	#30-07
#16-02	#32-02	#16-07	#32-07
#18-02	#34-02	#18-07	#34-07
#20-02		#20-07	
		#06-11	#22-11
		#08-11	#24-11
		#10-11	#26-11
		#12-11	#28-11
		#14-11	#30-11
		#16-11	#32-11
		#18-11	#34-11
		#20-11	
			#06-14
			#08-14
			#10-14
			#12-14
			#14-14
			#16-14
			#18-14
			#20-14



### 3-BEDROOM - TYPE C5

87 sq m / 936 sq ft

UNIT (MIRROR)	UNIT	UNIT	UNIT (MIRROR)
#03-02	#21-02	#03-07	#21-07
#07-02	#23-02	#07-07	#23-07
#09-02	#25-02	#09-07	#25-07
#11-02	#27-02	#11-07	#27-07
#13-02	#29-02	#13-07	#29-07
#15-02	#31-02	#15-07	#31-07
#17-02	#33-02	#17-07	#33-07
#19-02		#19-07	
		#03-11	#21-11
		#07-11	#23-11
		#09-11	#25-11
		#11-11	#27-11
		#13-11	#29-11
		#15-11	#31-11
		#17-11	#33-11
		#19-11	
			#03-14
			#07-14
			#09-14
			#11-14
			#13-14
			#15-14
			#17-14
			#19-14



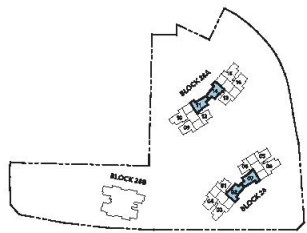
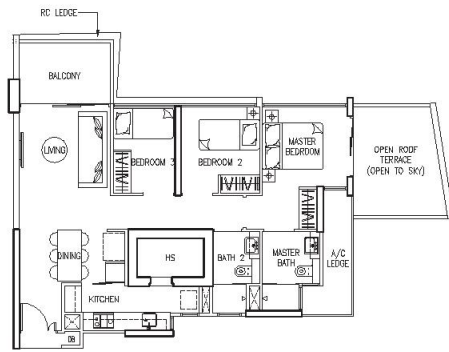
Plans are subject to any amendment as may be approved by the relevant authorities. All floor areas are approximate and are subject to final survey.

Plans are subject to any amendment as may be approved by the relevant authorities. All floor areas are approximate and are subject to final survey.

### 3-BEDROOM - TYPE C6

98 sq m / 1,055 sq ft

UNIT (MIRROR)	UNIT	UNIT	UNIT (MIRROR)
#35-02	#35-07	#35-11	#35-14



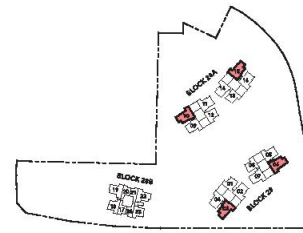
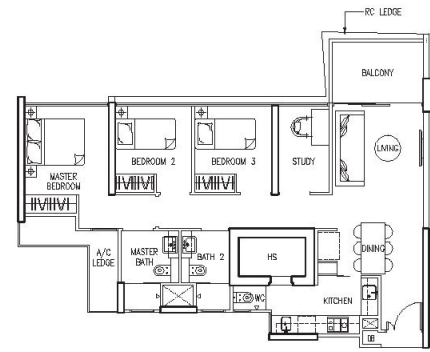
KEY PLAN (NOT TO SCALE)

Plans are subject to any amendment as may be approved by the relevant authorities. All floor areas are approximate and are subject to final survey.

### 3-BEDROOM + STUDY - TYPE C7

97 sq m / 1,044 sq ft

UNIT (MIRROR)	UNIT	UNIT	UNIT (MIRROR)
#03-03	#21-03	#03-06	#21-06
#05-03	#23-03	#05-06	#23-06
#07-03	#25-03	#07-06	#25-06
#09-03	#27-03	#09-06	#27-06
#11-03	#29-03	#11-06	#29-06
#13-03	#31-03	#13-06	#31-06
#15-03	#33-03	#15-06	#33-06
#17-03	#35-03	#17-06	#35-06
#19-03		#19-06	
		#03-10	#21-10
		#05-10	#23-10
		#07-10	#25-10
		#09-10	#27-10
		#11-10	#29-10
		#13-10	#31-10
		#15-10	#33-10
		#17-10	#35-10
		#19-10	
		#03-15	#21-15
		#05-15	#23-15
		#07-15	#25-15
		#09-15	#27-15
		#11-15	#29-15
		#13-15	#31-15
		#15-15	#33-15
		#17-15	#35-15
		#19-15	



KEY PLAN (NOT TO SCALE)

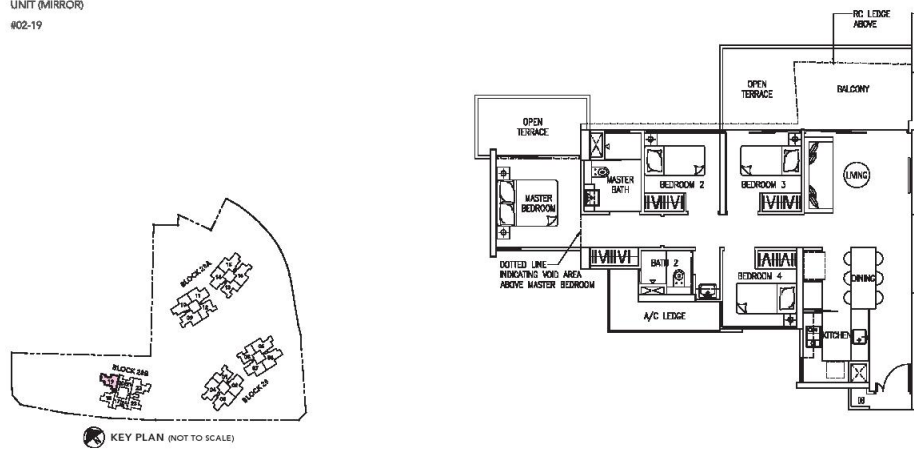
Plans are subject to any amendment as may be approved by the relevant authorities. All floor areas are approximate and are subject to final survey.



4-BEDROOM - TYPE D1-P1

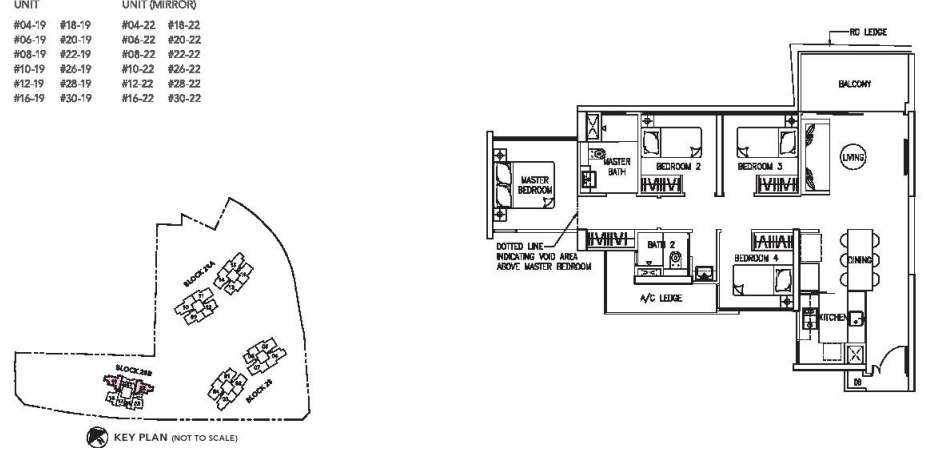
121 sq m / 1,302 sq ft

UNIT (MIRROR)  
#02-19



103 sq m / 1,109 sq ft

UNIT UNIT (MIRROR)  
#04-19 #18-19 #04-22 #18-22  
#06-19 #20-19 #06-22 #20-22  
#08-19 #22-19 #08-22 #22-22  
#10-19 #26-19 #10-22 #26-22  
#12-19 #28-19 #12-22 #28-22  
#16-19 #30-19 #16-22 #30-22

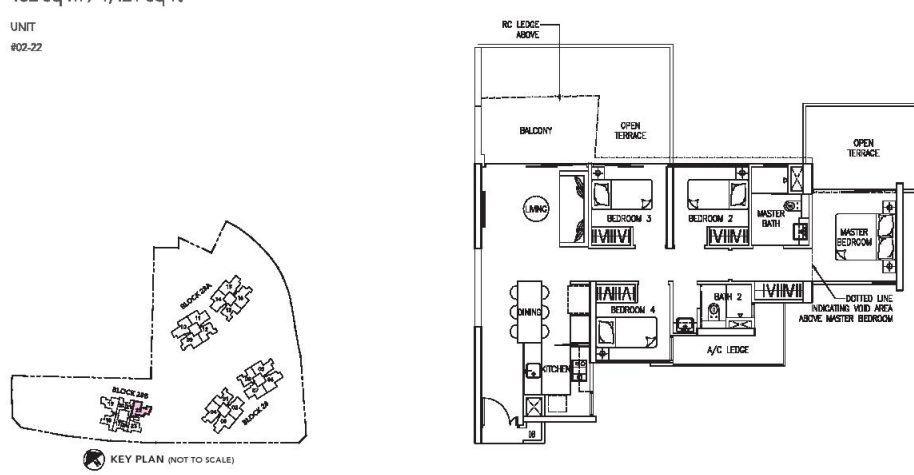


4-BEDROOM - TYPE D1

4-BEDROOM - TYPE D1-P2

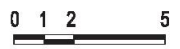
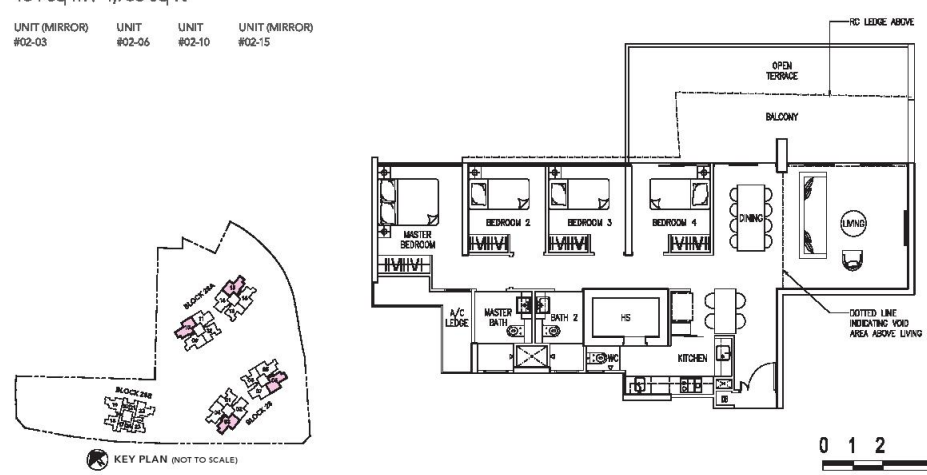
132 sq m / 1,421 sq ft

UNIT  
#02-22



164 sq m / 1,765 sq ft

UNIT (MIRROR) UNIT UNIT UNIT (MIRROR)  
#02-03 #02-06 #02-10 #02-15



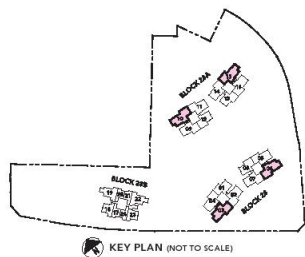
Plans are subject to any amendment as may be approved by the relevant authorities. All floor areas are approximate and are subject to final survey.

Plans are subject to any amendment as may be approved by the relevant authorities. All floor areas are approximate and are subject to final survey.

## 4-BEDROOM - TYPE D2

141 sq m / 1,518 sq ft

UNIT (MIRROR)	UNIT	UNIT	UNIT (MIRROR)
#04-03	#20-03	#04-06	#20-06
#06-03	#22-03	#06-06	#22-06
#08-03	#24-03	#08-06	#24-06
#10-03	#26-03	#10-06	#26-06
#12-03	#28-03	#12-06	#28-06
#14-03	#30-03	#14-06	#30-06
#16-03	#32-03	#16-06	#32-06
#18-03	#34-03	#18-06	#34-06
#04-10	#20-10	#04-15	#20-15
#06-10	#22-10	#06-15	#22-15
#08-10	#24-10	#08-15	#24-15
#10-10	#26-10	#10-15	#26-15
#12-10	#28-10	#12-15	#28-15
#14-10	#30-10	#14-15	#30-15
#16-10	#32-10	#16-15	#32-15
#18-10	#34-10	#18-15	#34-15



Plans are subject to any amendment as may be approved by the relevant authorities. All floor areas are approximate and are subject to final survey.



## IOI GROUP

### ABOUT IOI GROUP

Founded in 1969, IOI Group forayed into property development and oil palm plantations in the early 1980s and has since become Malaysia's leading name in both real estate development and property investment, as well as global integrated palm oil cultivation and resource-based manufacturing. IOI Group was ranked 1119th amongst Forbes Magazine's Forbes Global 2000 companies in 2012.

IOI Properties is one of Malaysia's leading property developers with projects across the country as well as in Singapore and China. With experience spanning four decades, IOI Properties' developments range from residential, commercial, leisure and hospitality components to niche and integrated developments.

With its good track records and strong foothold in developing integrated townships in Malaysia, IOI Properties has been consistently ranked amongst Malaysia Top Ten Property Developers between 2003 to 2011. The organisation was also placed on the list of BCI Asia Top Ten Developers Awards for 2011 and 2012.

For more information, please visit us at:  
[www.ioigroup.com](http://www.ioigroup.com)  
[www.ioiproperties.com.my](http://www.ioiproperties.com.my)

### Projects in Singapore

**Seascope, Sentosa Cove**  
 The Group partnered with Ho Bee Investments Limited to develop Seascope (comprising of 151 exclusive waterfront homes), which offers breath-taking sea views of the Southern Islands and the South China Sea. Completed in 2010, Seascope won the prestigious FIABCI-Singapore Singapore Property Awards in the Residential (Low Rise) Category in 2012.

### The Pinnacle Collection, Sentosa Cove

The Pinnacle Collection in the premium residential enclave of Sentosa Cove is also jointly developed by the Group and Ho Bee Investments Limited. This upcoming development (comprising of 302 luxurious appointed units) will feature an iconic condominium of up to 20 storeys, flanking the entrance of the marina leading into Sentosa Cove.

### Cityscape @ Farrer Park

The Group also partnered with Kim Seng Heng Realty Pte Ltd to develop Cityscape @ Farrer Park, a 30-storey freehold condominium development (comprising of 250 contemporary urban homes) in District 8, within close proximity to Orchard Road and the Central Business District.

### South Beach

Another prestigious project undertaken by the Group is South Beach, a mixed-use development, jointly developed with City Developments Limited. It is strategically located on Beach Road and bordering the Central Business District.

Four existing historic buildings on site will be seamlessly blended with two new towers to feature Grade A offices, 190 luxury residences, a designer hotel (with 650 rooms), retail spaces and a members-only Arts club.

With a distinctive design including a state-of-the-art environmental canopy, South Beach has won two Green Mark Platinum Awards and is set to be the new defining structure in Singapore's vibrant skyline when completed in 2015.



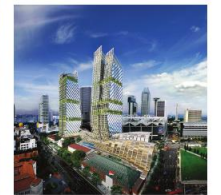
Seascope, Sentosa Cove



The Pinnacle Collection, Sentosa Cove



Cityscape @ Farrer Park



South Beach

Developed by:



Developer: Clement Development Pte Ltd • Co. Reg. No.: 201204688M • Developer's Licence No.: C1014 • Term of Land: 99 years w.o.L. 18 Apr 2012 • Legal Description: Lot 875&K MK 05 at Jalan Lampung • Expected Date of Vacant Possession: 18 Apr 2017 • Expected Date of Legal Completion: 18 Apr 2020 or 3 years after notice of vacant possession whichever is earlier • Building Plan No.: A1557-02005-2012 30'01 dated: 9 Jun 2013

While every reasonable care has been taken in preparing this brochure and in constructing the models and showflats, the Vendor/Developer and its Marketing Agent(s) cannot be held responsible for any inaccuracies or omissions. Visual representations, models, showflat displays and illustrations, photographs, art renderings and other graphic representations and references are intended to portray only artist's impressions of the development and cannot be regarded as representations of fact. Floor areas are approximate measurements and are subject to final survey. The property is subject to final inspection by the relevant authorities to comply with the current codes of practice.

All information, specifications, renderings, visual representations and plans are correct at the time of publication and are subject to changes as may be required by us and/or the competent authorities and shall not form part of any offer or contract nor constitute any warranty by us and shall not be regarded as statements or representations of fact.

All facts are subject to amendments as directed and/or approved by the building authorities. All areas are approximate measurements only and subject to final survey. The Sale and Purchase Agreement shall form the entire agreement between us as the Vendor/Developer and the Purchaser and shall supersede all statements, representations and/or promises made prior to the signing of the Sale and Purchase Agreement and shall in no way be modified by any statements, representations or promises made by the Vendor/Developer and/or the Marketing Agents.

