



[www.pollenbleu.com](http://www.pollenbleu.com)

# POLLEN & Bleu

FLOOR PLANS



Live. Joy.



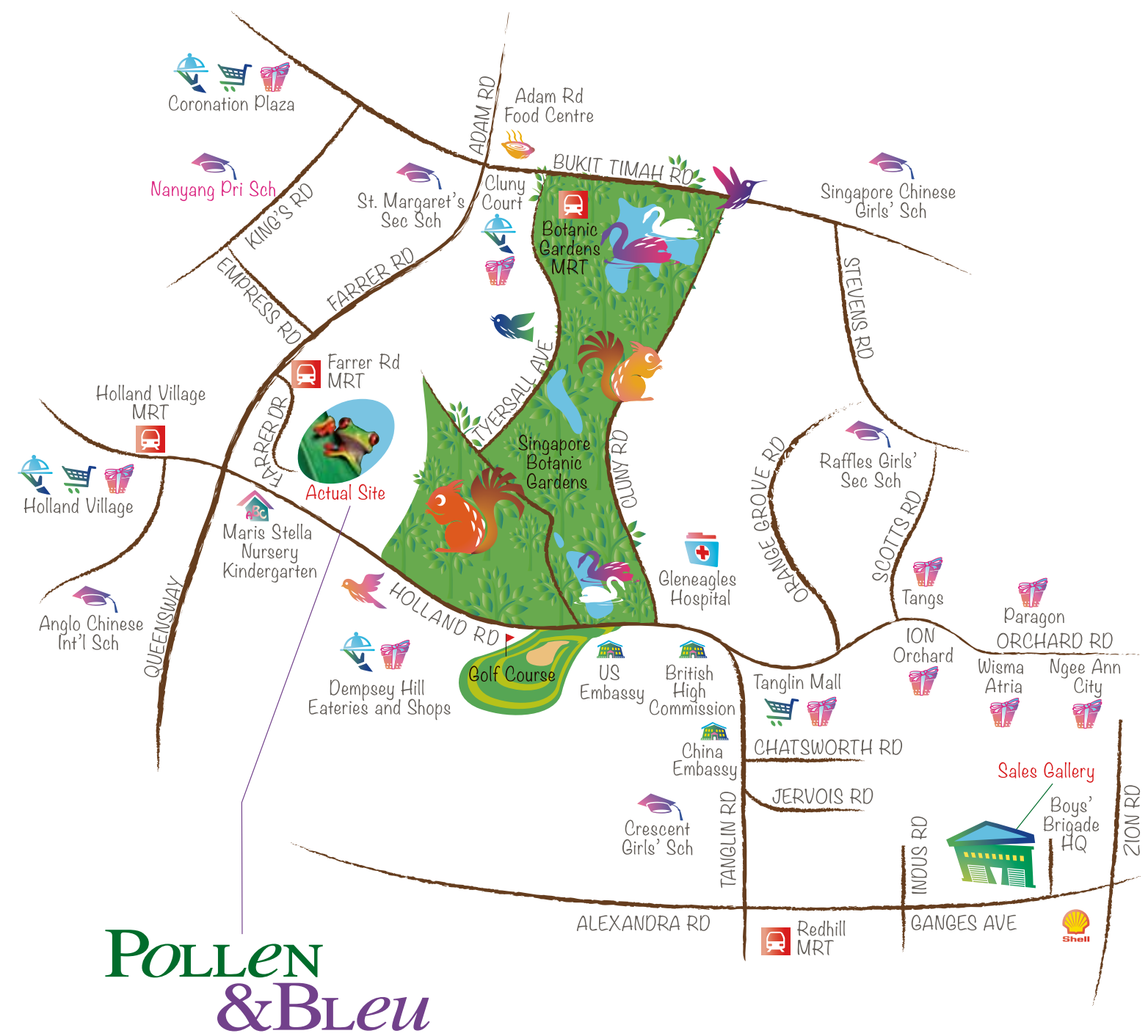
24 Raffles Place #22-01/06 Clifford Centre Singapore 048621 Tel: (65) 6220 1352 / 6222 9312 Fax: (65) 6224 0278 / 6223 9056

Developer: Singland Development (Farrer Drive) Pte Ltd (Co. Reg -201202541W) • Developer's License No: C1077 • Tenure of Land: 99 years • Location: Lot 99581P MK 02 at Farrer Drive • Expected Date of Vacant Possession: 14 September 2018 • Expected Date of Legal Completion: 14 September 2021

While reasonable care has been taken in the preparation of this brochure and the plans attached, the developer and/or its agents shall not be held responsible for any inaccuracies or omissions therein. All visual representations including architectural models, drawings, illustrations, photographs, renderings and other graphic representations portray artist's impressions only and not to be relied upon as statements or representations of fact. All floor areas are approximate measurements only and are subject to final survey. The materials and finishings to be used are subject to changes and availability. All information and specifications are current at the time of publication and are subject to change as may be required and do not form part of an offer or contract. The Sale & Purchase Agreement shall form the entire agreement between the developer and the purchaser, and shall in no way be modified by any statements or representations whether contained in this brochure or given by the developer's agents or otherwise.



Tucked away in tranquil Farrer Drive in District 10 is this special place where imagination comes alive.



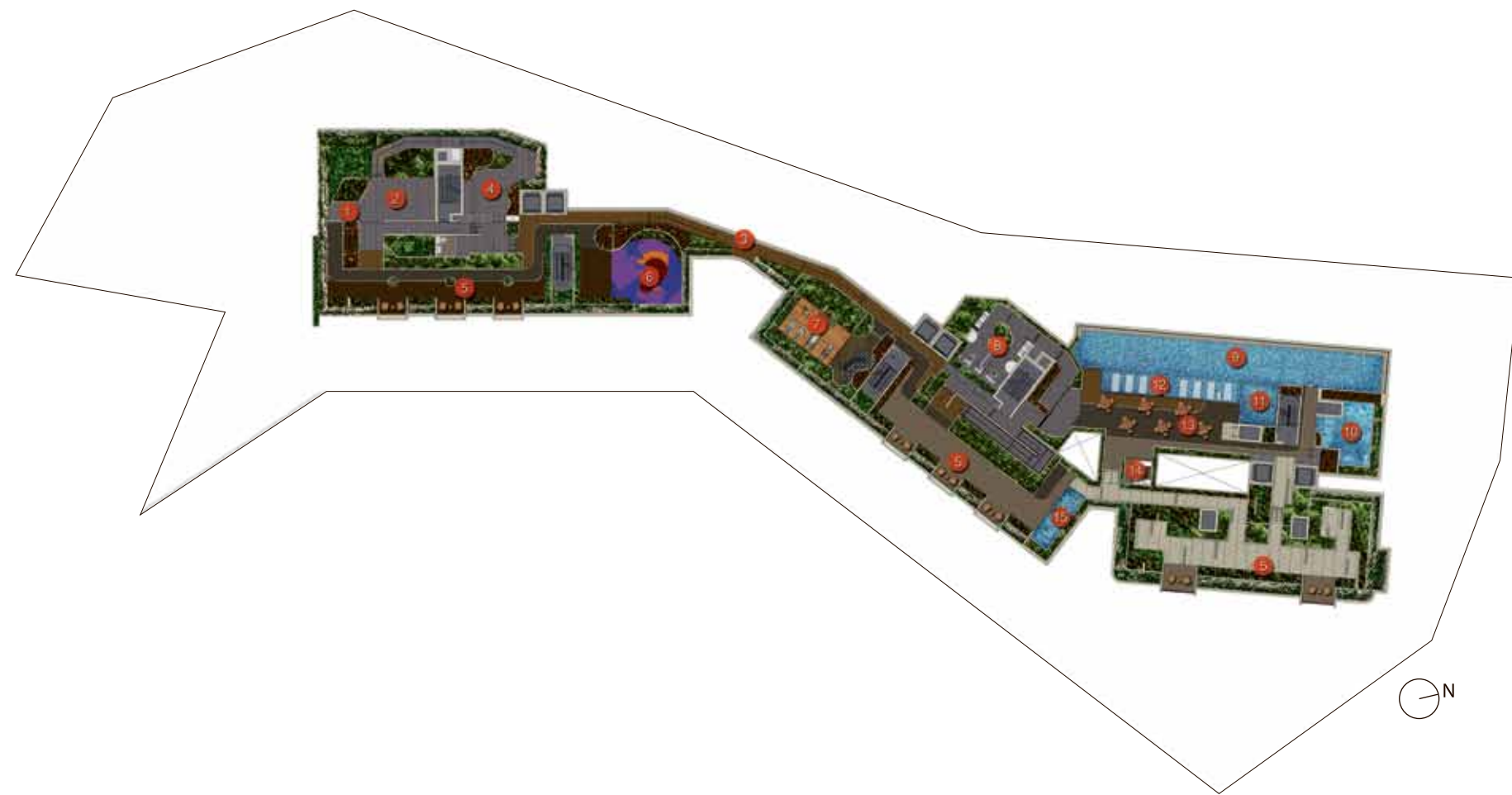
## the secret garden – 1st storey

1. Children's Playground
2. Fitness Station
3. BBQ Pavilion
4. Courtyard Garden
5. Rock Garden
6. Seating Alcove
7. Trellis
8. Water Feature
9. Focal Sculpture
10. Drop Off
11. Guard House



# the floating garden – 4th storey

- 1. Viewing Deck 2. Function Deck 3. Viewing Bridge 4. Sunken Sunset Lounge 5. Sky Terrace 6. Children Play Berm With Slide 7. Gymnasium Room 8. Changing Room 9. Infinity Edge Lap Pool 10. Kids' Pool 11. Jacuzzi Pool 12. Shallow Water Deck 13. Pool Side Dining Lounge 14. Pool Bar 15. Water Feature



# the enchanted garden – roof top

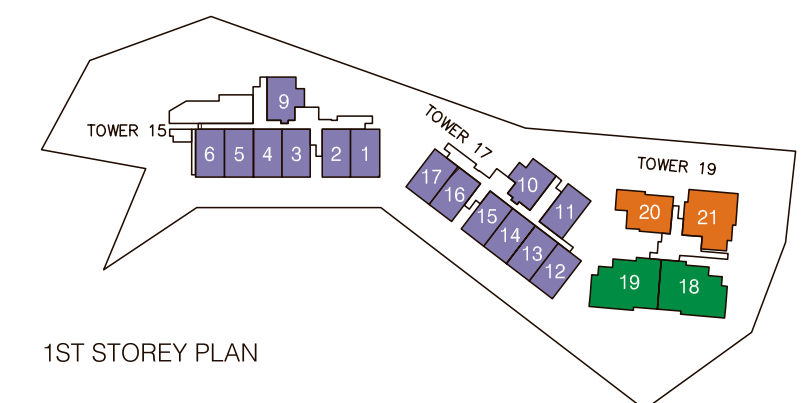
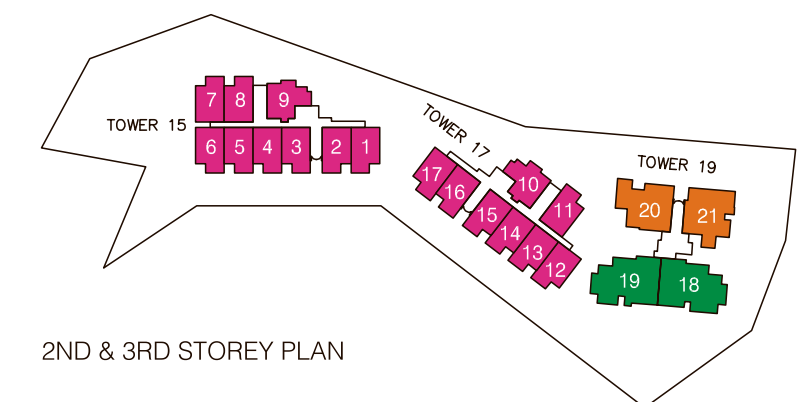
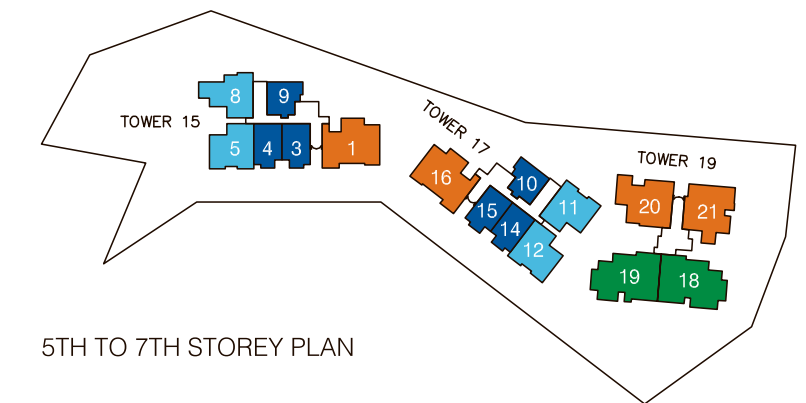
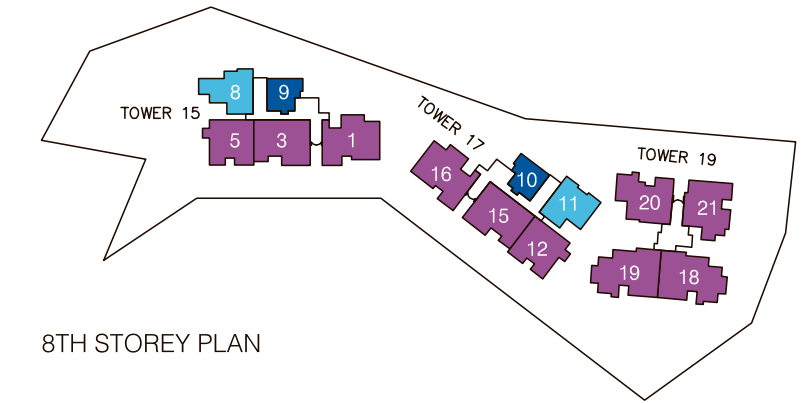
- 1. Viewing Deck 2. Viewing Bridge



# schematic diagram

UNIT LEVEL	TOWER 15									TOWER 17							TOWER 19				
	#01	#02	#03	#04	#05	#06	#07	#08	#09	#10	#11	#12	#13	#14	#15	#16	#17	#18	#19	#20	#21
ATTIC	SKY TERRACE																				
8	PH5 08-01	PH4 08-03		PH1 08-05		B2 08-08			A1 08-09	A1 08-10	B1 08-11	PH1 08-12		PH4 08-15		PH5 08-16		PH6 08-18	PH6 08-19	PH2 08-20	PH3 08-21
7	C1(b) 07-01	A2 07-03	A2 07-04	B1 07-05		B2 07-08			A1 07-09	A1 07-10	B1 07-11	B1 07-12		A2 07-14	A2 07-15	C1(b) 07-16		D(b2) 07-18	D(b1) 07-19	C2(b1) 07-20	C3(b2) 07-21
6	C1(b) 06-01	A2 06-03	A2 06-04	B1 06-05		B2 06-08			A1 06-09	A1 06-10	B1 06-11	B1 06-12		A2 06-14	A2 06-15	C1(b) 06-16		D(b1) 06-18	D(b2) 06-19	C2(b2) 06-20	C3(b1) 06-21
5	C1(b) 05-01	A2 05-03	A2 05-04	B1 05-05		B2 05-08			A1 05-09	A1 05-10	B1 05-11	B1 05-12		A2 05-14	A2 05-15	C1(b) 05-16		D(b2) 05-18	D(b1) 05-19	C2(b1) 05-20	C3(b2) 05-21
4	SKY TERRACE																				
3																	D(b2) 03-18	D(b1) 03-19	C2(b1) 03-20	C3(b2) 03-21	
2	LF1 02-01	LF1 02-02	LF1 02-03	LF1 02-04	LF1 02-05	LF1 02-06	LF1 02-07	LF1 02-08	LF2 02-09	LF2 02-10	LF1 02-11	LF1 02-12	LF1 02-13	LF1 02-14	LF1 02-15	LF1 02-16	LF1 02-17	D(b1) 02-18	D(b2) 02-19	C2(b2) 02-20	C3(b1) 02-21
1	SH1 01-01	SH1 01-02	SH1 01-03	SH1 01-04	SH1 01-05	SH1 01-06			SH2 01-09	SH2 01-10	SH1 01-11	SH1 01-12	SH1 01-13	SH1 01-14	SH1 01-15	SH1 01-16	SH1 01-17	D(p) 01-18	D(p) 01-19	C2(p) 01-20	C3(p) 01-21
B1	CARPARK									CARPARK							CARPARK				

■ GARDEN TERRASSE ■ ATELIER LOFT ■ 1-BEDROOM/1-BEDROOM + STUDY ■ 2-BEDROOM ■ 3-BEDROOM  
■ 4-BEDROOM ■ PENTHOUSE



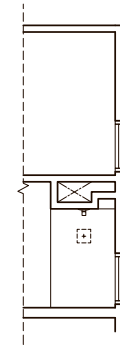
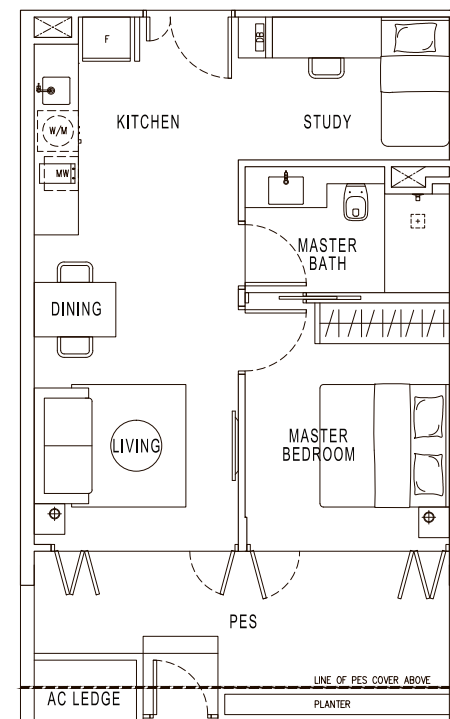
# GARDEN TERRASSE

## TYPE SH1

Area 65 sqm / 700 sqft

#01-01 to #01-02  
#01-12 to #01-15

(Mirrored)  
#01-03 to #01-06  
#01-11, #01-16 to #01-17



WINDOW VARIATION ON CORNER UNITS

# 01-01  
# 01-12  
(MIRRORED)  
# 01-11, # 01-17

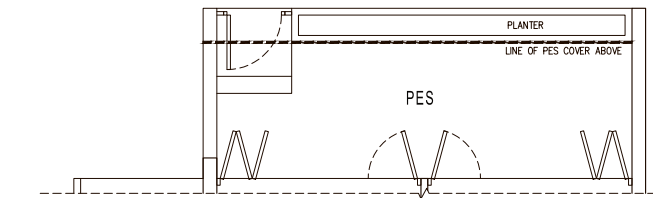
# GARDEN TERRASSE

## TYPE SH2

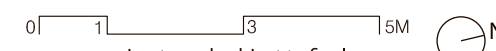
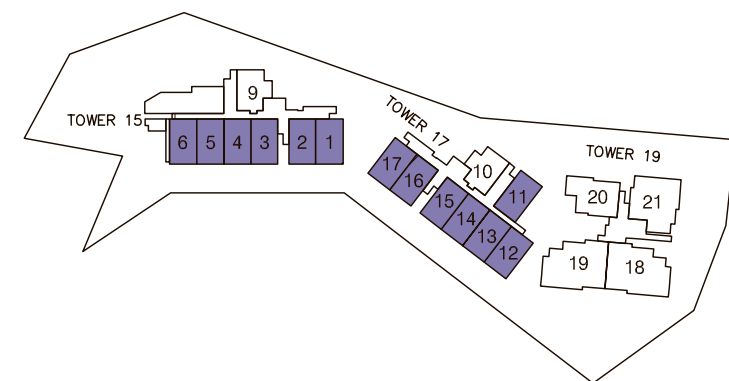
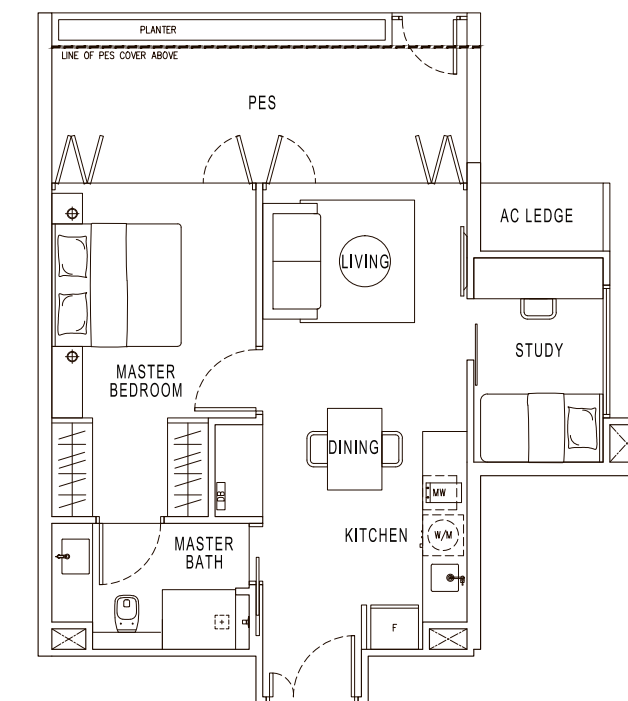
Area 68 sqm / 732 sqft

#01-09

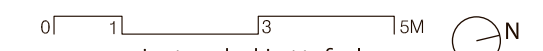
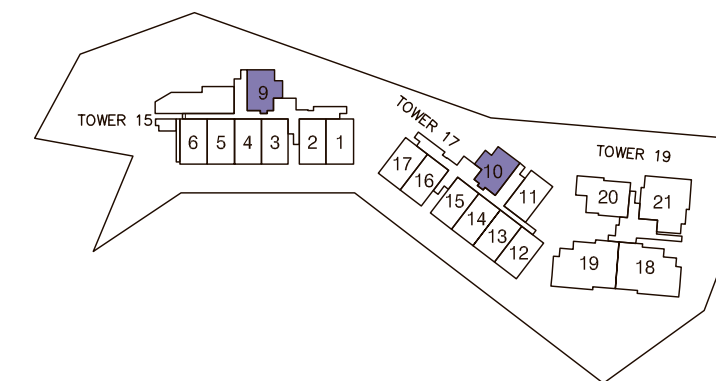
(Mirrored)  
#01-10



PES VARIATION  
TOWER 15 # 01-10



Plans are not drawn to scale and are subject to amendments as may be required or approved by the relevant authorities. All floor areas are approximate and subject to final survey.



Plans are not drawn to scale and are subject to amendments as may be required or approved by the relevant authorities. All floor areas are approximate and subject to final survey.

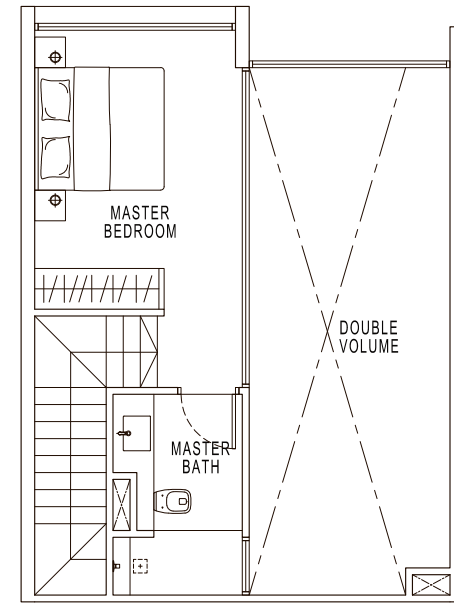
# ATELIER LOFT

## TYPE LF1

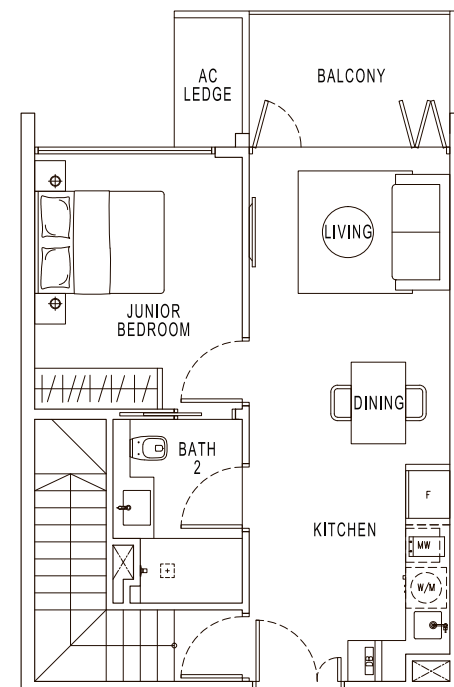
Area 108 sqm / 1163 sqft

#02-01 to #02-02  
#02-07 to #02-08  
#02-12 to #02-15

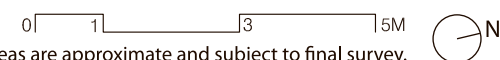
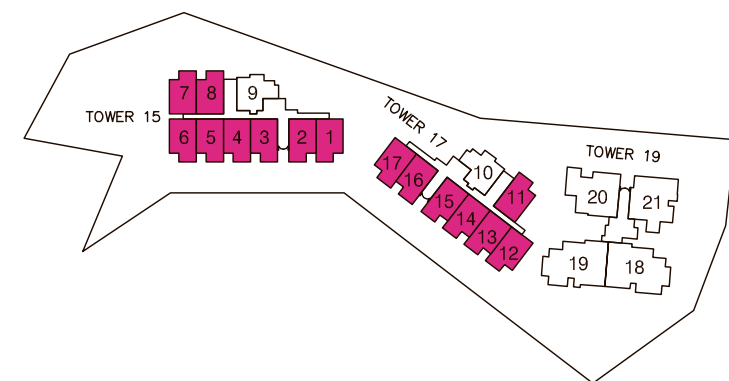
(Mirrored)  
#02-03 to #02-06  
#02-11, #02-16 to #02-17



UPPER LEVEL



LOWER LEVEL



Plans are not drawn to scale and are subject to amendments as may be required or approved by the relevant authorities. All floor areas are approximate and subject to final survey.

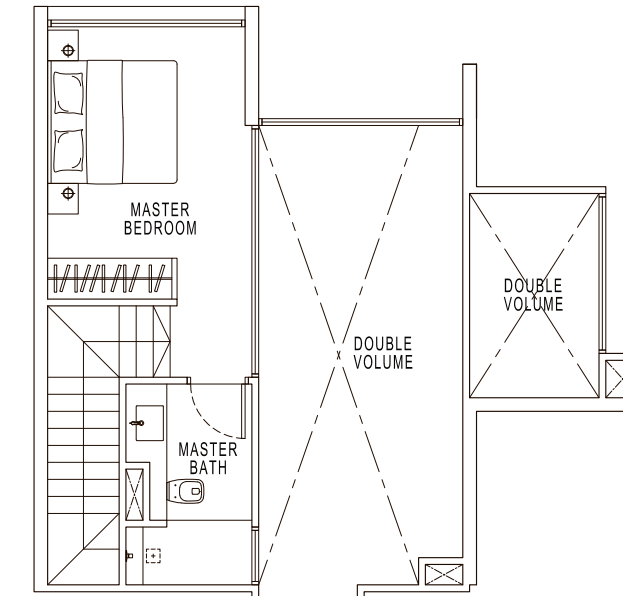
# ATELIER LOFT

## TYPE LF2

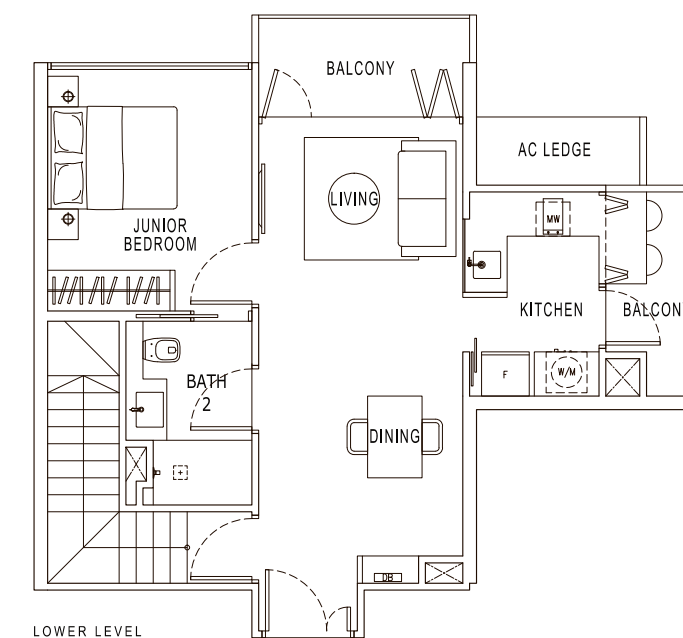
Area 118 sqm / 1270 sqft

#02-09

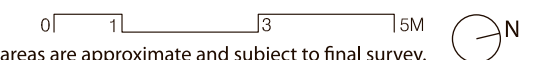
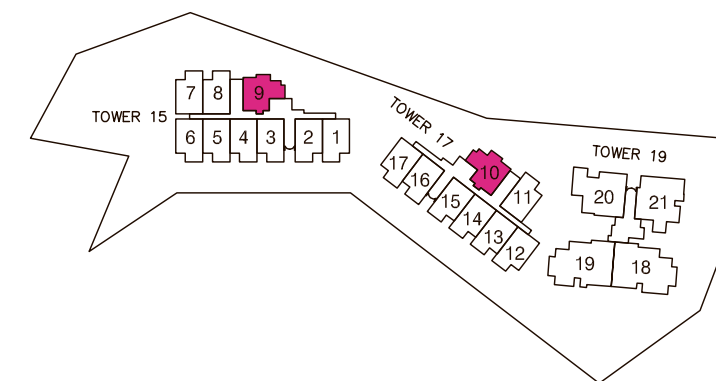
(Mirrored)  
#02-10



UPPER LEVEL



LOWER LEVEL



Plans are not drawn to scale and are subject to amendments as may be required or approved by the relevant authorities. All floor areas are approximate and subject to final survey.

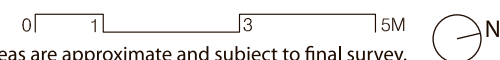
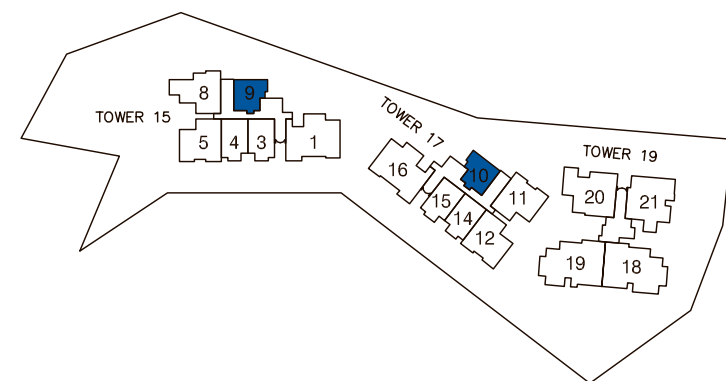
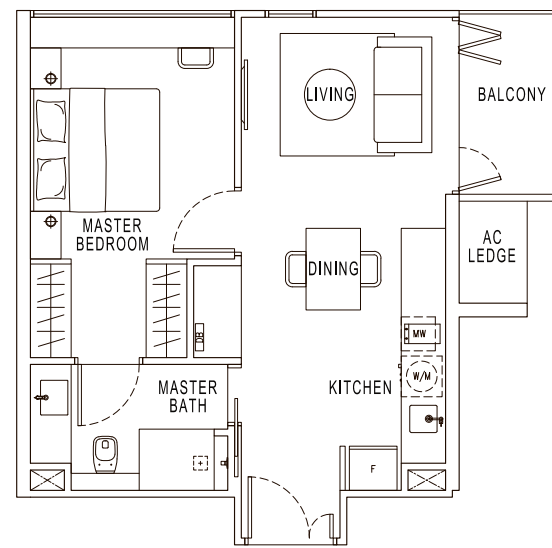
# 1-BEDROOM

## TYPE A1

Area 51 sqm / 549 sqft

#05-09 to #08-09

(Mirrored)  
#05-10 to #08-10



Plans are not drawn to scale and are subject to amendments as may be required or approved by the relevant authorities. All floor areas are approximate and subject to final survey.

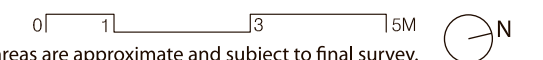
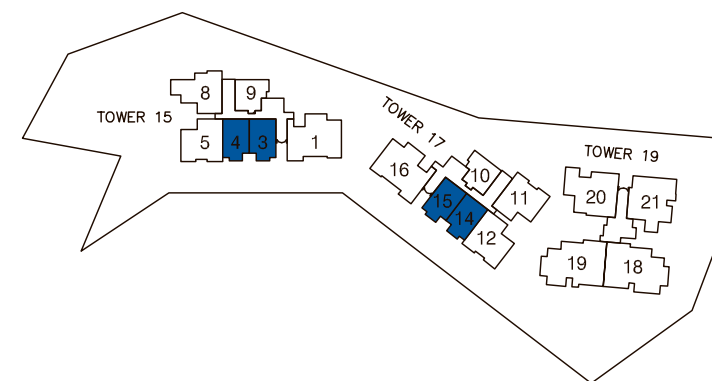
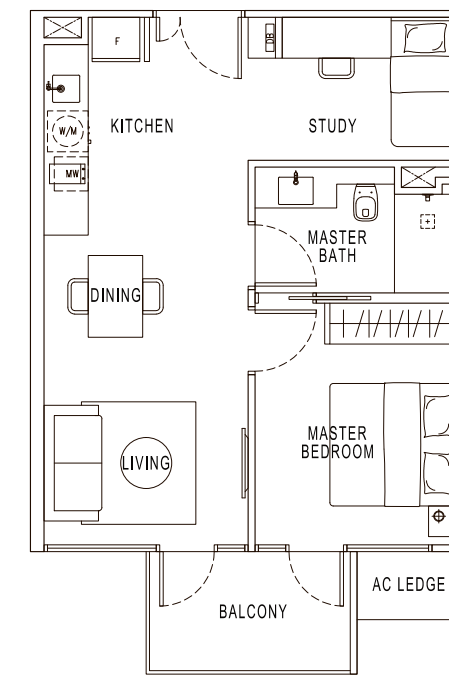
# 1-BEDROOM + STUDY

## TYPE A2

Area 56 sqm / 603 sqft

#05-03 to #07-03  
#05-14 to #07-14

(Mirrored)  
#05-04 to #07-04  
#05-15 to #07-15



Plans are not drawn to scale and are subject to amendments as may be required or approved by the relevant authorities. All floor areas are approximate and subject to final survey.



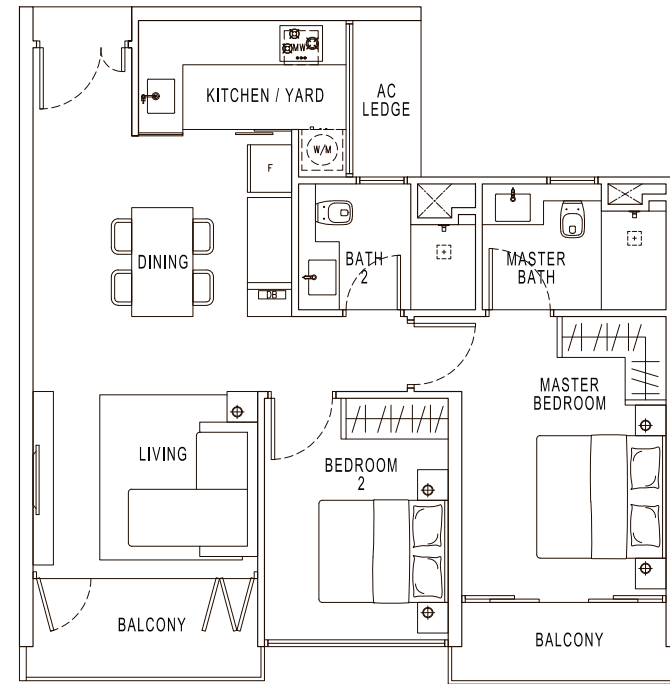
# 2-BEDROOM

## TYPE B1

Area 81 sqm / 872 sqft

#05-12 to #07-12

(Mirrored)  
#05-05 to #07-05  
#05-11 to #08-11

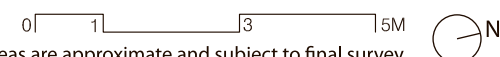
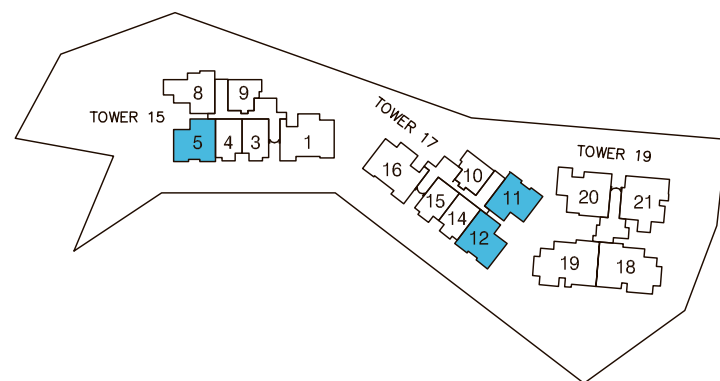
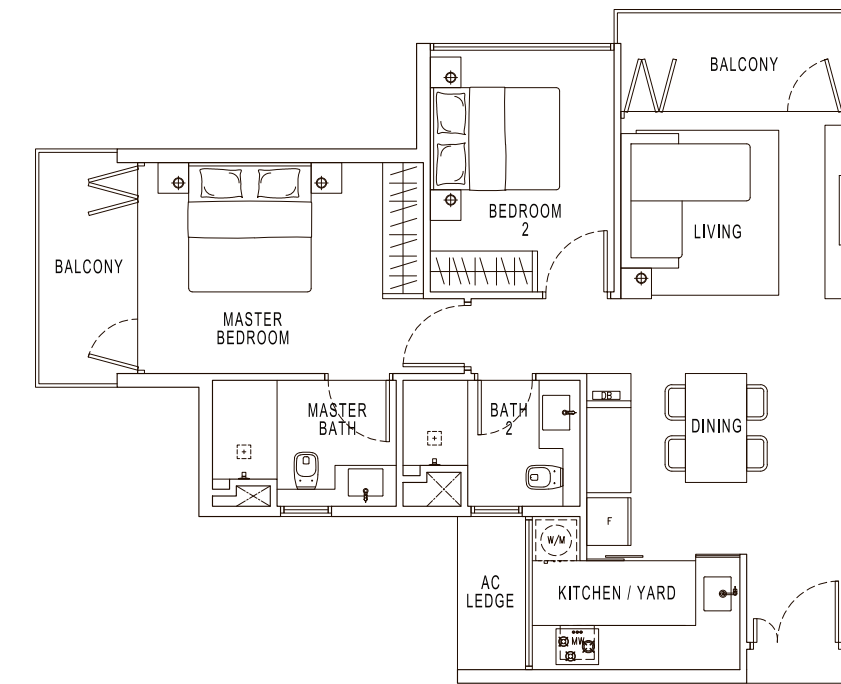


# 2-BEDROOM

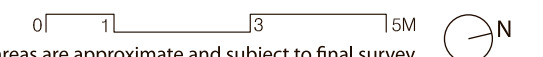
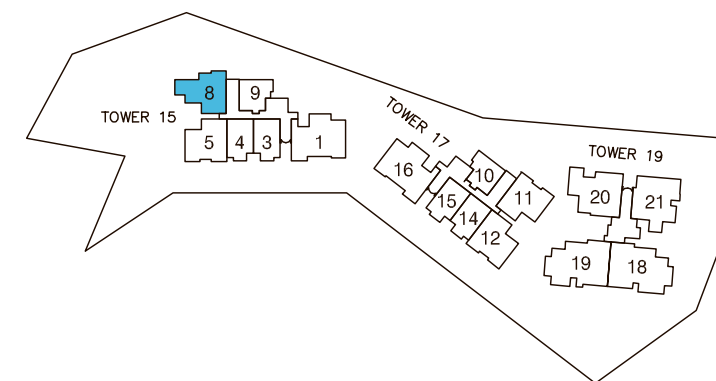
## TYPE B2

Area 83 sqm / 893 sqft

#05-08 to #08-08



Plans are not drawn to scale and are subject to amendments as may be required or approved by the relevant authorities. All floor areas are approximate and subject to final survey.



Plans are not drawn to scale and are subject to amendments as may be required or approved by the relevant authorities. All floor areas are approximate and subject to final survey.

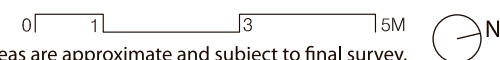
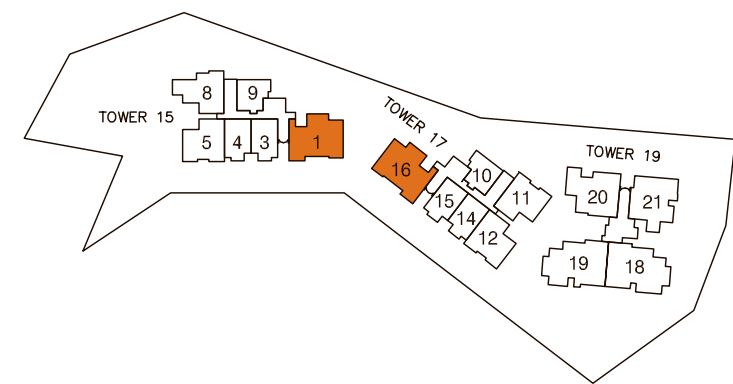
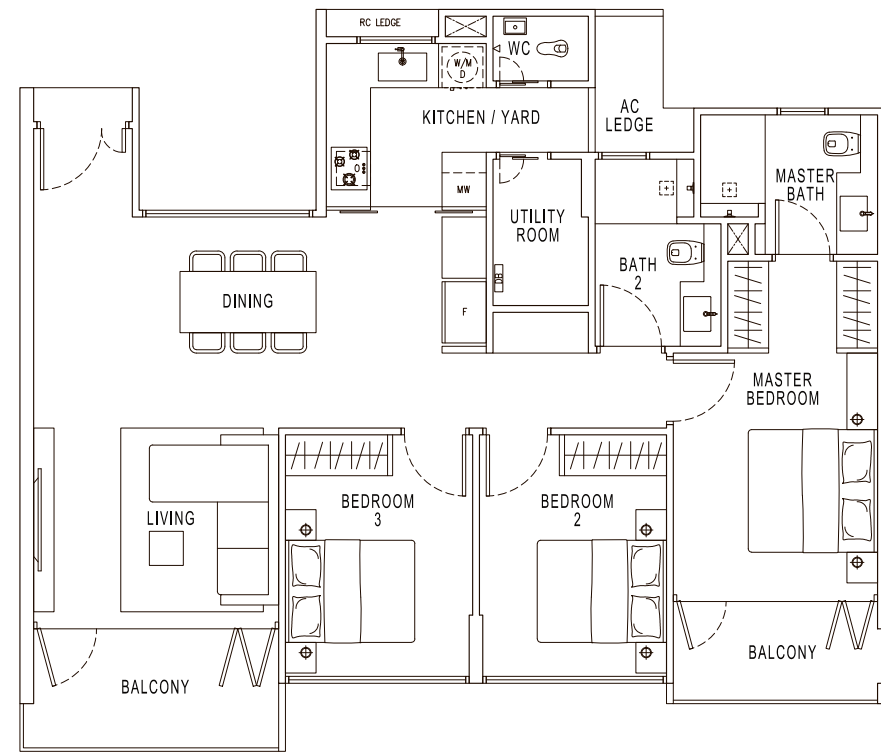
# 3-BEDROOM

## TYPE C1 (b)

Area 112 sqm / 1206 sqft

#05-01 to #07-01

(Mirrored)  
#05-16 to #07-16



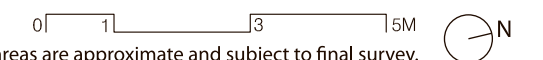
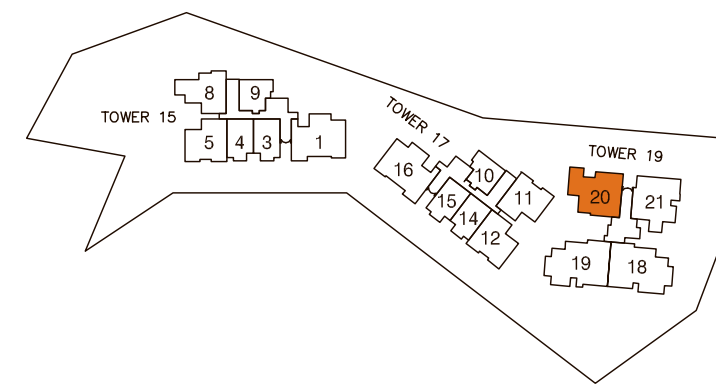
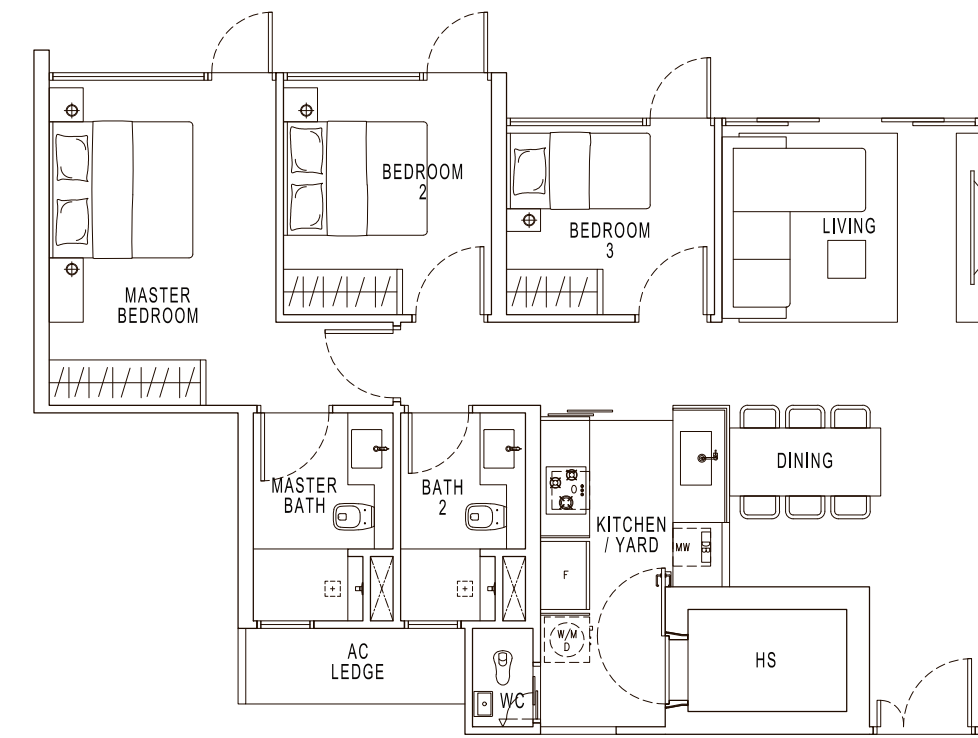
Plans are not drawn to scale and are subject to amendments as may be required or approved by the relevant authorities. All floor areas are approximate and subject to final survey.

# 3-BEDROOM

## TYPE C2 (p)

Area 91 sqm / 980 sqft

#01-20



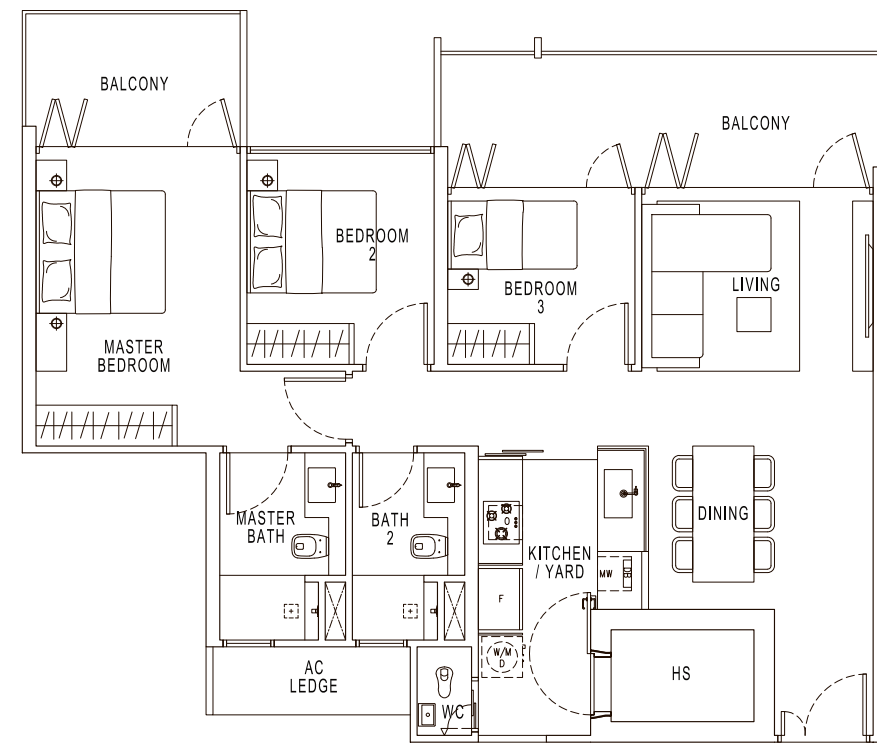
Plans are not drawn to scale and are subject to amendments as may be required or approved by the relevant authorities. All floor areas are approximate and subject to final survey.

# 3-BEDROOM

## TYPE C2 (b1)

Area 110 sqm / 1184 sqft

#03-20, #05-20, #07-20

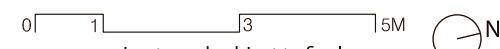
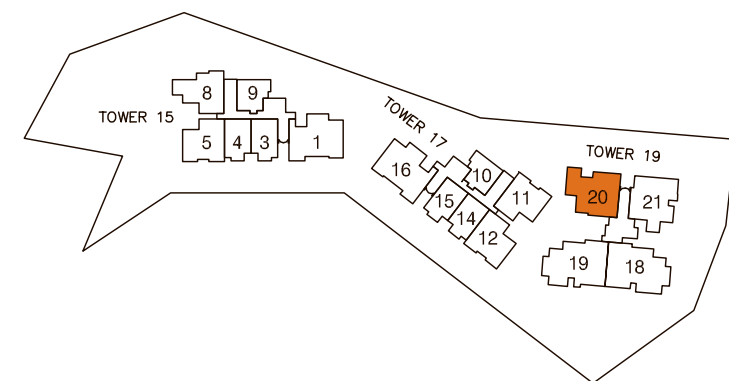
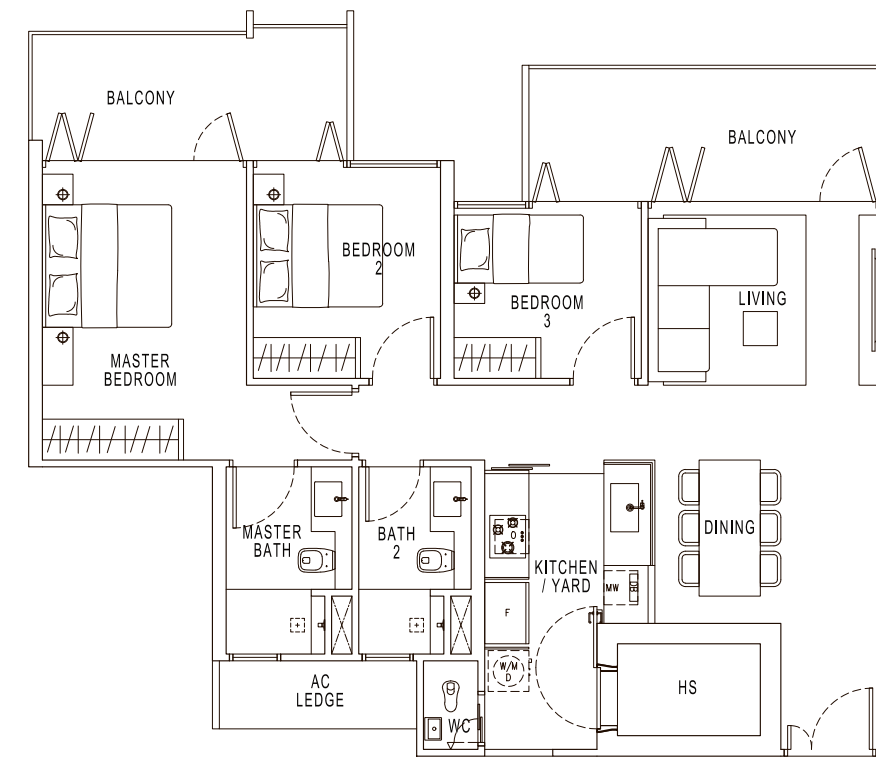


# 3-BEDROOM

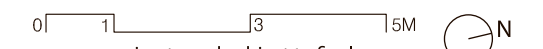
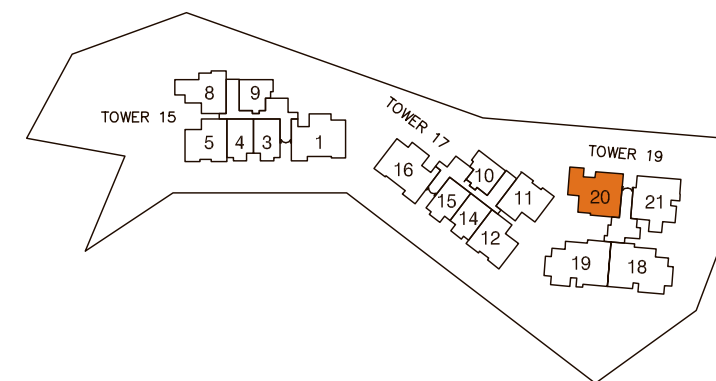
## TYPE C2 (b2)

Area 110 sqm / 1184 sqft

#02-20, #06-20



Plans are not drawn to scale and are subject to amendments as may be required or approved by the relevant authorities. All floor areas are approximate and subject to final survey.



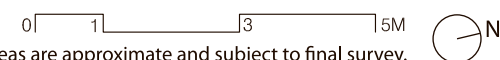
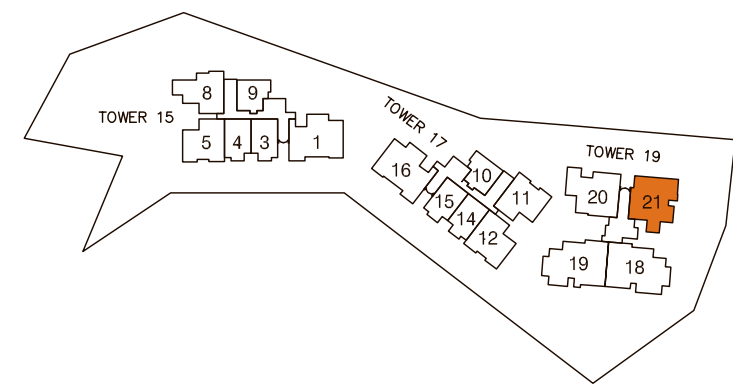
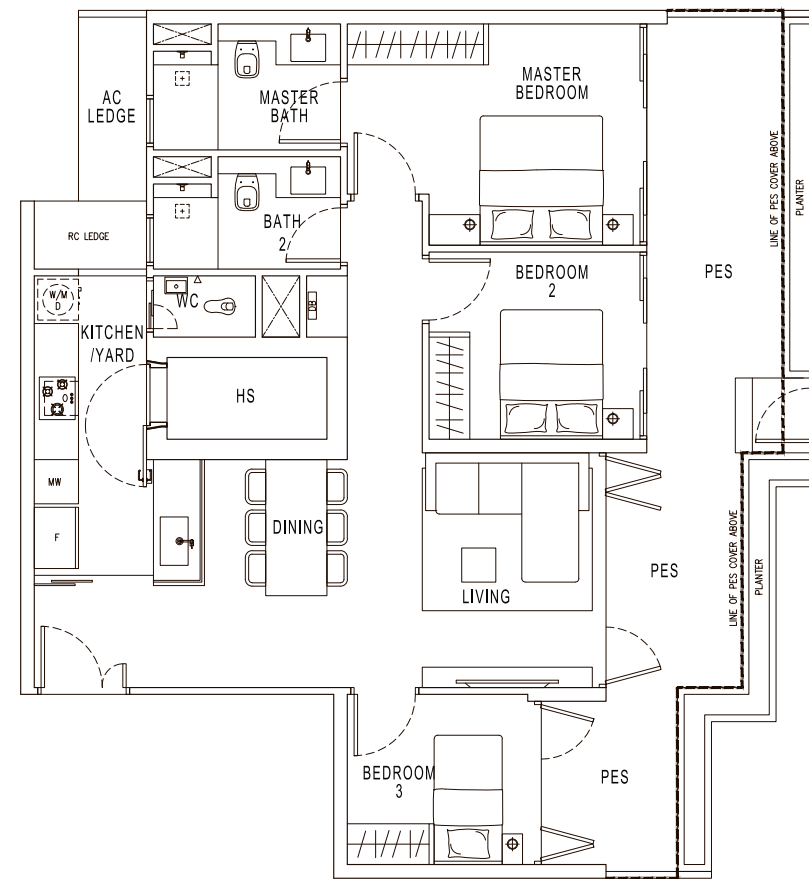
Plans are not drawn to scale and are subject to amendments as may be required or approved by the relevant authorities. All floor areas are approximate and subject to final survey.

# 3-BEDROOM

TYPE C3 (p)

Area 122 sqm / 1313 sqft

#01-21



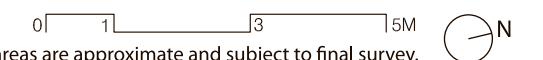
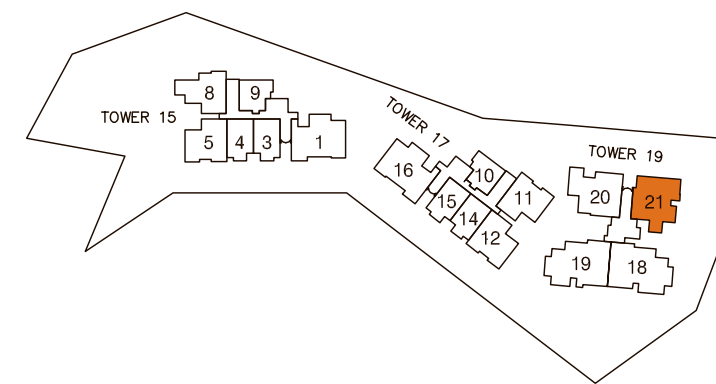
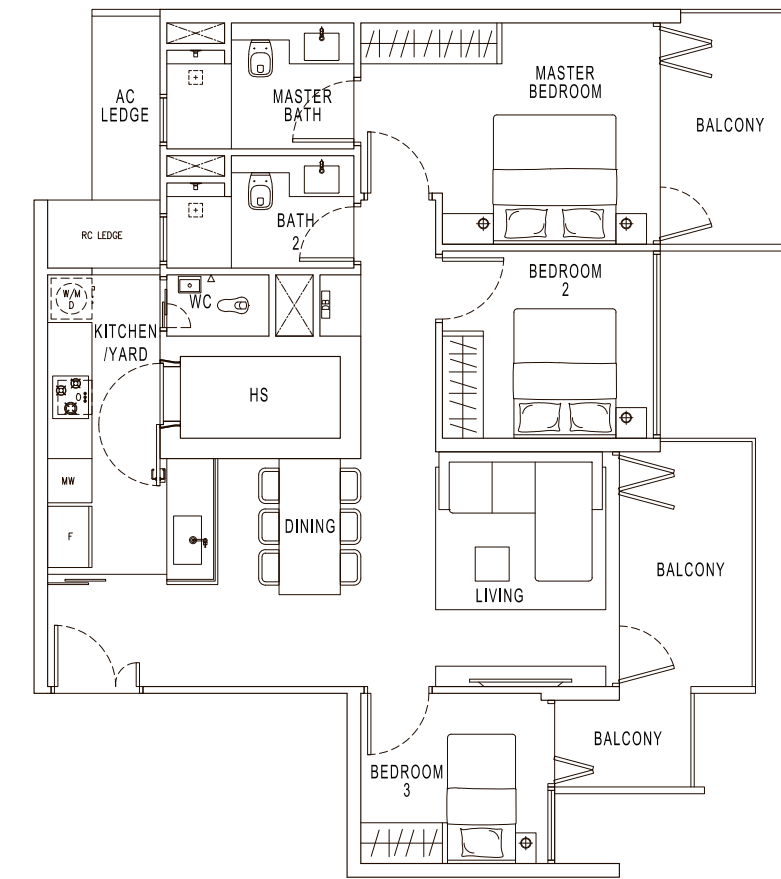
Plans are not drawn to scale and are subject to amendments as may be required or approved by the relevant authorities. All floor areas are approximate and subject to final survey.

# 3-BEDROOM

TYPE C3 (b1)

Area 106 sqm / 1141 sqft

#02-21, #06-21



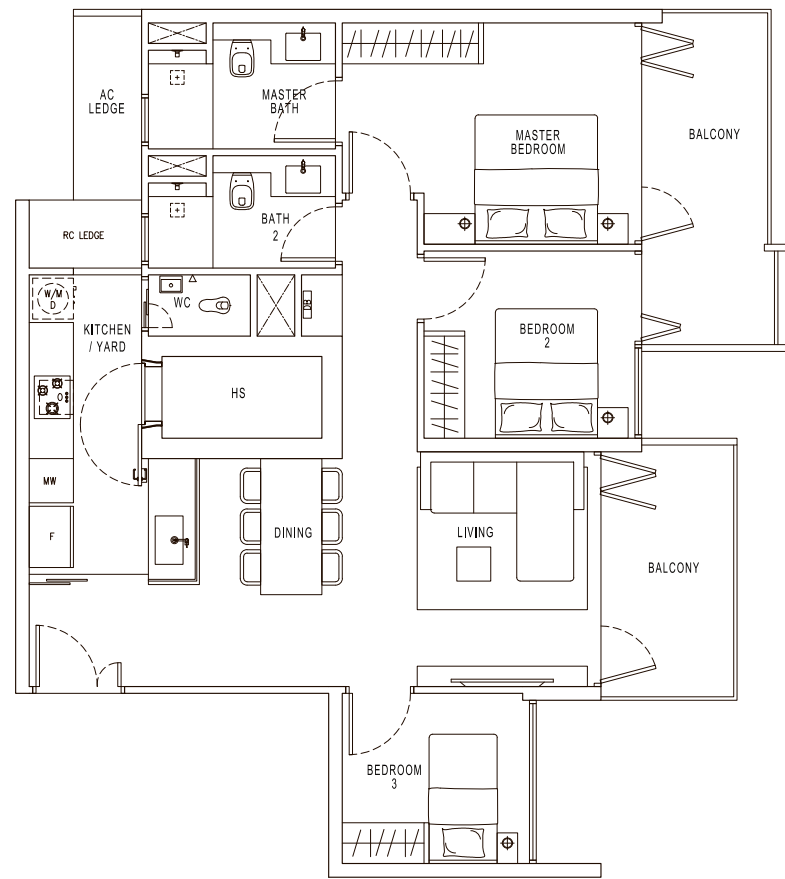
Plans are not drawn to scale and are subject to amendments as may be required or approved by the relevant authorities. All floor areas are approximate and subject to final survey.

# 3-BEDROOM

TYPE C3 (b2)

Area 106 sqm / 1141 sqft

#03-21, #05-21, #07-21



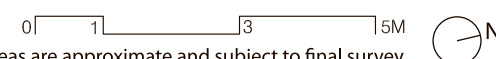
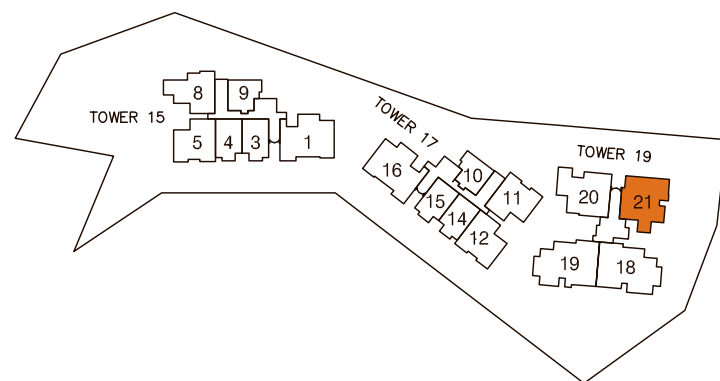
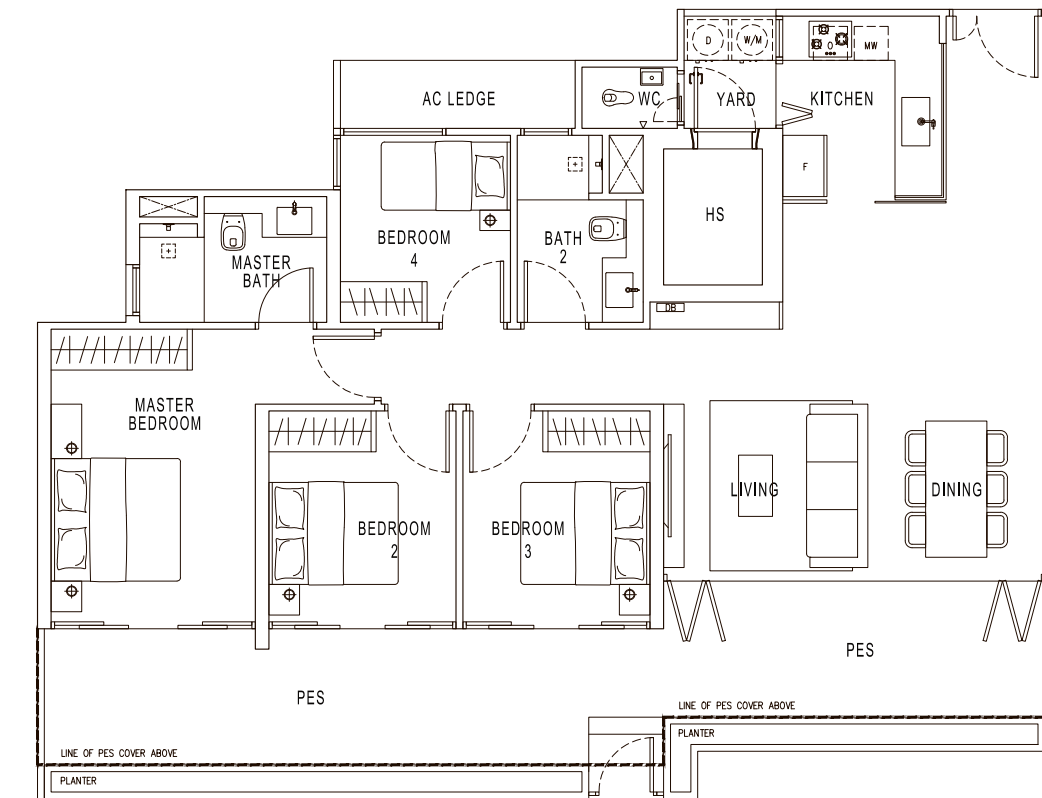
# 4-BEDROOM

TYPE D (p)

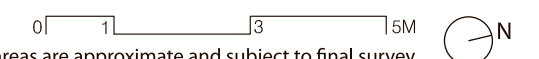
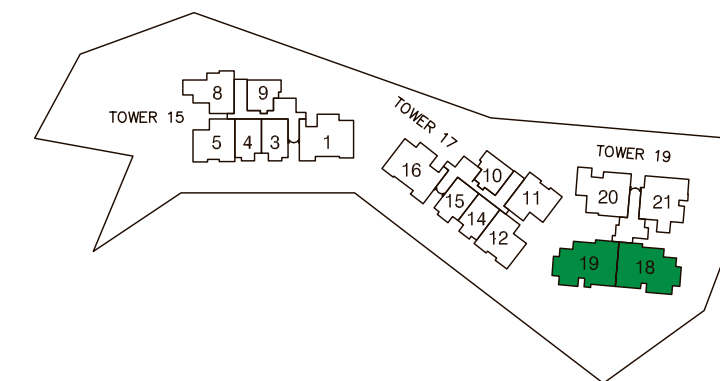
Area 148 sqm / 1593 sqft

#01-19

(Mirrored)  
#01-18



Plans are not drawn to scale and are subject to amendments as may be required or approved by the relevant authorities. All floor areas are approximate and subject to final survey.



Plans are not drawn to scale and are subject to amendments as may be required or approved by the relevant authorities. All floor areas are approximate and subject to final survey.

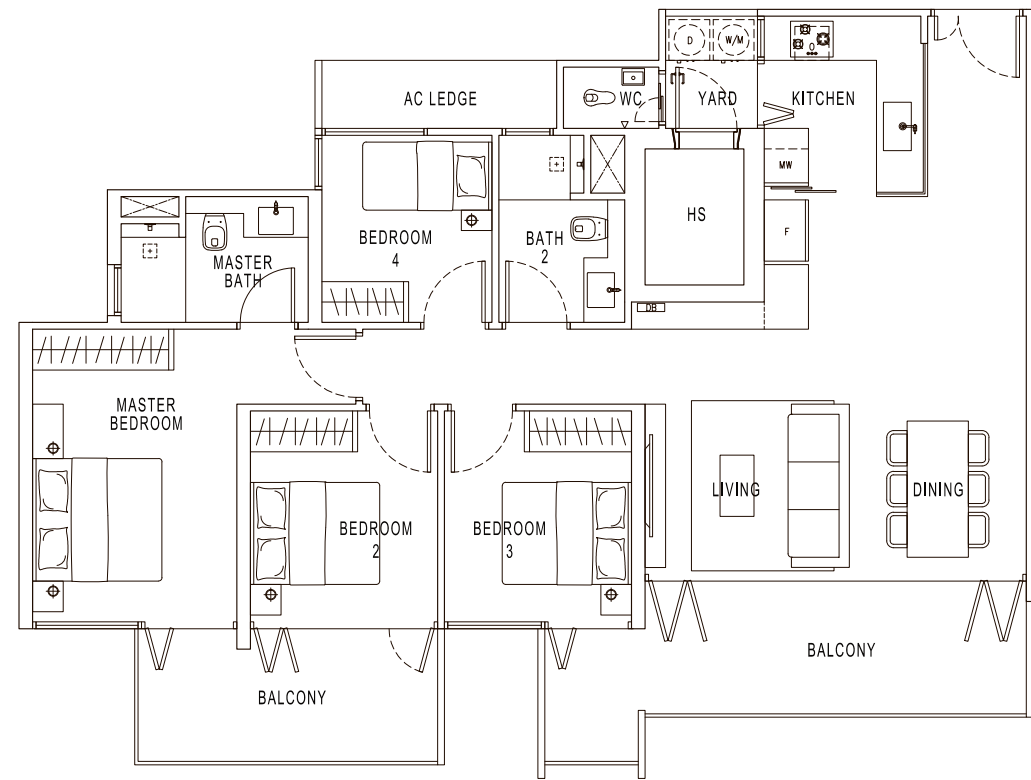
# 4-BEDROOM

## TYPE D (b1)

Area 134 sqm / 1442 sqft

#03-19, #05-19, #07-19

(Mirrored)  
#02-18, #06-18



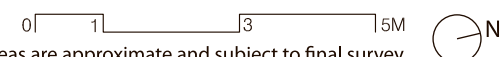
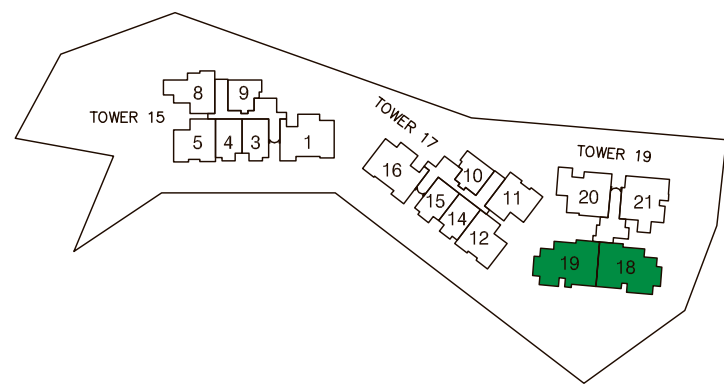
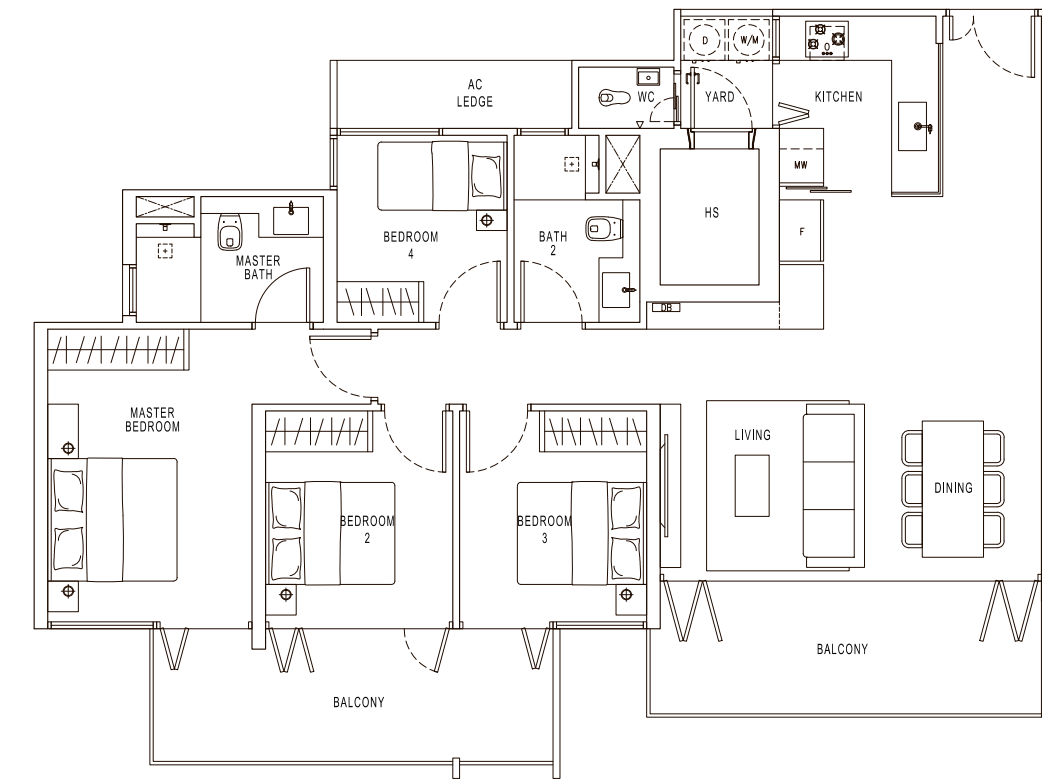
# 4-BEDROOM

## TYPE D (b2)

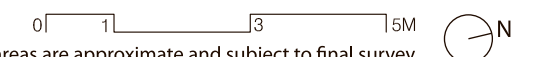
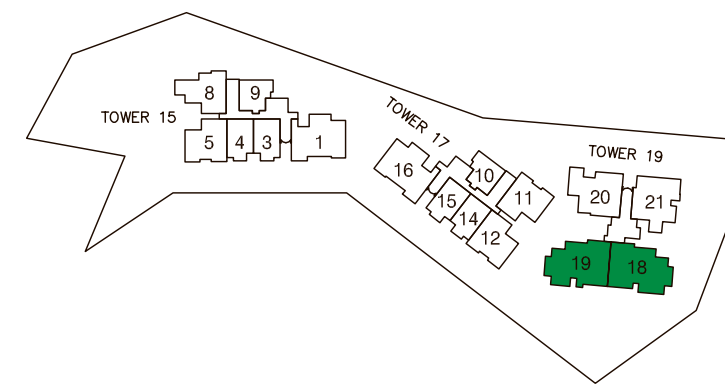
Area 133 sqm / 1432 sqft

#02-19, #06-19

(Mirrored)  
#03-18, #05-18, #07-18



Plans are not drawn to scale and are subject to amendments as may be required or approved by the relevant authorities. All floor areas are approximate and subject to final survey.



Plans are not drawn to scale and are subject to amendments as may be required or approved by the relevant authorities. All floor areas are approximate and subject to final survey.

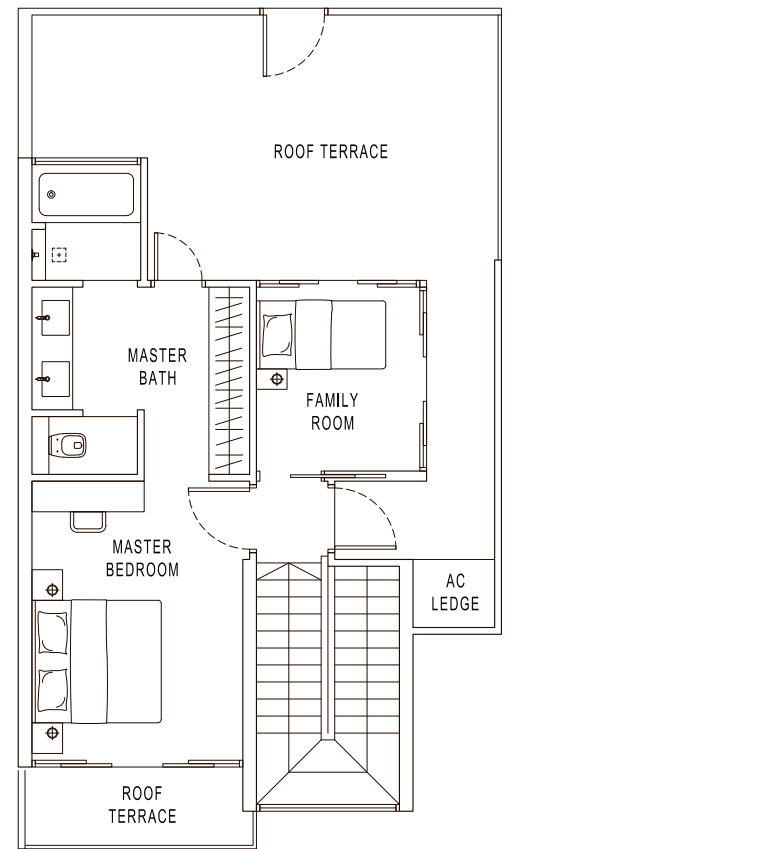
# PENTHOUSE

## TYPE PH1

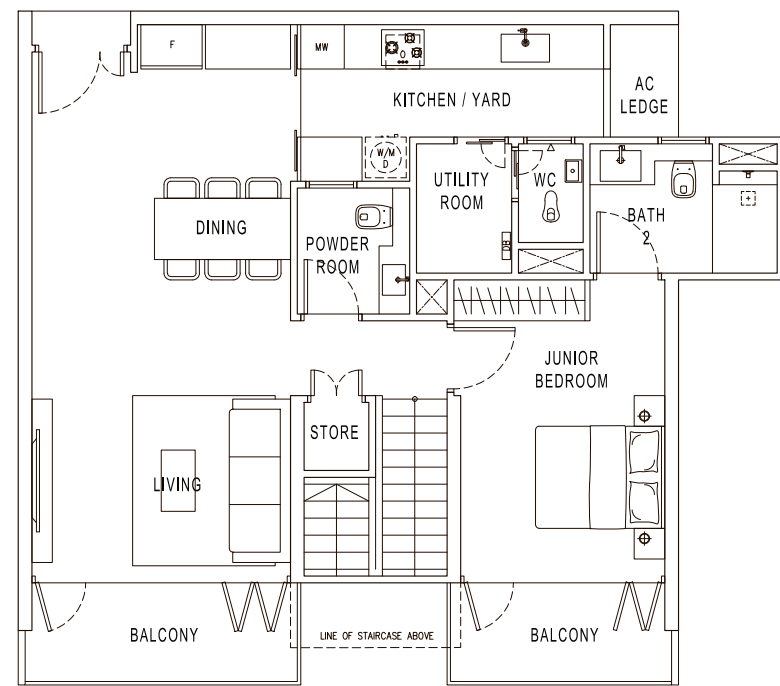
Area 171 sqm / 1841 sqft

#08-12

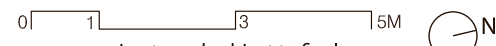
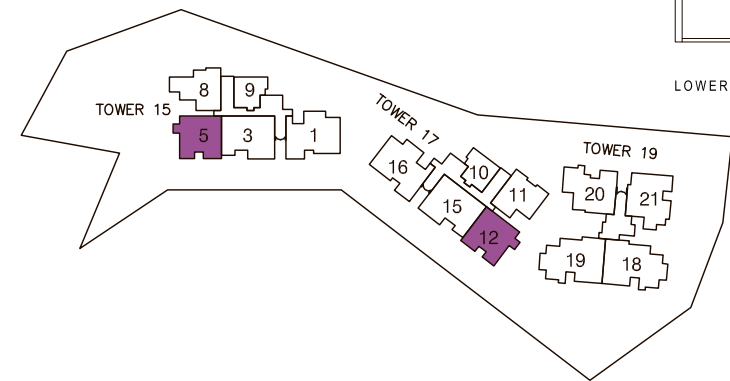
(Mirrored)  
#08-05



UPPER LEVEL



LOWER LEVEL



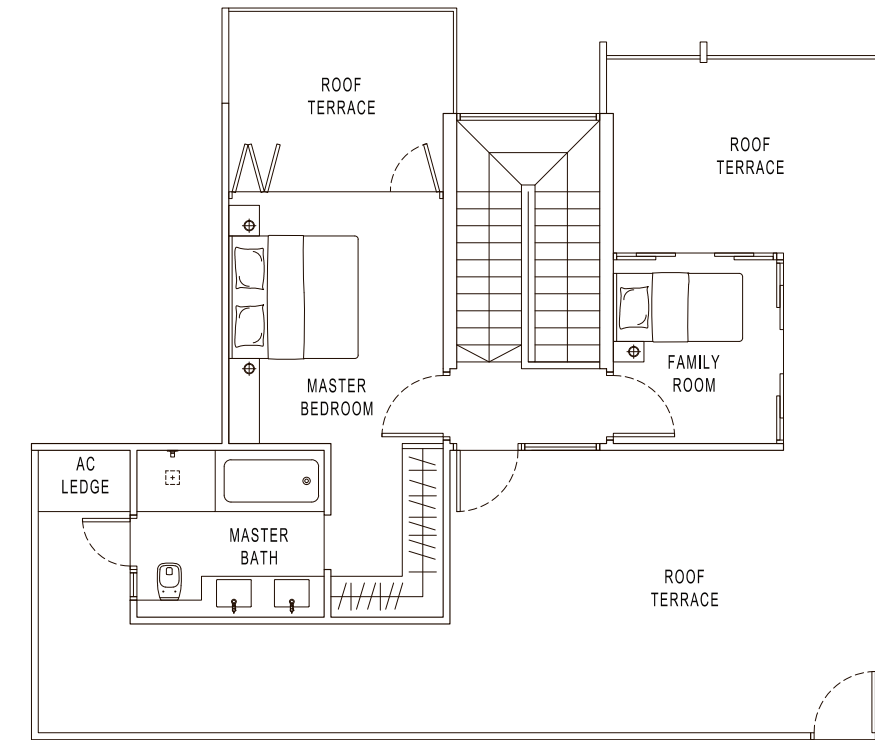
Plans are not drawn to scale and are subject to amendments as may be required or approved by the relevant authorities. All floor areas are approximate and subject to final survey.

# PENTHOUSE

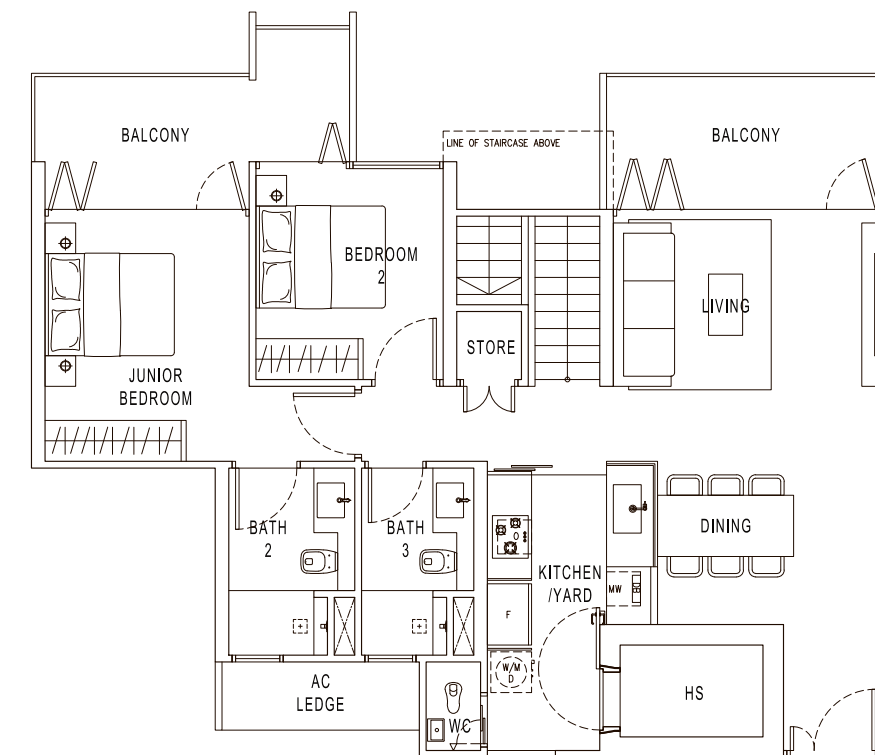
## TYPE PH2

Area 214 sqm / 2303 sqft

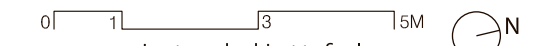
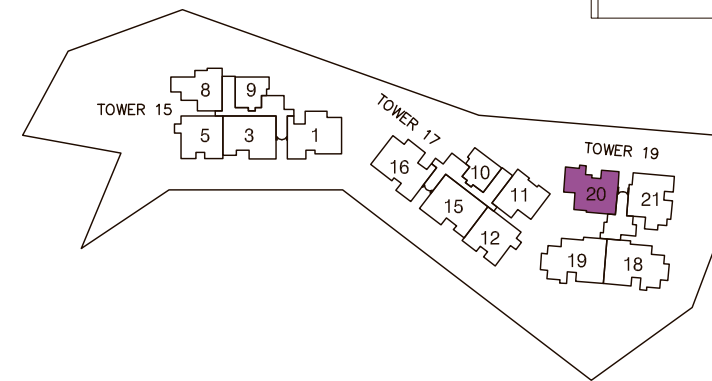
#08-20



UPPER LEVEL



LOWER LEVEL



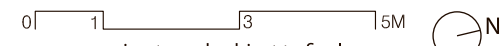
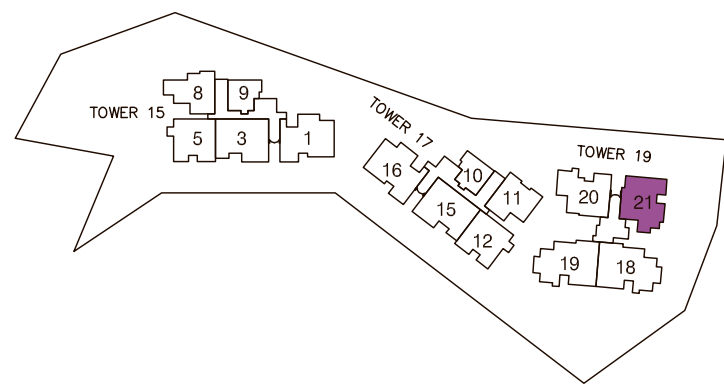
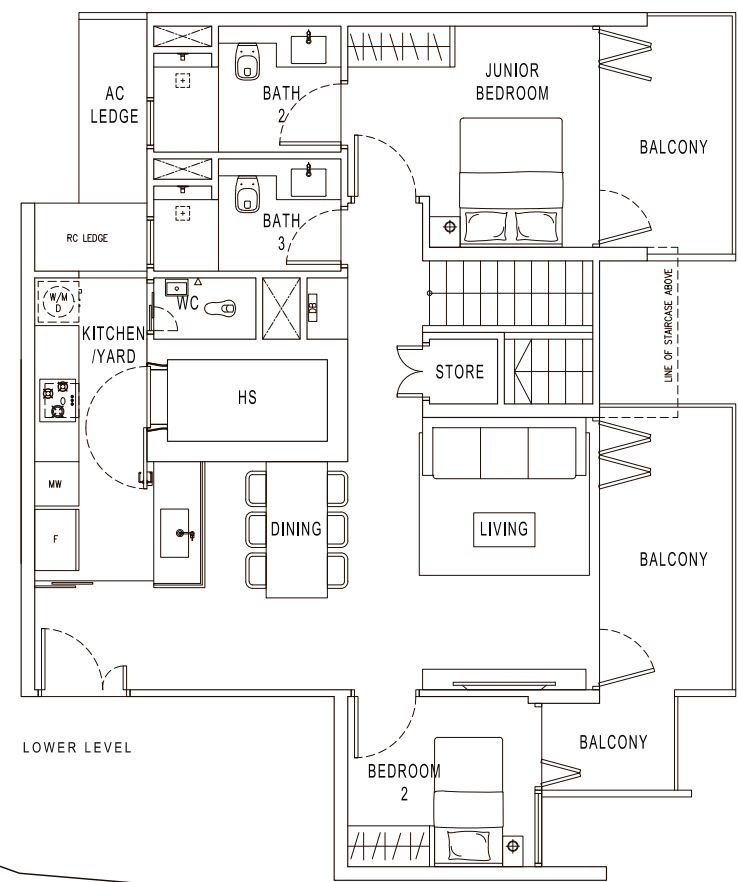
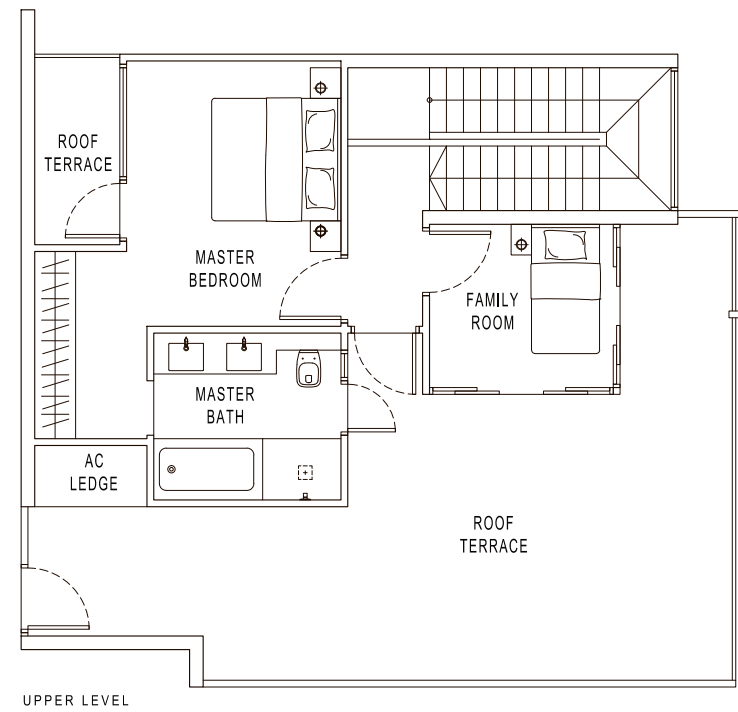
Plans are not drawn to scale and are subject to amendments as may be required or approved by the relevant authorities. All floor areas are approximate and subject to final survey.

# PENTHOUSE

## TYPE PH3

Area 195 sqm / 2099 sqft

#08-21



Plans are not drawn to scale and are subject to amendments as may be required or approved by the relevant authorities. All floor areas are approximate and subject to final survey.

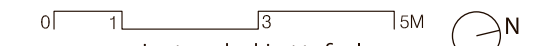
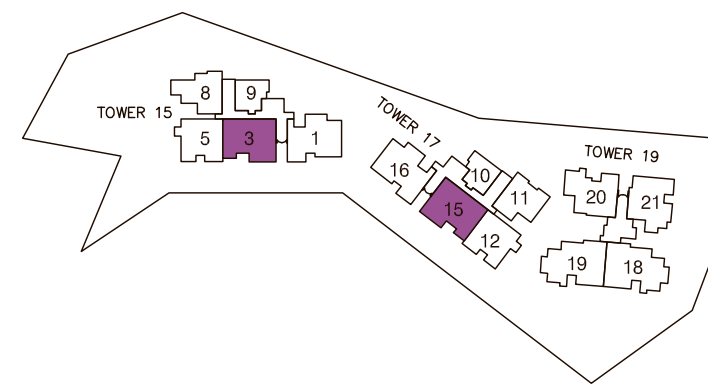
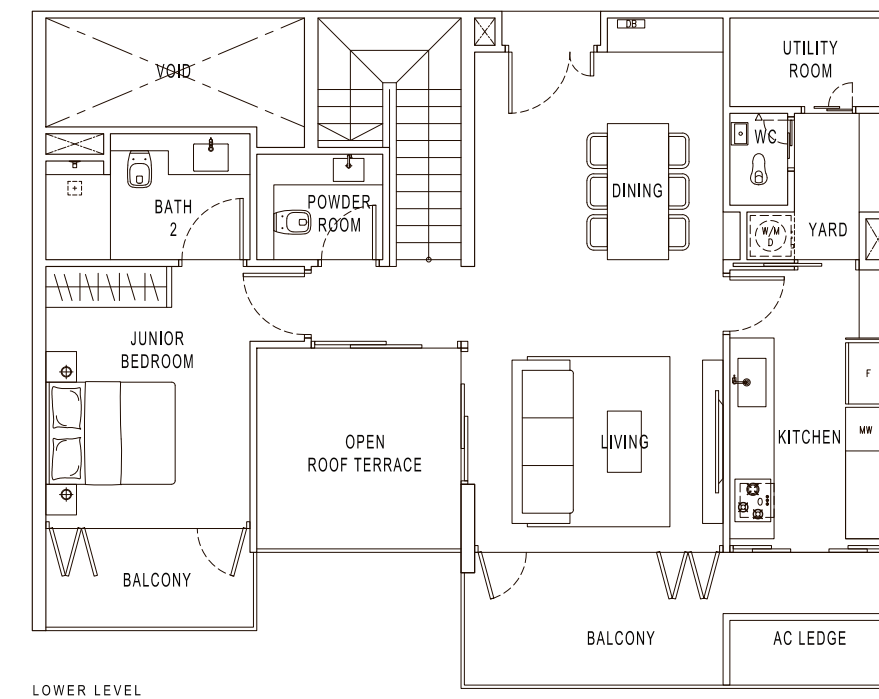
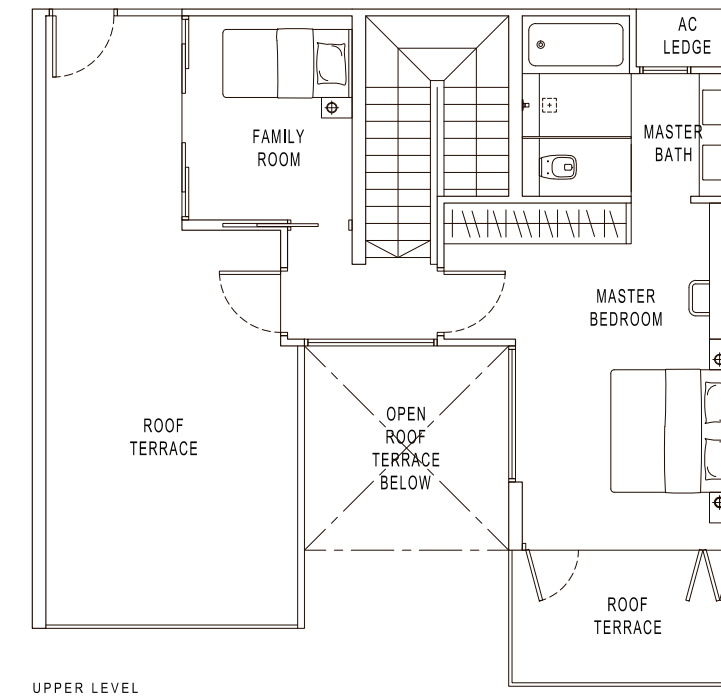
# PENTHOUSE

## TYPE PH4

Area 190 sqm / 2045 sqft

#08-03

(Mirrored)  
#08-15



Plans are not drawn to scale and are subject to amendments as may be required or approved by the relevant authorities. All floor areas are approximate and subject to final survey.



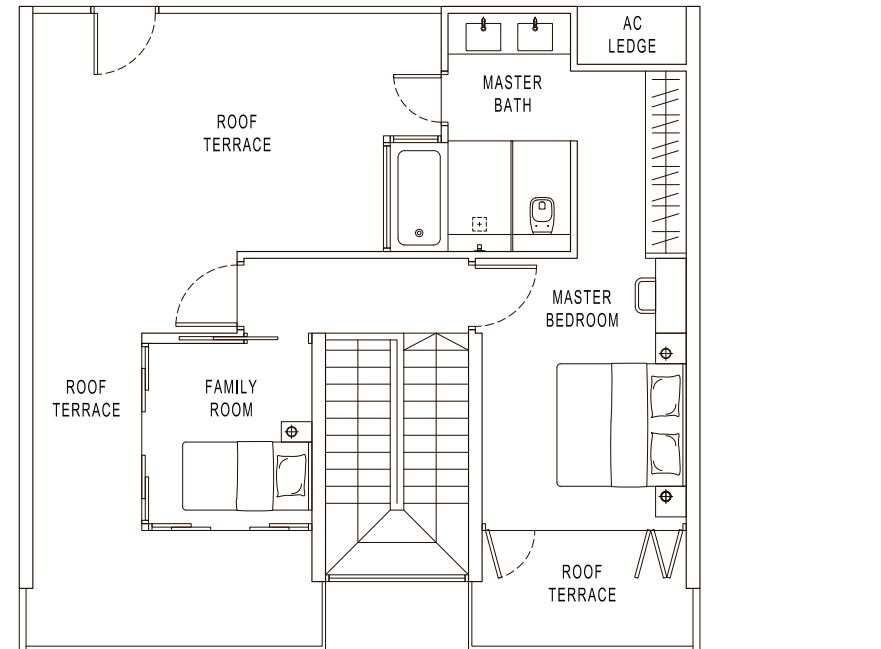
# PENTHOUSE

## TYPE PH5

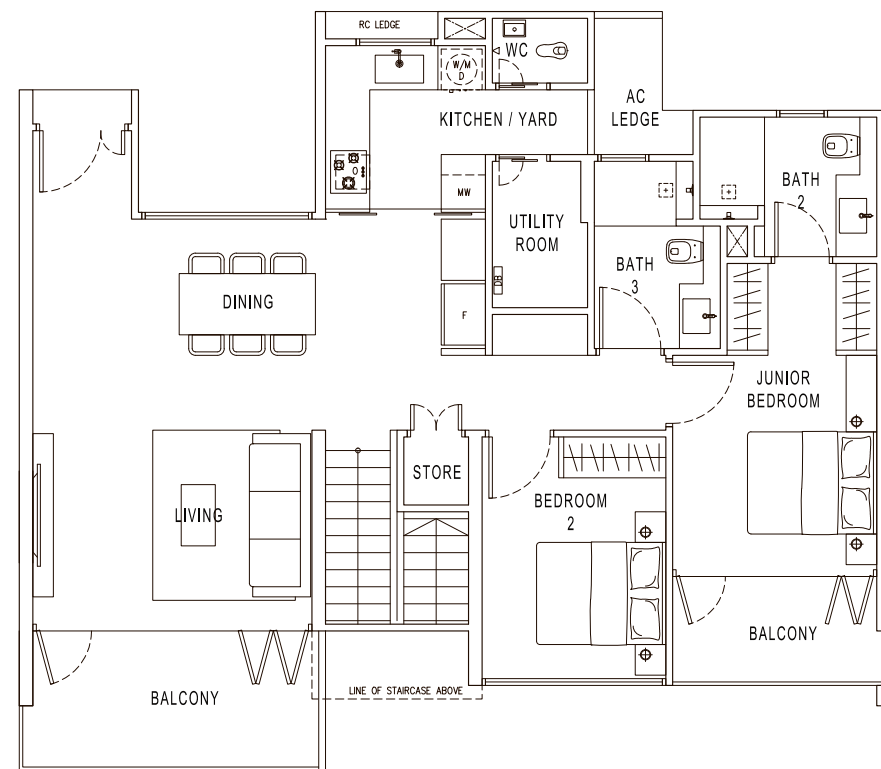
Area 200 sqm / 2153 sqft

#08-01

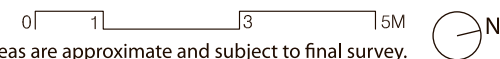
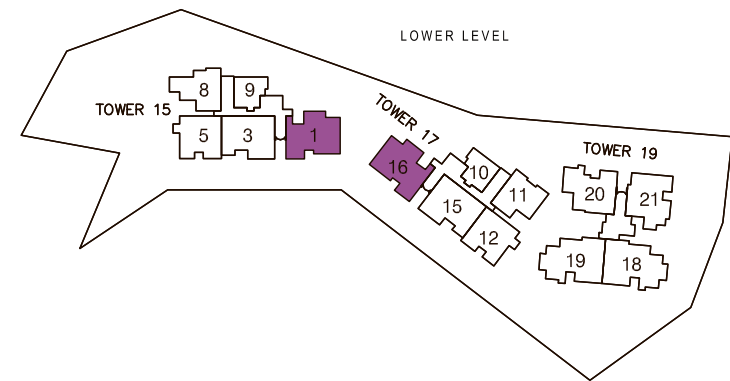
(Mirrored)  
#08-16



UPPER LEVEL



LOWER LEVEL



Plans are not drawn to scale and are subject to amendments as may be required or approved by the relevant authorities. All floor areas are approximate and subject to final survey.

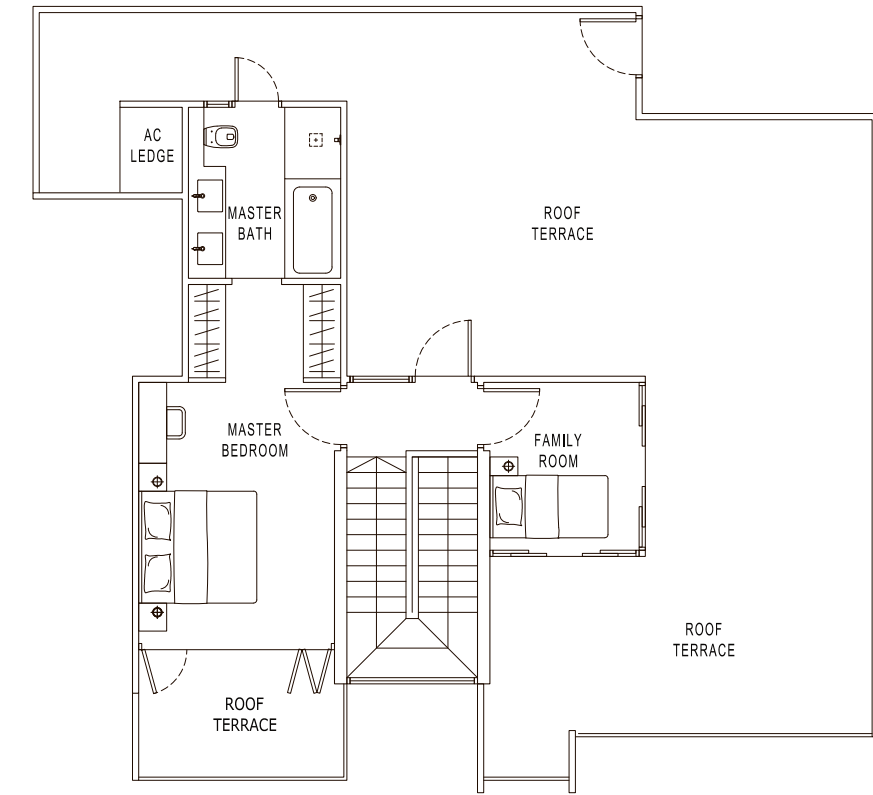
# PENTHOUSE

## TYPE PH6

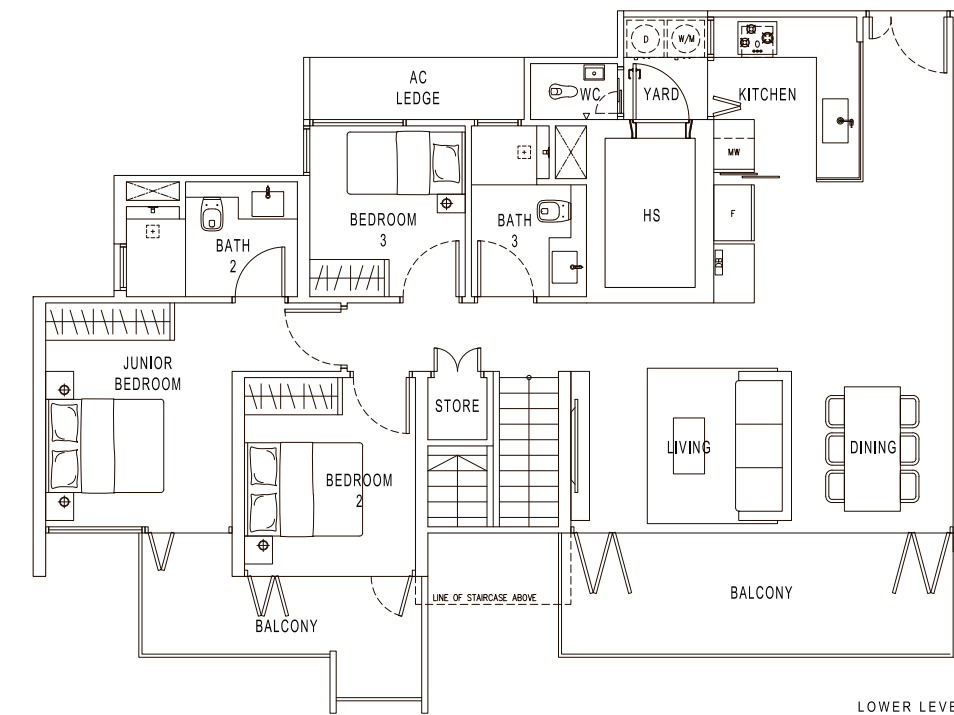
Area 263 sqm / 2831 sqft

#08-19

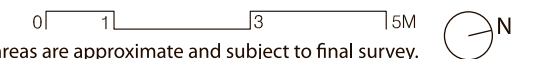
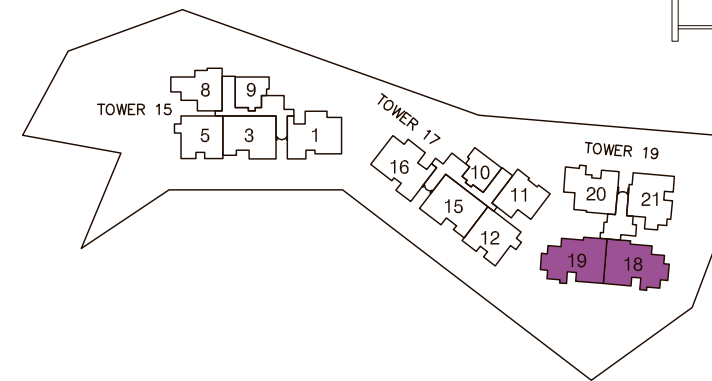
(Mirrored)  
#08-18



UPPER LEVEL



LOWER LEVEL



Plans are not drawn to scale and are subject to amendments as may be required or approved by the relevant authorities. All floor areas are approximate and subject to final survey.

